

Saving Bookmarks in Safari



TO SAVE YOUR BOOKMARKS

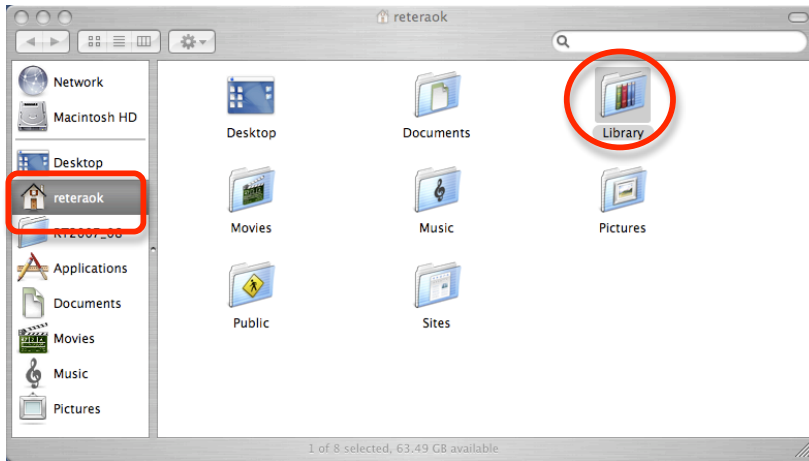
Be sure that Safari is closed and not running.

Click on the FINDER icon in your dock.



On the left side of the FINDER menu, select your user folder (labeled with your KS user name).

On the right side, click on LIBRARY.



Locate SAFARI in the list.

While pressing the OPTION key, click and drag the SAFARI folder to your desktop. You should see a green + sign appear and a copy of the folder should be made to your desktop.

Save the folder to your external device (i.e. jump drive or external hard drive).

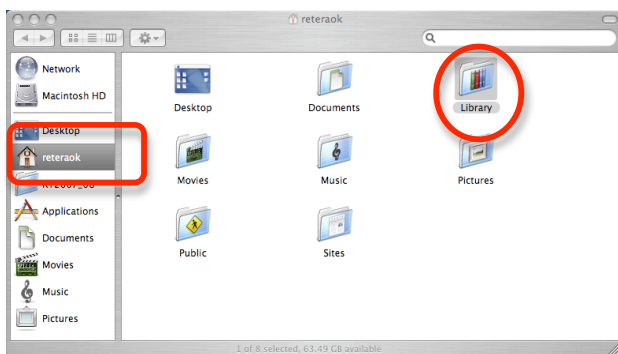
TO TRANSFER YOUR BOOKMARKS

Click on the FINDER icon in your dock.



On the left side of the FINDER menu, select your user folder (labeled with your KS user name).

On the right side, click on LIBRARY.



Drag the SAFARI folder from your device (i.e. jump drive or external hard drive) to the LIBRARY folder.