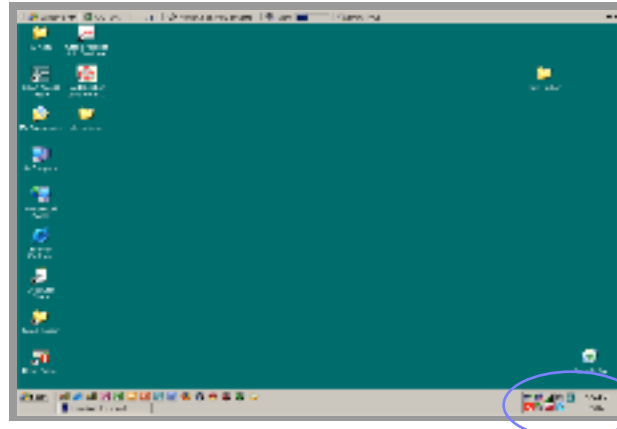


# Accessing a Wireless Network on Your PC

## Dell 620 and 630 Laptops

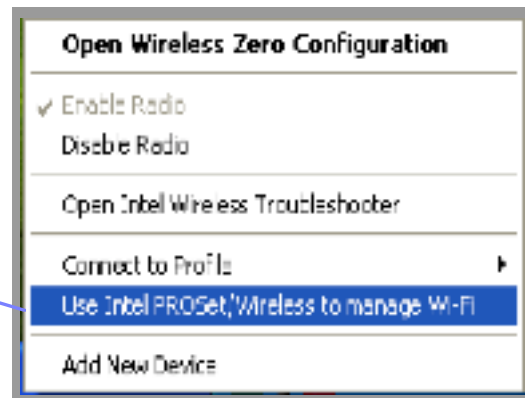
Instructions and Tips for Accessing the Wireless Network  
on Kapālama Campus or at Home



System Utility Tray

### KAPĀLAMA CAMPUS ACCESS

1. Right-click on the **Intel PRO wireless utility** icon (fan shape) in the system utility tray. A menu will appear.
2. From the pop-up menu, select **Use Intel PROSet/Wireless to manage Wi-Fi**.

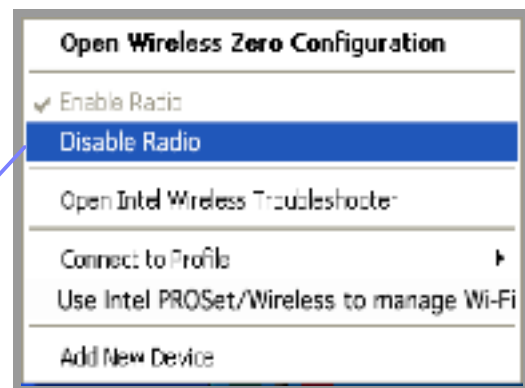


\*\*\* For faster access, we recommend that you plug into the network using a network cable to access Class XP.



When you do this, **ALWAYS DISABLE** the **RADIO SETTING** when connecting to the network. Right-click on the **Intel Pro wireless utility** icon in the system utility tray. A menu will appear.

From the pop-up menu, select **Disable Radio**.



## HOME ACCESS

(These instructions are for those who have a wireless network setup at home.)

1. Right-click on the **Intel PRO wireless utility** icon (fan shape) in the system utility tray. A menu will appear.

2. From the pop-up menu, select **Use Windows to manage Wi-Fi**.

This will allow the Windows wireless utility to control the laptop's wireless card and connect to your home wireless network.



3. Check that your **RADIO SETTING is ENABLED**. Right-click on the **Intel PRO wireless utility** icon in the system utility tray. A menu will appear.

From the pop-up menu, select **Enable Radio**.

