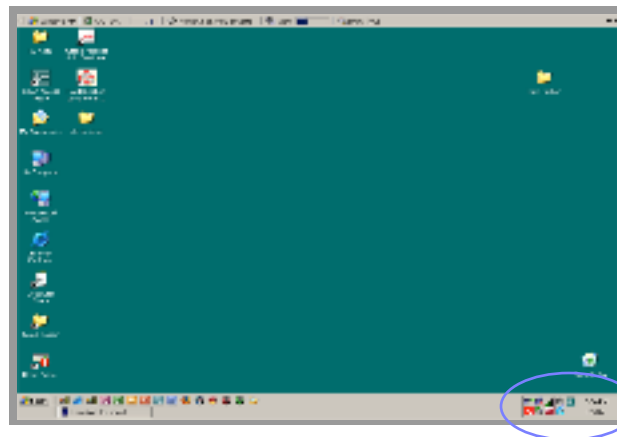


Accessing a Wireless Network on Your PC

Dell 600 and 610 Laptops

Instructions and Tips for Accessing the Wireless Network on Kapālama Campus or at Home

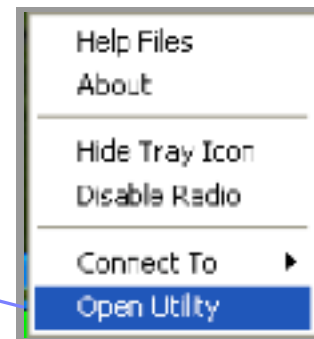


System Utility Tray

KAPĀLAMA CAMPUS ACCESS

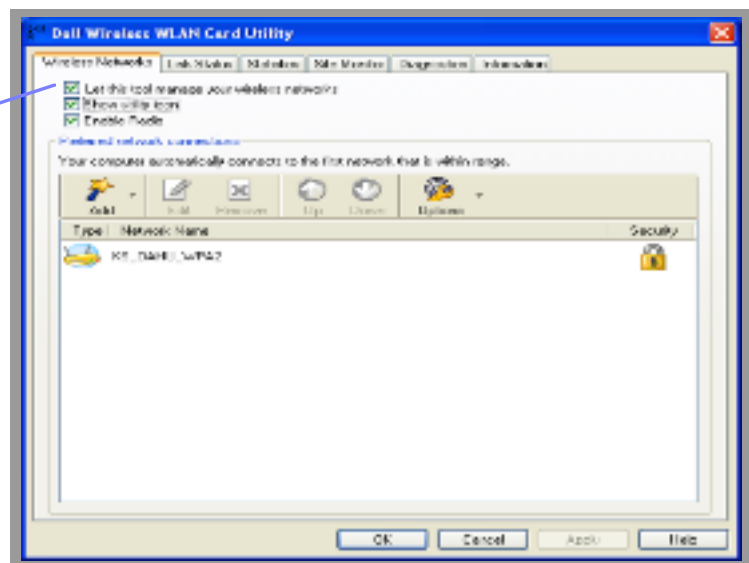
1. Right-click on the **True Mobile wireless utility** icon (stairs or bars) in the system utility tray. A menu will appear.

2. From the pop-up menu, select **Open Utility**.



3. The Dell Wireless WLAN Card Utility window will open.

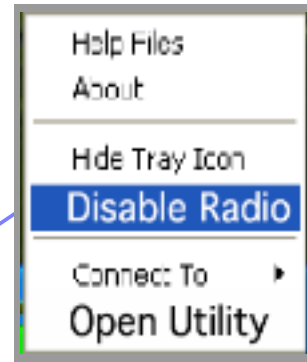
Check the first option (Let this tool manage your wireless networks).



*** For faster access, we recommend that you plug into the network using a network cable to access Class XP.



When you do this, **ALWAYS DISABLE** the **RADIO SETTING** when connecting to the network. Right-click on the **True Mobile wireless utility** icon in the system utility tray. A menu will appear.

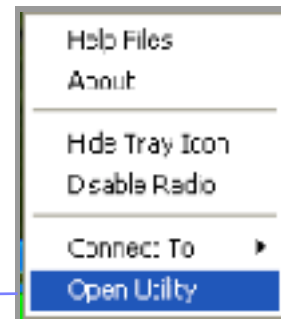


From the pop-up menu, select **Disable Radio**.

HOME ACCESS

(These instructions are for those who have a wireless network setup at home.)

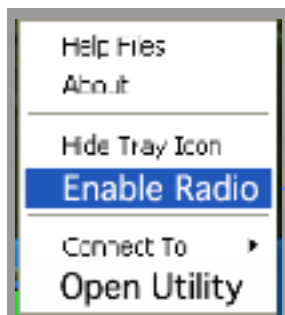
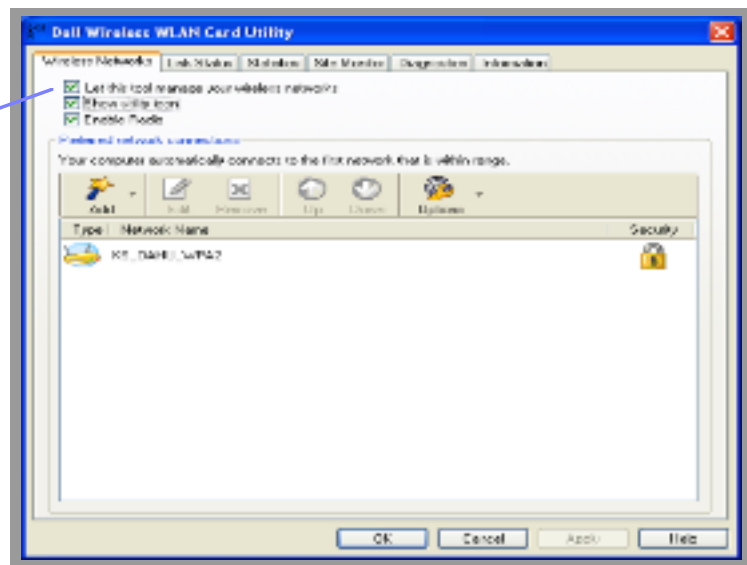
1. Right-click on the **True Mobile wireless utility** icon (stairs or bars) in the system utility tray. A menu will appear.
2. From the pop-up menu, select **Open Utility**.



3. The **Dell Wireless WLAN Card Utility** window will open.

Uncheck the first option (*Let this tool manage your wireless networks*).

This will allow the Windows wireless utility to control the laptop's wireless card and connect to your home wireless network.



4. Check that your **RADIO SETTING** is **ENABLED**. Right-click on the **True Mobile wireless utility** icon in the system utility tray. A menu will appear.

From the pop-up menu, select **Enable Radio**.