

Kamehameha Butterfly



Life Cycle

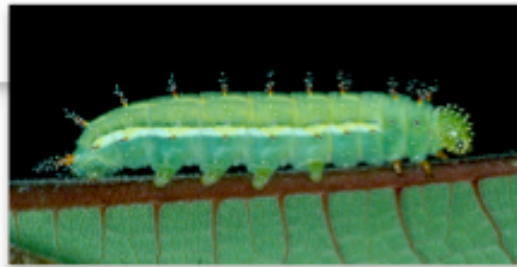
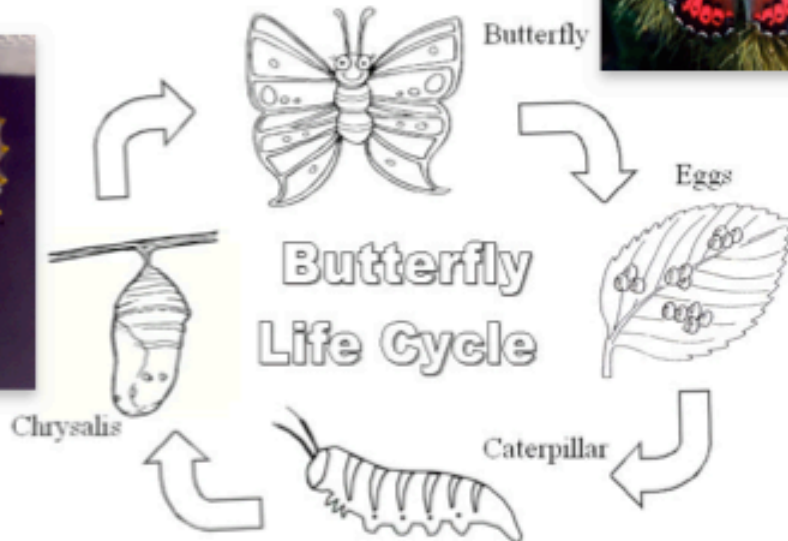
Description

Interesting Facts

Which INSECT do you want to learn about?

 Large Horn Beetle	 Kamehameha Butterfly	 Fire Fly
--	---	---

Kamehameha Butterfly Life Cycle



Kamehameha Butterfly

Description



māmaki tree

FOOD

The Kamehameha caterpillar and adult butterfly feeds on Hawaiian nettle (māmaki). The Māmaki is endemic to Hawai'i. It grows in wet forests at elevations of 200-6,000 ft. Māmaki is a small tree that reaches a height of 30 ft and a trunk diameter of 0.98 ft.



SIZE and COLOR

The Kamehamhea butterfly has bright red wings, bold black borders, and it has a 2 1/2 inch wingspan. Pulelehua are often seen fluttering near koa trees, where adults feed on the sweet sap oozing from broken branches or the māmaki tree.

Click on the book below to read more about butterflies.

HABITAT

Where you find a māmaki, you can find a Kamehameha butterfly. It is endemic meaning native to Hawaii, and lives on all Hawaiian Islands.



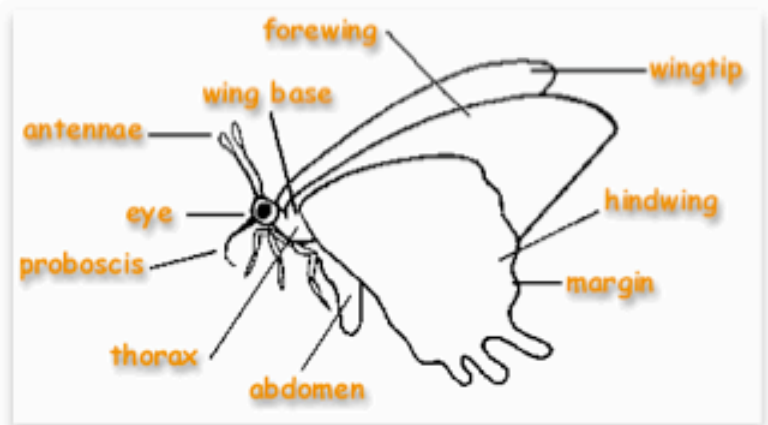
Kamehameha Butterfly

Interesting Facts



* On April 23, 2009, Kamehameha butterfly, became the official insect of Hawaii.

* The Kamehameha butterfly is one of only two species that is native to Hawaii. The other native species is the koa butterfly.



* The Hawaiian name for butterfly is pulelehua: pulelo "to float" or "to undulate in the air" + lehua "flower from the ohia tree".

