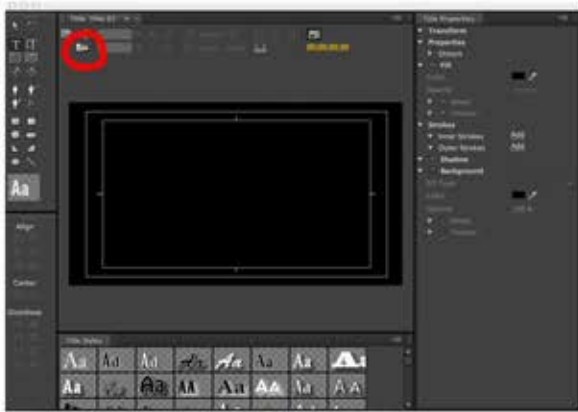


Making a KS Slate

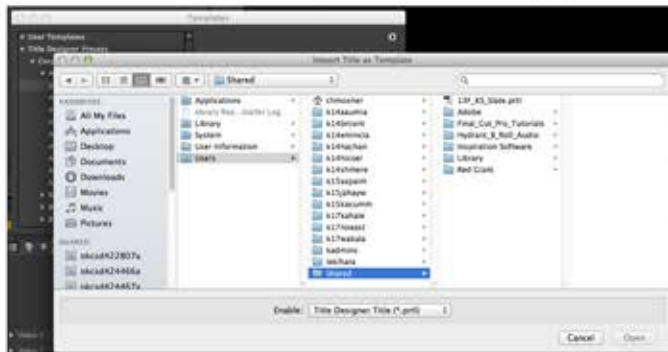
1. Add a new title by the drop down menu at top..Title--> New Title--> Default Still
2. In the Title Maker, click on the Templates icon (circled)



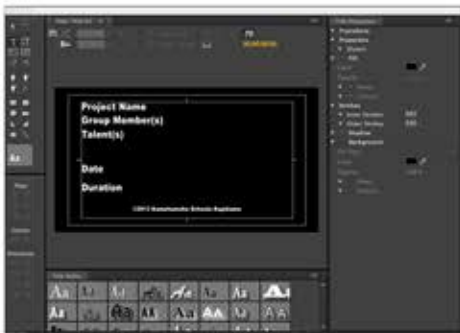
3. In the Templates window, click on the triangle in the top right corner (circled)



4. Select "Import File as Template..."
5. Find your Mactintosh HD
6. Navigate through Users--> Shared
7. Double click on "13F_KS_Slate"



8. Keep the default name as 13F_KS_Slate and click OK
9. Click OK again
10. Edit the five different areas carefully without changing font, size, placement, etc.



FILLING OUT KS SLATE
Use First and Last Names
Separate names with comma's
Date is the date of final export
Duration is entire edit without Slate



11. Drop into timeline at the very beginning of your video
12. In future edits, just go Title--> New Title--> Based on Template