

Congratulations! You're Accepted!



Kilo pā'a 'ia nā 'āpana a ho'ohahi i ke one o Kilo Kanakahi
Many parts entwined as one, united upon the sands of Kilo of the chief Kanakahi



UNIVERSITY
of HAWAII
HILO



Hi everyone!

Congratulations on your acceptance to UH Hilo! You should be very proud of yourself for reaching this life milestone. I know that the situation surrounding the current COVID-19 pandemic is probably not how you imagined spending your last months of high school, but please know that I'm here to help. Selecting which college to attend and navigating the enrollment process can feel overwhelming so don't hesitate to reach out to me with any of your questions or concerns. I can be reached at jnaguwa@hawaii.edu or you can call or text (808) 557-8015.

I look forward to hearing from you and I hope to see you in Hilo!

Warmest aloha,

Jen Naguwa

Assistant Director of Admissions, University of Hawai'i at Hilo

 facebook.com/uhhadm



[@uhhiloadmissions](https://www.instagram.com/uhhiloadmissions)



[@uhhiloadmission](https://www.twitter.com/uhhiloadmission)

We have much to offer...

Away from home, but not too far

National Student Exchange & Study Abroad

3,141 students

20 students per class

Over 20 offices to help get you connected on campus

Most diverse 4-year public institution

38 undergrad majors, 12 graduate & doctorate majors

5 Residence Halls, Student Life Center, Living Learning Communities



UNIVERSITY
of HAWAII
HILO



Great "Home Away from Home" Option



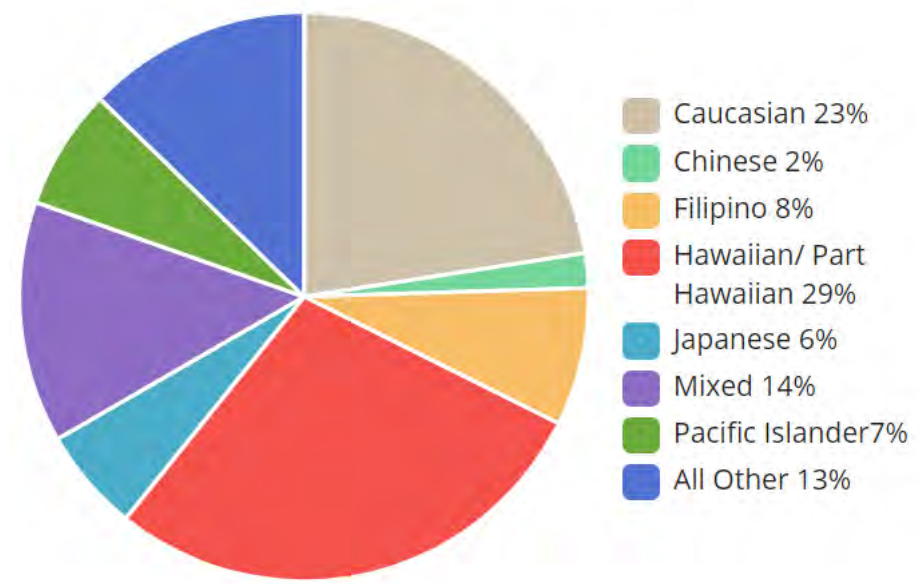
3,141 students inspire us daily!



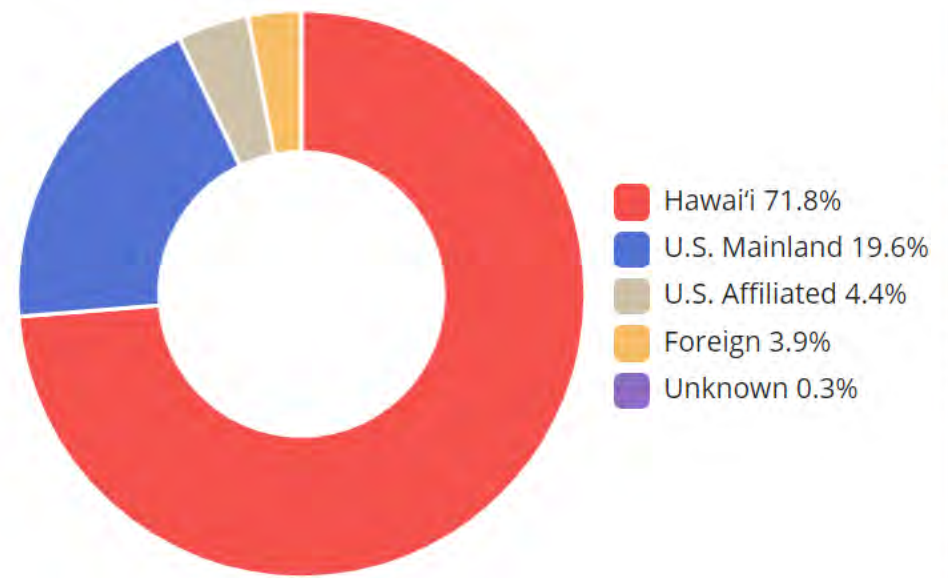


**Most
Ethnically
Diverse
National
University**

Student Diversity (full-time students)



Residency



UNIVERSITY OF HAWAI'I AT HILO PRESENTS

45th Annual
INTERNATIONAL NIGHTS

FRIDAY, FEB. 21, 2020, 7:30 pm
SATURDAY, FEB. 22, 2020, 7:30 pm

UH HILO PERFORMING ARTS CENTER
See The Shows. See The World.



Ticket Prices:
\$15 - General Admission
\$10 - Senior Citizens (55 years and older)
\$5 - UH Hilo/HawCC Students & Keiki (17 years and younger)

Tickets are available at the UH Hilo Performing Arts Center Box Office Tuesday-Friday, 10am - 2 pm, by phone at 808-932-7490 or online at hilo.hawaii.edu/depts/theatre/tickets. For ticket information, please call (808) 932-7490

For disability accommodations, please call (808) 932-7467 by February 10.

Co-Sponsored by International Student Services, International Student Association, UH Hilo Student Association, Center for Global Education & Exchange, UH Hilo Diversity Committee.





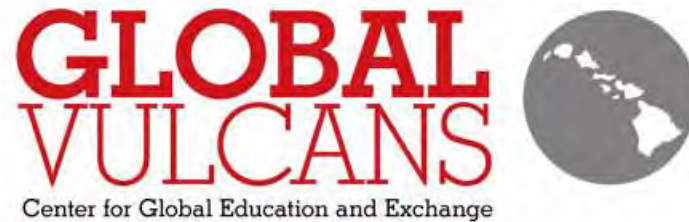
5 Residents Halls | Student Life Center | Living Learning Communities



Opportunities to participate in National Student Exchange, Study Abroad & Semester at Sea



<https://hilo.hawaii.edu/exchange/>



<https://hilo.hawaii.edu/exchange/nse/>



Student Support Services



Designated place of learning, at the University of Hawai'i at Hilo, which allows students to thrive!

<http://kipuka.uhh.hawaii.edu/index.php>



Services:

- Cheapest printing on campus
- Peer mentoring program to support new students who enroll at UH Hilo
- Tutoring in 'ōlelo Hawai'i, English, writing, math and science
- Academic advising – college and career planning, degree pathways mapping, course selection, scholarship/FAFSA support, academic probation advising, academic/financial aid appeals, transfer support, general advising, connecting students to available resources
- Access to computers
- Huaka'i around the island
- Community service opportunities



<https://hilo.hawaii.edu/kilohana/tutoring.php>

Free tutoring for the following classes:

- Biology
- Chemistry
- Computer Science
- Marine Science
- Math
- Physics/Astronomy
- Statistics
- Writing

TRIO

STUDENT SUPPORT SERVICES

<https://hilo.hawaii.edu/sssp/>

Student Support Services Program is a federally funded TRiO program designated to assist eligible students in achieving their maximum potential in college.

Services offered:

- Advising
- Financial aid counseling
- Tutoring
- Access to computers, printers and scanners
- Monthly financial literacy workshops
- Skill building workshops
- Free Theater tickets



<https://hilo.hawaii.edu/studentaffairs/uds/>

The University Disability Services Office provides services and supports to disabled students, faculty and staff at the University of Hawai'i at Hilo. These services include review of assessments, and providing reasonable accommodations designed to assure that students with disabilities may succeed in the least restrictive environment as possible. In addition to serving as an advocate for disabled members of the campus community, the office also provides consulting on facilities development, educational and awareness programs, and general support for diversity activities at UH Hilo.

UH Hilo Counseling Services



<https://hilo.hawaii.edu/studentaffairs/counseling/>

Counseling Services develops and delivers counseling, consulting, prevention and outreach services for the UH Hilo community that empower students to achieve personal and academic goals. We seek to be sensitive to students of diverse needs and cultures, backgrounds, ages, and abilities, and to be LGBTQ+ affirming. Counseling Services provides free, confidential personal counseling to all UH Hilo students.



<https://hilo.hawaii.edu/food-pantry/>

Hale Pa'i 'Ai services are available to any UH Hilo student in need of food assistance. No eligibility criteria or financial forms are required, just a validated UH Hilo student ID. All we ask is that students use Hale Pa'i 'Ai services only as needed so we are able to serve as many students in need as possible.



FYE

UH Hilo First Year Experience Office

<https://hilo.hawaii.edu/fye/AboutFYE.php>

FYE is committed to supporting all of the newest members of our university 'ohana . Our mission is to build a foundation for student's full academic and social integration into the campus through the development of long lasting connections to other students, faculty, staff and student support resources; to build a supportive learning environment that promotes academic success; and to create a commitment to and understanding of what it means to be a proud member of our UH Hilo 'ohana.



MENTOR COLLECTIVE

First-year students can now register for a peer mentor through Mentor Collective



TARGET SHUTTLES



FALL 2019 DATES

Friday, September 6	Friday, October 18
Friday, September 13	Friday, October 25
Friday, September 20	Friday, November 1
Friday, September 27	Friday, November 8
Friday, October 4	Friday, November 15
Friday, October 11	Friday, November 22

FYE will be providing a FREE Target Shuttle Service for students!

Meet outside of the Cashier's Office on the 1st floor of the Student Services Center.

Shuttles will leave campus between **4:45 PM - 6:00 PM**.
The last shuttle will leave Target at **7:30 PM**.



FOR DISABILITY ACCOMMODATIONS, PLEASE CONTACT FIRST YEAR EXPERIENCE AT (808)932-7384 AT LEAST 10 DAYS BEFORE YOUR DESIRED SHUTTLE



FIRST YEAR EXPERIENCE PRESENTS...



BUDGETING 101

IN COLLABORATION WITH



DATE:
WEDNESDAY, OCTOBER 9, 2019

TIME: 3:00 PM
LOCATION:
STUDENT SERVICES CENTER
ROOM W-201



FOR DISABILITY ACCOMMODATIONS, PLEASE CONTACT FIRST YEAR EXPERIENCE AT (808)932-7384 OR UHFYE@HAWAII.EDU

JOIN US FOR WAFFLES & COFFEE TONIGHT AT HAUMANA HOU!

5:00PM - 7:00PM
@ SSC W-201



no, first year experience



FIRST YEAR EXPERIENCE PRESENTS



FIRST YEAR STUDENT SOCIAL

THURSDAY, JANUARY 30
4:30 - 6:00 PM
@ DA LAVA TUBE IN LAVA LANDING



FOR DISABILITY ACCOMMODATIONS, PLEASE CONTACT FIRST YEAR EXPERIENCE AT (808)932-7384 OR UHFYE@HAWAII.EDU



<https://hilo.hawaii.edu/campuscenter/sac/>

The Student Activities Council provides programs, activities and services which serve the co-curricular cultural, social, recreational and educational interests of students of the University of Hawai'i at Hilo. The SAC contributes to the development of students' skills and provides experience in leadership, program planning and development, volunteer management and fiscal management.

SAC
Welcome Back
Ice Cream
Snack

Monday, January 13, 2020
CC Plaza

Join the Student Activities Council in beating the hot Hawaiian winter with some ice cream. Welcome the new spring semester the right way at the SAC table located in the CC Plaza

Must have a valid Spring 2020 Student ID to attend. For disability accommodation, please contact the Student Activities Council (808) 932-7374, 932-7000 (TTY) before 1/5/20.

The SAC logo is located in the bottom right corner of the poster.

2020

SING IN THE NEW YEAR

Join SAC to Sing In The New Year for its monthly open mic karaoke event! Enjoy sushi, sparkling cider, a photo booth, and talent! While supplies last.

JANUARY 16TH, 2020
6 P.M. - 8 P.M.
CAMPUS CENTER 301

Must have a Spring 2020 validated UH Hilo student ID to participate.
For disability accommodation, please contact the Student Activities Council (808) 932-7374, 932-7002(TTY) before 4/15/19

The SAC logo is located in the top right corner of the poster.

LORD OF THE RINGS TRILOGY
OH HELL WEEK
MOVIE NIGHT

Join the Student Activities Council in watching The Lord of the Rings trilogy this Oh Hell Week. Pizza from Dominos' and burgers from McDonalds will be served as well as drinks, while supplies last.

DECEMBER 12-13, 2019
9 p.m. - 6 a.m.
Campus Center Plaza

Must have a Fall 2019 validated UH Hilo student ID to participate.
For disability accommodation, please contact Campus Center at (808) 932-7365, 932-7002(TTY) before 12/10/19

The SAC logo is located in the bottom right corner of the poster.



UNIVERSITY OF HAWAI'I AT HILO STUDENT LIFE CENTER

<https://hilo.hawaii.edu/rec/center/>

The goal for the Student Life Center facility is to expose as many as possible of the UH Hilo Community to activities that will improve their quality of life. The Student Life Center strives to provide an open, safe environment for recreation, learning, and social interaction while meeting user demands. The primary purpose and focus for the new Student Life Center is for student usage. Thoughtful planning is given to facility policies and procedures to preserve student recreational programming space.

Services Offered:

- Outdoor EdVenture program that takes students to various parts of the island for free on the weekends
- Nearly 23,000 square feet of indoor fitness/recreational rooms, a cardio and weight room, dance and aerobic rooms, a lounge with wireless internet, an indoor café, locker rooms, an Olympic-sized swimming pool, sand volleyball court, and outdoor basketball courts.
- Intramural sports – Volleyball, basketball, soccer, and dodgeball
- Sport club program – Sailing, canoe club, rugby club, jujitsu, and judo
- Certifications – SCUBA, First Aid/CPR, AED/O2, Lifeguarding, and Wilderness and Remote First Aid




SUNDAY	MONDAY	TUESDAY	WEDNESDAY	THURSDAY	FRIDAY	SATURDAY
	<i>Monday - Friday from 9:00pm - 11:00pm @ UH Hilo Gymnasium CLOSED on Holidays</i>					1 Basketball & Volleyball
2	3 3on3 Basketball	4 Indoor Soccer	5 Basketball	6 Indoor Soccer & Dodgeball	7 Basketball & Volleyball	8
9	10 Basketball	11 4v4 Volleyball Tournament	12 Basketball	13 Indoor Soccer & Dodgeball	14 Basketball & Volleyball	15
16	17 NO-REC Presidents Day HOLIDAY	18 Indoor Soccer	19 Basketball	20 Indoor Soccer Tournament	21 Basketball & Volleyball	22
23	24 Basketball	25 Indoor Soccer	26 Basketball	27 Indoor Soccer & Dodgeball	28 Basketball & Volleyball	29

Majors at UH Hilo

A traditional Hawaiian outrigger canoe is shown on the water, featuring a large white sail and a wooden hull. Several people are on board, and the background shows a coastal landscape under a clear blue sky.

- Administration of Justice
- Agriculture
- Anthropology
- Art
- Astronomy
- Biology
- Business Administration
- Chemistry
- Communication
- Computer Science
- English
- Environmental Science
- Geography
- Geology
- Gender and Women's Studies
- Hawaiian Studies
- History

- Japanese Studies
- Kinesiology & Exercise Science
- Liberal Studies
- Linguistics
- Marine Science
- Mathematics
- Natural Science
- Nursing
- Performing Arts (Music/Drama/Dance)
- Pharmacy
- Philosophy
- Physics
- Political Science
- Psychology
- Sociology



11 Steps to Enroll at UH Hilo

1. Set up your UH username and password by going to www.hawaii.edu/username

Check Status of UH Username

Your [UH Username](#) is your electronic key to gaining access to the university's online services.

Complete the following form to activate your [UH Username](#). Your information will determine if you need a new [UH Username](#) created, or a password reset on an existing [UH Username](#).

For assistance, [contact the ITS Help Desk](#).

Notices

- This website is unavailable from 2:00 A.M. to 4:31 A.M. [HST](#) for system backups. The current time is 9:26 P.M. [HST](#).
- † The requested information is used to verify your identity and eligibility for a [UH Username](#). Disclosure of your Social Security Number ([SSN](#)) is voluntary. If you do not have a [SSN](#) or do not wish to disclose it online, you may activate your account or reset your password by visiting your [Campus Representative](#) to verify your identity in person.
- [SSN](#) is a 9-digit number, and may be entered with or without hyphens, e.g. 123-45-6789 or 123456789.
- Your [UH Number](#) should be in the acceptance letter sent to you by your [UH](#) home campus, and might be of the form 12345678 or 1234-5678.
 - If you received a [UH Number](#) that starts with an @ sign (e.g. @12345678), please [contact the Help Desk](#) to receive your permanent [UH Number](#). The Help Desk will ask you for your full legal name and your temporary "@" [UH Number](#).
- Your confidential data is encrypted for security purposes. This server has a digital certificate that uses [SSL](#) technology to encrypt the data.
- Unauthorized access is prohibited by law in accordance with [Chapter 708, Hawaii Revised Statutes](#); all use is subject to [University of Hawaii Executive Policy E2.210](#).

Check Status Form

First Name:

Middle Name (leave blank if none):

Last Name:

Identification Number:

([UH Number](#) or Social Security Number †)

Re-enter Identification Number:

Date of Birth:

2-digit Month

2-digit Day

4-digit Year

Check Status

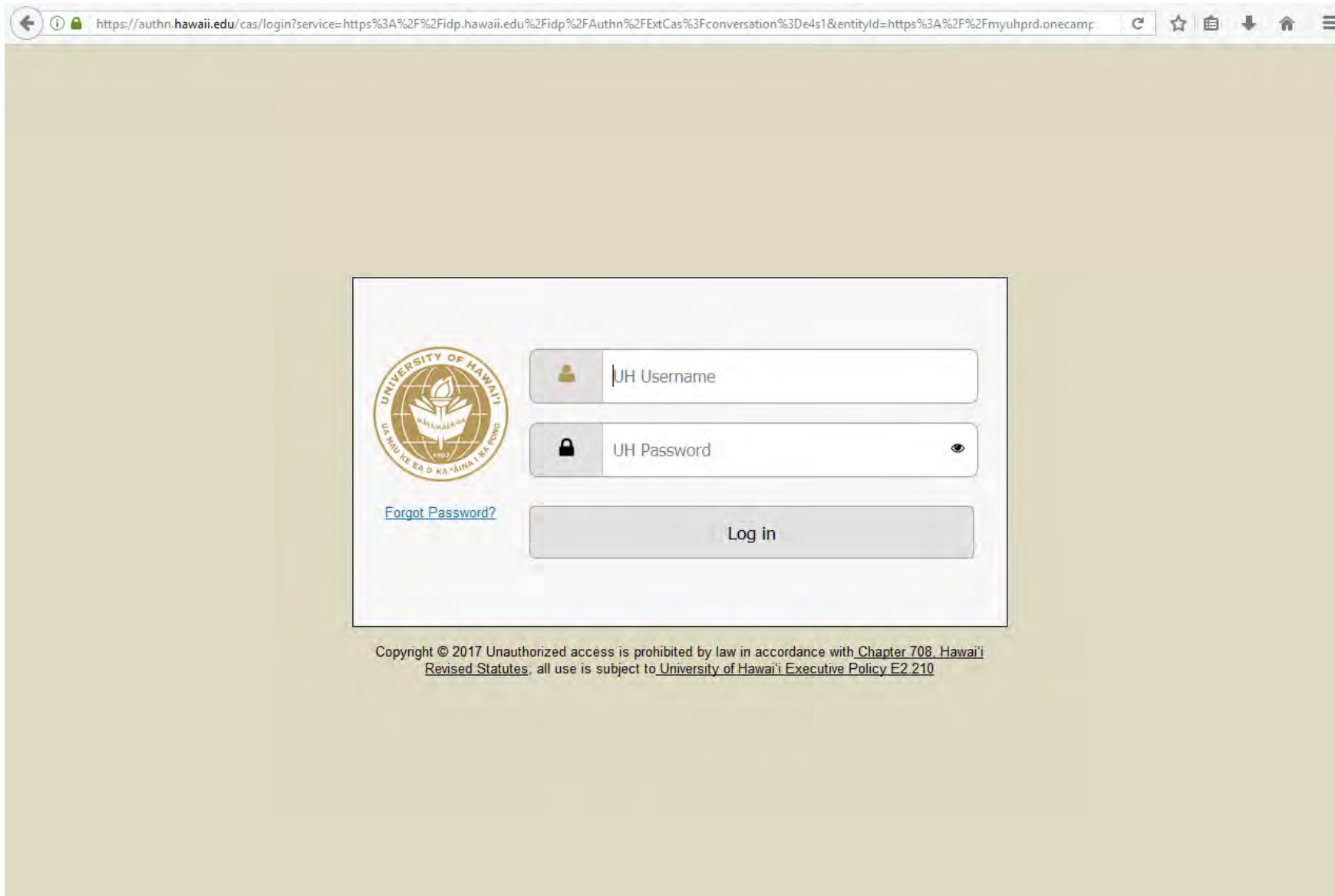
2. Familiarize yourself with the MyUH Services site - myuh.hawaii.edu

The screenshot shows the MyUH Services website. At the top left is the University of Hawai'i logo. The main header is dark with the text "MyUH Services" and a search bar containing "What would you like to do?". Below the header are navigation options: "Browse Categories", "All Campuses", and "All Roles". A "Sign In" button is visible in the top right. The main content area is titled "Most Popular" and displays a grid of service tiles. Each tile includes an icon, a title, and a subtitle. The tiles are: Gmail (All Campuses), STAR GPS Registration (All Campuses), Laulima (All Campuses), View My Financial Aid Information (All Campuses), Summary Class List (All Campuses), View My Student Account (All Campuses), Pay Tuition and Fees (Student Login) (All Campuses), Class Availability (All Campuses), Student Services Menu (All Campuses), Registration Overrides (All Campuses), Class Availability (Manoa), Faculty Services Menu (All Campuses), MySuccess (Hawai'i, Hilo, Honolulu, Kapi'olani, ...), View My Final Grades (All Campuses), and Google Drive (All Campuses). A "Sign In" dropdown menu is open over the Laulima tile, showing options: Sign In, My Favorites, Preferences, Contact, and Help. The URL "https://myuh.hawaii.edu" is visible in the bottom left corner.

This is where you would access:

- Financial Aid Package (View My Financial Aid Information)
- Fall 2020 Course Registration (STAR GPS Registration)
- UH email account (Gmail)
- Paying tuition, fees, and housing (Pay Tuition and Fees)
- Website for your courses (Laulima)

3. Check your UH email account daily – gmail.hawaii.edu



Once you set up your UH email account, all UH Hilo email will be sent to this account. Please make sure to check this account regularly or have it forwarded to an email that you check more frequently.

4. Apply for Financial Aid

If you have not sent us your FAFSA, please do so. It's not too late. Financial Aid packages have been posted to your MyUH Services account.

Announcements about Chancellor Scholarship and Inspired by You Scholarship awardees will be made later this month.

Financial Aid Office: 808-932-7449

Website: <https://hilo.hawaii.edu/financialaid>



To view your financial aid package...

Personal Information Student **Financial Aid**

[RETURN TO MENU](#) [SITE MAP](#) [HELP](#) [EXIT](#)


Financial Aid

 [My Overall Financial Aid Status](#)

 [My Eligibility](#)

- [Holds](#)
- [Student Requirements](#)
- [Academic Progress](#)
- [View My Transcript in STAR](#)
-Login to STAR to view your academic record

Select: UH Hilo SY 2020-2021

 [My Award Information](#)

View account summary; Review award offers; Accept award offers; Display award payment schedule; View loan applications; Review withdrawal information.

- [Award By Aid Year](#)
- [Award Payment Schedule](#)
- [Sign Up for e-Refunds](#)
- [Award History](#)

E-Mail Your Financial Aid Office / Financial Aid Website

• UH Manoa	finaid@hawaii.edu	http://www.hawaii.edu/fes
• UH Hilo	uhhfo@hawaii.edu	http://hilo.hawaii.edu/studentaffairs/finaid.php
• UH West Oahu	uhwo.finaid@hawaii.edu	http://www.uhwo.hawaii.edu/admissions/financial-aid
• Hawaii CC	hawccfbo@hawaii.edu	http://www.hawaii.hawaii.edu/financialaid
• Honolulu CC	honccfbo@hawaii.edu	http://www.honolulu.hawaii.edu/finaid
• Kapiolani CC	kapiinfo@hawaii.edu	http://www.kapiolani.hawaii.edu/admissions/financial-aid
• Kauai CC	kaucfbo@hawaii.edu	https://sites.google.com/a/hawaii.edu/financial-aid
• Leeward CC	lccfbo@hawaii.edu	http://www.leeward.hawaii.edu/finaid
• UH Maui College	maulfbo@hawaii.edu	http://maui.hawaii.edu/financial
• Windward CC	wccfbo@hawaii.edu	http://www.wcc.hawaii.edu/Financial_Aid

 [Federal Shopping Sheet](#)

Information about the Cost of Attendance and Aid that you have been awarded is provided in a standardized format which facilitates easy comparison with other higher education institutions.

1. Go to <https://myuh.hawaii.edu/>
2. Login with your UH username and password
3. Click on View My Financial Aid Information
4. Click on Award by Aid Year
5. Select UH Hilo SY 2020-2021
6. Click on Award Overview tab

This is a sample financial aid award package

Award Package By Aid Year UH Hilo Aid Year 2019-20

[General Information](#)
[Award Overview](#)
[Resources/Additional Information](#)
[Terms and Conditions](#)
[Accept Award Offer](#)
[Special Messages](#)

Print

Housing Status Information

The room and board components in your estimated **Cost of Attendance** budget are based on the **Housing Status** listed below. Please compare your estimated budget components and notify us if your actual costs are different, as it may affect your financial aid eligibility.

Need Calculation

Cost of Attendance	\$19,674.00
Estimated Family Contribution	\$.00
Initial Need	\$19,674.00
Outside Resource	\$.00
Need	\$979.00

Housing Status

With Parents

Cost of Attendance

Tuition	\$7,344.00
Fees	\$448.00
Books and Supplies	\$1,058.00
Room	\$2,732.00
Board	\$2,236.00
Personal Expenses	\$2,850.00
Transportation	\$2,912.00
Loan Fees	\$94.00
Nursing Fee	\$.00
Total:	\$19,674.00

Financial Aid Award by Term for the UH Hilo Aid Year 2019-20

Fund	Fall 2019		Spring 2020		Total
	Status	Amount	Status	Amount	
Hemenway Scholarship	Accepted	\$250.00	Accepted	\$250.00	\$500.00
Federal Pell Grant	Accepted	\$3,098.00	Accepted	\$3,097.00	\$6,195.00
UHH Opportunity Grant-Fin. Aid	Accepted	\$2,000.00	Accepted	\$2,000.00	\$4,000.00
Federal Work Study Program			Accepted	\$2,500.00	\$2,500.00
Fed Direct Sub Stafford Loan	Offered	\$1,750.00	Offered	\$1,750.00	\$3,500.00
Fed Direct Unsub Stafford Loan	Offered	\$1,000.00	Offered	\$1,000.00	\$2,000.00
Totals		\$8,098.00		\$10,597.00	\$18,695.00

The table at the bottom of the page is your financial aid award package. If you don't see this, please click on "Student Requirements" at the bottom of the page.

If you have questions regarding the above information, please contact the Financial Aid office.

If you don't see your financial aid award package and after clicking on "Student Requirements," you will see the message below. Please click on "Dependent Student Verification Worksheet 2020-2021," complete the worksheet, and return it to our Financial Aid Office. Once our Financial Aid Office receives your completed worksheet, we can put together a financial aid package for you.

Student Requirements **Holds** Academic Progress

Unsatisfied Requirements

Requirement	Status	As of Date
Dependent Student Verification Worksheet 2020-2021 Please complete and submit the Verification Worksheet to the Financial Aid Office. Don't forget to sign the form.	Not Received	Jan 28, 2020
Student/Spouse 2018 Income Information To provide student income information, you may either use the IRS Data Retrieval Tool (via the FAFSA) or submit a Tax Return Transcript or a signed copy of your 2018 Federal Income Tax Return along with any Schedules 1, 2 and/or 3, if applicable. If you did not file a tax return, submit all 2018 W-2's, if applicable. Please note: Independent students must also submit an IRS Verification of Non-Filing. Contact the Financial Aid Office if you are unable to obtain IRS Verification of Non-Filing or for non-U.S. income verification requirements.	Not Received	Jan 28, 2020

The Requirements link enables you to download the form necessary to complete the specific requirement or transfers you to another page to satisfy the requirement.


Satisfied Requirements

Requirement	Status	As of Date	Fund	Term
Admitted to a degree program at UH Hilo	Satisfied	Jan 28, 2020		
FAFSA results received	Satisfied	Jan 28, 2020		
Parents' 2018 Income Information	Data Retrieval	Jan 28, 2020		

5. Submit Intent to Enroll Form

<https://hilo.hawaii.edu/admissions/intenttoenroll.php>

Intent to Enroll
Once your Intent-to-Enroll form has been received and processed by the Admissions Office you will be allowed to register for classes during one of our advising and registration sessions.



UNIVERSITY of HAWAII
HILO

Intent to Enroll Form

Student ID Number: _____ (Your ID is printed on your acceptance letter)

Name _____
Last First MI

Address (Street Number or P.O. Box) _____

City _____ State _____ Postal/Zip Code _____

YES! I accept your offer of admission and will enroll for the Fall Spring Semester

No, I will not enroll at this time.

GENERAL UNDECLARED MAJORS ONLY (Indicate an area of interest below):

Agriculture Hawaiian Studies Social Sciences Education
 Business Administration Humanities Natural Sciences No area of interest yet

Signature _____ Date _____
By entering your full name above you agree that it is the same as your signature

Intent to Enroll Fee Form: You do not need to pay the \$60 non-refundable tuition deposit at this time if you are applying for financial aid. Please indicate your financial aid status or method of payment below. If you are paying the fee you can do so by check or money order drawn from a U.S. Bank or by credit card.

Please fill in the appropriate information below:

Choose I am applying for Financial Aid and I intend to enroll at UH Hilo (if yes check box and submit form)
One I am submitting my \$60 payment. (if yes check box and indicate payment type below)

If submitting payment, indicate method of payment below:

Choose Money Order or Check (attach check or money order drawn from a US Bank and submit form)
One Credit Card (complete credit card information below and submit form)

Credit Card Information (complete if paying by credit card):

If you are planning to attend UH Hilo in fall 2020, please send us your Intent to Enroll form. Students applying for financial aid do not need to submit a \$60 tuition deposit. There is no deadline for this form, but we would appreciate an update by May 1. If you need more time to make a decision, please don't hesitate to reach out to us. We would be happy to work with you to answer any questions or address any concerns you may have.

6. Apply for On-Campus Housing

kanohona.uhh.hawaii.edu



The screenshot shows the login page for the University of Hawaii at Hilo Kanohona portal. At the top left is the University of Hawaii logo, featuring a globe and a torch, with the text "UNIVERSITY OF HAWAII" and "HILO" below it. The page has a red header bar. Below the header is a navigation bar with "Home" selected. The main content area contains a login form with fields for "UH Username" and "Password", a "Remember Me" checkbox, a "Forgot Password?" link, and a "Log In" button. Below the form is a welcome message: "Welcome to the Housing Portal". A bold heading reads "Welcome to the University of Hawaii at Hilo Kanohona portal". The text below states: "In order to access this page you must logon with your UHH/HawCC MyUH username and password." A blue note follows: "Note: There has been some reported issues with the logon to our application. Should you need assistance or would like to request a paper version, please call the UH Hilo University Housing office at (808) 932-7403 or email us at uhhouse@hawaii.edu." Below this is a link: "Students Accepted to UHH or HawCC can request a username at: www.hawaii.edu/username/". At the bottom, there is a red link: "Link to UHH housing website: [click here](#)". The footer contains the text: "If you have any questions about this application process, please call (808) 932-7403 or email at uhhouse@hawaii.edu. Housing Portal - © StarRez Inc. 2018".

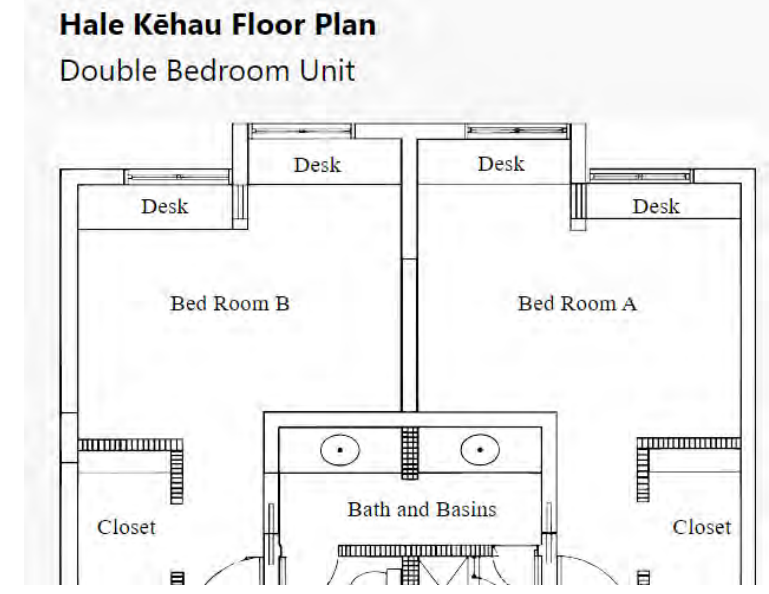
Please login to kanohona.uhh.hawaii.edu with your UH username and password. There is a \$10 application fee. You will be asked a series of questions all of which are intended to pair you with the best possible roommate. You can set up a roommate profile and request to room with someone. Roommate pairings are not guaranteed. In the application, you will also have to indicate the top 3 resident halls that you would like to live in. Please see the next several slides for room layouts. You will also have to indicate which meal plan you'd like. We also have Living Learning Communities in the resident halls which are a really good way to meet other freshmen that have the same interests as you.

As you are going through the application, if you have any questions, please contact me.



Hale 'Alahonua





Hale Kehau

Hale Kanilehua: "House of the Sound of the Rain Falling on the Lehua Blossom"

Hale Kanilehua Floor Plan
Double

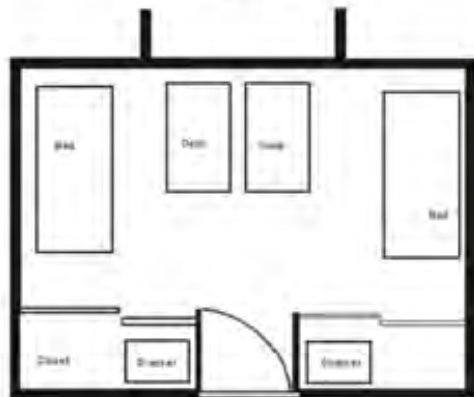


Hale Kanilehua



Hale Kauanoë: "House of the Misty Rain"

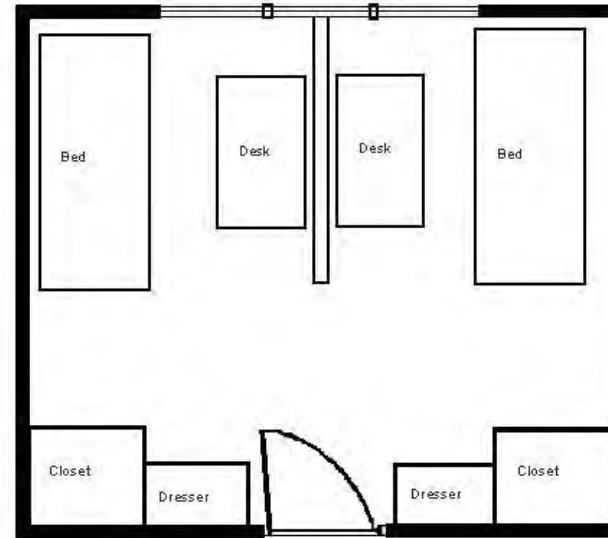
Hale Kauanoë Floor Plan
Double



Living Learning Communities



Hale Kanilehua Floor Plan: Double

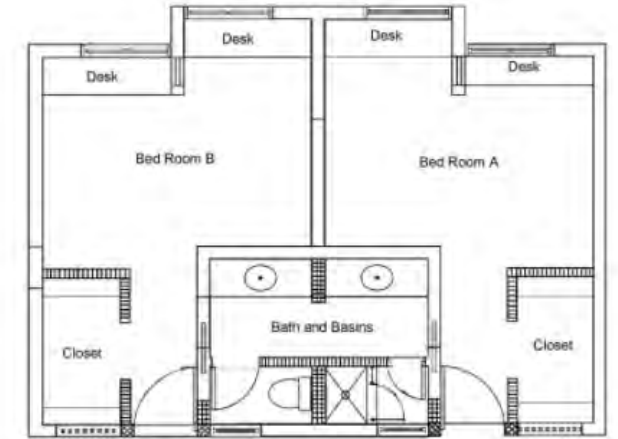


Traditional Style

shared room with one roommate and community bathroom with private stalls.

- Hawaiian Language and Culture
- Environmental Sustainability
- Business Entrepreneurship

Hale Kehau Plan Suite Unit



Suite-Style

Shared room and closet with one roommate and shared suite bathroom with adjacent room.

- Natural Sciences
- Health and Wellness
- Creative Arts



UNIV 101 class once a week

Faculty mentor for each community

University Dining

Sodexo Dining Services & Other Campus Food Options!



Meal Plan Options

- Plan A: 7 Meals/Week + \$500 Flex Points
- Plan B: 10 Meals/Week + \$450 Flex Points
- Plan C: 14 Meals/Week + \$325 Flex Points
- Plan D ('Alahonua Only): 175 Meals/Semester + \$300 Flex Points

Other Options

- Anuenue's Kitchen
- Campus Center Dining Hall
- Déja Brew
- Starbucks on-the-go Kiosk
- Teapresso Bar
- Thai Smile

Meals per week are used at the Hale Kehau Dining Hall for lunch or dinner on weekdays and brunch or dinner on weekends. Unused meals at the end of the week cannot roll over to the next week. Flex points can be used at the Campus Center Dining Hall, Munchies or Deja Brew.

7. Submit your Mandatory Health Forms

<https://hilo.hawaii.edu/studentaffairs/health/forms.php>

Due August 1

- Fall 20 _____
- Spring 20 _____
- Summer 20 _____



UNIVERSITY of HAWAI'I
SYSTEM

Print Form

UH Hilo - Student Medical Services
Campus Center, Room 212.
200 W. Kāwili St. Hilo, HI 96720

Phone: (808) 932 7369 **Fax:** (808) 932-7368
Filedrop: hawaii.edu/filedrop/
Recipient: uhhsms@hawaii.edu

Health Clearance Form

The State of Hawai'i Department of Health (DOH) Hawai'i Administrative Rules, Title 11 (Chapter 157 and 164.2) requires certain health requirements be met for attendance to a post-secondary institution. Registration is not allowed until all health clearances are met and submitted to the Admissions and Records Office. Health clearances must bear the signature of the practitioner, stamp, or imprinted name of the department or practitioner or name of licensed facility. A practitioner is a physician, advanced practice registered nurse (APRN), or physician assistant (PA) licensed to practice in the United States. *This form may be rejected if it is not fully completed and signed in both sections by a U.S. licensed medical practitioner.*

NAME: _____ Birth Date: _____ UH ID: _____
Print Last Name, First Name MI

Student's Signature: _____ Date: _____

TUBERCULOSIS (TB) CLEARANCE

I have evaluated the individual named above using the process set out in the State of Hawai'i DOH TB Clearance Manual and determined that the individual does not have TB disease as defined in section 11-164.2-2, Hawai'i Administrative Rules.

8. Placement Tests

www.hilo.hawaii.edu/kilohana/placements

MATH:

- Accounting
- Agriculture
- Astronomy
- Business
- Computer Science (Pre-Engineering)
- Math
- Natural Science
- Physics

MATH & CHEMISTRY:

- Aeronautical Science
- Biology
- Chemistry
- Environmental Science
- Geology
- Marine Science
- Pre-Medicine
- Pre-Pharmacy
- Pre-Veterinary

Math and Chemistry placement assessments are recommended for the majors listed above. These assessments can be taken at home on a computer with internet access. You will need to login to the assessment with your UH username and password. The assessments have a time limit and study guides are provided.

‘Ōlelo Hawai‘i placement assessment: Wednesday, August 19 at 9am at Hale‘ōlelo. No reservations required.



9. Final Transcripts & Test Scores

A photograph of three young people, two men and one woman, smiling and looking towards the right. They are outdoors, with palm trees and greenery in the background. The man on the left is wearing a grey long-sleeved shirt and a dark baseball cap. The woman in the middle is wearing a black t-shirt and has a long braid. The woman on the right is wearing a striped shirt and is partially out of frame.

Please send us your final high school transcript by September 1, 2020.

If you take an AP exam, please send us your scores so we can see if we can award you college credit.

If you earned any college credit from a non-UH campus, please send us your official transcript so that we can transfer those credits to UH Hilo.

10. New Student Orientation



Create Connections | Get to Know Faculty, Staff & Peers | Workshops for Success

NSO: August 19-22 Registration for NSO is now OPEN!

hilo.hawaii.edu/orientation/registration

11. Advising for Freshmen

hilo.hawaii.edu/advising



Kurt Dela Cruz
kdela@hawaii.edu

General/Undeclared



Comfort Sumida
comfort@hawaii.edu

Computer Science
Marine Science
Math
Pre-Engineering



Keian Shon
kshon3@hawaii.edu

Agriculture
Chemistry
Kinesiology
Exploratory Health
Sciences



Sarah Juran
sjuran@hawaii.edu

Accounting
Astronomy
Biology
Business
Geology
Hawaiian Studies
Linguistics
Natural Sciences
Physics



Kip Nagata
kipyn@hawaii.edu

Art
Administration of Justice
Anthropology
Communication
English
Environmental Science
Gender & Women's
Studies
Geography
Japanese Studies
Performing Arts
Philosophy
Political Science
Psychology and Sociology

Once you commit to attending UH Hilo, please reach out to your academic advisor assigned by your major to register for your fall 2020 UH Hilo classes. Registration begins on May 1. You will be required to meet with your academic advisor twice during your freshmen year.



Check out our Campus Tour Highlights

See you in Hilo!



Jennifer Naguwa

Contact Information:

Phone: (808) 557-8015

Email: jnaguwa@hawaii.edu



facebook.com/uhhadm



[@uhhiloadmissions](https://instagram.com/@uhhiloadmissions)



[@uhhiloadmission](https://twitter.com/@uhhiloadmission)