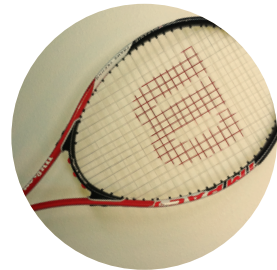
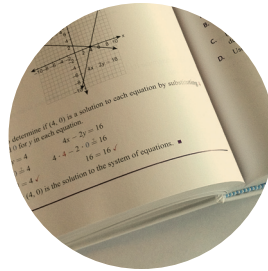




KAMEHAMEHA SCHOOLS®



Kapālama Summer School 2013

June 17 – July 19: Grades 1 – 8

June 10 – July 19: Grades 9 – 12

SUMMER 2013 NEIGHBOR ISLAND PROGRAMS

On Moloka'i:

For students entering grades 9–12, we will offer

WORLD HISTORY #978

(see p. 22 for course description).

For more information, please contact
Kamehameha Schools Resource Center Moloka'i Manager, Ron Kimball
or Coordinator, Maka Cobb-Adams at 1-808-553-3673.

On Kaua'i:

(All courses to be held June 17 to July 19, 2013)

For students entering grades 9–12, we will offer

WORLD HISTORY #978

(see p. 22 for course description and tuition).

For students entering grades 9–10 we will offer:

SPEECH COMMUNICATION #930

(see p. 19 for course description and tuition).

and

STUDY SKILLS #9680

Tuition: \$175

The focus of this course is to develop and strengthen students' organizational, oral communication, and writing skills so they can begin the year with confidence with the skills needed for success. ***Students must enroll in both Speech Communication and Study Skills courses.***

FOR STUDENTS ENTERING GRADES 7–8 WE WILL OFFER

READING, WRITING and STUDY SKILLS #885 (non-credit)

Tuition: \$340

Instruction will focus on the skills needed to achieve academic success; use of daily planner, time management, critical thinking and developing a personal style. Students will learn techniques to strengthen their reading and writing skills.

For more information, please contact
Kamehameha Schools Resource Center Kaua'i Manager, Coty "Buffy" Ofisa
or Coordinator, Ku'uilei Ho at 1-808-245-8070.

TABLE OF CONTENTS

General Information.....	3
Kamehameha Schools' Vision and Mission.....	3
Application Process.....	3-5
Course Changes/Withdrawals.....	5
Payment.....	5
Financial Aid.....	5-6
Academic Policies.....	6
Lunch Service.....	6
Student Drivers.....	6
Bus Transportation.....	6-8
List of Scheduled Courses.....	8-9
Elementary School Program (Grades 1-6).....	10-13
Middle School Program (Grades 7-8).....	13-16
High School Program (Grades 9-12).....	16-24
Afternoon Courses.....	24-25
Course Change/Withdrawal Form.....	27
Campus Map.....	Back cover



KAMEHAMEHA SCHOOLS®
KAPĀLAMA

ADMINISTRATION

Earl T. Kim, *Head of School*
Juvenna M. Chang, Ed.D., *Program Services Interim Director*
Connie Campbell, *Summer School Coordinator*

BOARD OF TRUSTEES

Micah A. Kāne, *Chairman*
Janeen-Ann Ahulani Olds, *Vice-Chairman*
Lance Keawe Wilhelm, *Secretary-Treasurer*
Corbett A.K. Kalama
Robert Nobriga

CHIEF EXECUTIVE OFFICER

Dee Jay A. Mailer

Websites:

<http://kapalama.ksbe.edu/summer>
<http://www.ksbe.edu/admissions>

GENERAL INFORMATION

Kamehameha Schools Kapālama Summer School (KSKSS)

Morning and afternoon classes will be held from:

Monday, June 17 – Friday, July 19 for grades 1–8

- Morning classes are 7:45 a.m. – 11:45 a.m.
2-hour classes are scheduled at:
7:45 a.m. – 9:35 a.m. and 9:55 a.m. – 11:45 a.m.
- Afternoon classes and PAA are 12:30 p.m.– 4:00 p.m.

High School classes will be held from:

Monday, June 10 – Friday, July 19 for grades 9–12

- Morning classes are 7:35 a.m. – 11:45 a.m.
2-hour classes are scheduled at:
7:35 a.m. – 9:30 a.m. and 9:50 a.m. – 11:45 a.m.
- 4-hour classes are 7:35 a.m. – 11:45 a.m.

The summer teaching staff is comprised of Kamehameha faculty and teachers from other private institutions, the State Department of Education, and mainland institutions. The average class size is approximately 24 students. Summer aides assist instructors and escort afternoon classes.

Summer School Web Site:
<http://kapalama.ksbe.edu/summer>

Summer School Main Office

From February 4, 2013 to June 4, 2013:
Pauahi Administration (Building #58), Ste. 224
Monday – Friday: 7:00 a.m. – 3:45 p.m.
Ph: 842-8765, Fax: 842-0850

From June 5, 2013 to July 22, 2013:
Kalanimōkū (Building #46), Room 411
Monday – Friday: 7:00 a.m. – 3:45 p.m.

The Summer School office is closed in observance of the following holidays:

- Monday, January 21: Martin Luther King, Jr. Day
- Monday, February 18: Presidents' Day
- Tuesday, March 26: Kūhiō Day
- Friday, March 29: Good Friday
- Monday, May 27: Memorial Day
- Tuesday, June 11: Kamehameha Day
- Thursday, July 4: Independence Day Holiday

Other Important Numbers —

- Admissions: 842-8800
- Enrichment Department: 534-8272
- Financial Aid and Scholarship Services: 534-8080
- Ho'oulu Hawaiian Data Center: 523-6228
- Kamehameha Schools Resource Center – O'ahu:
842-8705 or ksrc@ksbe.edu

KAMEHAMEHA SCHOOLS VISION

Kamehameha Schools is a dynamic and nurturing community committed to educational excellence. We assist people of Hawaiian ancestry to achieve their highest potential as “good and industrious men and women.” We do so by contributing to their development as people who are:

- Grounded in spiritual and Christian values;
- Intellectually, emotionally and socially self-reliant;
- Resourceful, resilient, lifelong learners;
- Equipped with the skills they need to succeed in endeavors of their choosing;
- Responsible, ethical, contributing members of their multicultural and diverse communities; and
- Prepared to practice and perpetuate the Hawaiian values and traditions of Ke Ali'i Pauahi.

KAMEHAMEHA SCHOOLS MISSION

Kamehameha Schools' mission is to fulfill Pauahi's desire to create educational opportunities in perpetuity to improve the capacity and well-being of people of Hawaiian ancestry.

APPLICATION PROCESS

Applications will be available at the Kapālama Admissions Office and at <http://www.ksbe.edu/admissions> beginning January 2, 2013. **KS Kapālama Summer School gives priority to current KS students. Remaining spaces will be filled based on the date your application is received.**

The application deadline is Thursday, February 28, 2013 (postmarked). Applications received after the postmark deadline will not be accepted.

Please be advised that security procedures are in effect at the Kapālama Campus through May 23, 2013. Parents and visitors are not allowed on campus before 2 p.m., without prior authorization. *For this reason, the Admissions Office strongly urges families to mail completed applications.*

The Admissions Office shall accept completed applications Monday through Friday, during the hours of 2:00 p.m. to 4:15 p.m. No other time is permitted.

Completed applications may also be delivered to the following locations:

- Admissions Office drop box located in the Kalihi-Palama Preschool parking lot (below the KS-Kapālama campus main gate);
- Kamehameha's Applicant Services Center located at the Kawaiaha'o Plaza (567 S. King Street, Suite 102), Monday through Friday, 7:00 a.m. to 5:00 p.m.; or
- Kamehameha's Community Learning Center located at Nānākuli (89-101 Farrington Highway), Monday through Friday, 8:00 a.m. to 4:00 p.m.

For other delivery options, please visit: <http://www.ksbe.edu/admissions> to download a list of Kamehameha's One-Stop-Shop site locations (dates and hours of operation included). Please note that applications will only be accepted at these sites when Kamehameha staff members are on duty. Please review the dates and hours of operation carefully if you plan to deliver your application to one of our One-Stop-Shop locations.

For application information, please contact the Admissions office at (808) 842-8800.

Students entering grades 1–8: No Orientation is held. Parents and students may schedule individual campus tours by calling 842-8765.

Students in grades 5–8: Classes will be held on the new Kamehameha Middle School campus.

Explorations Series Program Applicants: Students applying to both the Explorations Series and Kapālama Summer School programs are recommended to request attendance to the following weeks on the Explorations Series Program Selection Form.

Ho'omāka'ika'i: Week 2 (June 9 – June 14) or Week 5 (June 30 – July 5)

Ho'olauna: Week 1 (June 2 – June 7) or Week 2 (June 9 – June 14) or Week 5 (June 30 – July 5)

Kūlia I Ka Pono: Week 1 (June 2 – June 7)

NOTE: Students in grades 6–8 may select other weeks, however, please keep in mind our attendance policy since selection of other weeks will cause your child to be absent from school for five (5) days. Students in grades 9–12 may not be absent for more than three (3) days and students in grades 1–8 may not be absent for more than five (5) days (see ACADEMIC POLICIES).

Performing Arts Academy students are required to

complete a mandatory hō'ike (show) the final week of the academy. Please do not sign up to attend the Explorations Series during Week 7 (July 14 – July 19).

POLICY TO GIVE PREFERENCE TO HAWAIIAN APPLICANTS

Kamehameha Schools' policy on admissions is to give preference to applicants of Hawaiian ancestry to the extent permitted by law. If you would like to be considered under that policy, your Hawaiian ancestry must be verified by Kamehameha's Ho'oulu Hawaiian Data Center (Data Center). Please work directly with the Data Center staff to complete your ancestry determination as soon as possible and preferably no later than the application deadline for the program to which you are applying. For more information please call the Data Center at 808-523-6228, or toll-free at 1-800-842-4682, then press 2. You may also check: www.ksbe.edu/datacenter for answers to frequently asked questions or to request an Ancestry Registry form.

HOW TO APPLY

I. Current KS Students

A paper application is not required if registering via KSCConnect. KSCConnect windows will open at 7 a.m. on the first day and close at 4 p.m. on the last day.

HIGH SCHOOL APPLICANTS —

Two catalogs will be available in each homeroom as reference copies.

Registration windows for KSCConnect:

- Current grade 11 students: January 18 – 20, 2013
- Current grade 10 students: January 21 – 23, 2013
- Current grade 9 students: January 24 – 26, 2013

MIDDLE SCHOOL APPLICANTS —

Catalogs will be available online and mailed home upon request.

Registration windows for KSCConnect:

- Current grade 8 students: January 27 – 29, 2013
- Current grade 7 students: January 30 – February 2, 2013

ELEMENTARY SCHOOL APPLICANTS —

Catalogs will be available online and mailed home upon request.

Registration windows for KSCConnect:

- Current grade 6 students: February 3 – 6, 2013
- Current grade 4 and 5 students: February 7 – 10, 2013

- Current grades K–3 students: February 11 – 14, 2013

Families without online access may deliver their completed application to the KS Kapālama Summer School office before their assigned KSCConnect window. KSKSS staff will register these applicants during their assigned KSCConnect window. Staff cannot register students prior to their assigned KSCConnect window dates. KS students may NOT submit an application after March 15, 2013 unless required to repeat a course.

II. Non-KS Students

All forms must be postmarked by February 28, 2013, to be considered on time.

Please complete and submit the following forms:

1. 2013 Application Form
2. 2013 Medical Form

Mail or deliver your completed forms to:

Kamehameha Schools
Admissions Office
1887 Makuakāne Street
Honolulu, HI 96817

Enrollment is based on the date an application is received, the date an application is completed and grade level space/course availability. An incomplete application will delay your child’s registration; during which time, requested classes may have closed before you are able to complete the registration process.

Current KS Kapālama students are offered advanced registration. Remaining spaces will be open to students from all schools who have submitted completed applications by February 28, 2013 (postmarked).

Preference will be given to applicants of Hawaiian ancestry to the extent permitted by law. KS reserves the right to cancel any class should enrollment fall below 15 students. Detailed class schedules and bus tickets, if purchased, are mailed the last week of May.

Student with Disabilities

The Americans with Disabilities Act prohibits discrimination against individuals with physical or psychological disabilities. It is the policy of KS to make its programs, services, and activities accessible to a qualified person with a disability, unless there is a fundamental alteration in the nature of the program or service, undue hardship, or the student poses a direct threat to him or herself, or to others. A “qualified person with a disability” refers to an individual with a disability who is otherwise qualified to participate in

any given school, program, or activity.

COURSE CHANGES/WITHDRAWALS

Once registration has been completed, the following penalty fees will be assessed for course withdrawals:

- May 6 to May 19: \$25.00
- May 20 to May 27: \$100.00
- May 28 to June 3: \$200.00
- June 4 or later: full tuition charged/billed, no refund

The above fees will be charged on all course withdrawals, even for financial aid recipients. Early notification of your child’s cancellation is requested so that spaces may be filled with waitlisted students. For faster processing, please use the Course Change/Withdrawal form included at the back of this catalog. All refunds will be issued after June 24, 2013.

All requests for withdrawals and refunds must be made in writing before reimbursement will be made. Course changes will be accepted through May 3, 2013. Each change request made after May 3rd will be assessed a \$50 processing fee.

PAYMENT — ALL STUDENTS

Do not send payment with the application. By late-April all registered students will receive a confirmation letter with payment instructions. Payment must be submitted online to F.A.C.T.S. by **Friday, May 3, 2013**. Payment may be made from a savings or checking account. Most credit cards (except VISA credit cards) are accepted and will be charged a service fee. A \$25 processing fee will be charged for any payment returned by the bank or financial institution. No payments will be accepted at the Summer School Office, or by phone.

A KS student’s letter will not include any balance(s) due from school year charges and/or tuition.

FINANCIAL AID

Kamehameha students currently receiving financial aid for the 2012–2013 school year are eligible to receive financial aid funding for the summer school program and do not have to complete a Financial Aid Application.

All other students seeking financial aid must complete the 2013 Financial Aid Application for Summer School.

- There are two ways to apply: Online or paper application
- Go to www.ksbe.edu/finaid to complete the online application or use the paper version

- One application per family; multiple applicants from the same household may apply on one application
- All applications and required documents must be post-marked no later than Thursday, **February 28, 2013**.
- Use the Document Cover sheet when submitting all documents.
- LATE applications WILL NOT BE ACCEPTED.
- INCOMPLETE applications will not be considered for financial aid.
- Mail or deliver completed applications and required documents to:
Kamehameha Schools
Applicant Services Center
Attention FASS
567 South King Street, Suite 102
Honolulu, Hawai'i 96813
- For more information, contact Financial Aid and Scholarship Services at (808) 534-8080 or toll-free at 1-800-842-4682, then press 2. Visit our Web site at www.ksbe.edu/finaid or e-mail www.finaid@ksbe.edu.

Students who are awarded financial aid and later decide not to attend Summer School must notify the Summer School Office immediately to allow waitlisted students the opportunity to enroll. Parents failing to inform the Summer School Office in a timely manner, prior to or by the start of Summer School, will be given lower priority when registering for future summer programs.

ACADEMIC POLICIES

Student Evaluation and/or Credit

I. Students in Grades 1–4

Classes are for enrichment only. Credit is not awarded for grades 1–4 courses. Report cards or evaluations are not issued.

II. Students in Grades 5–8

Grades will be posted on KSCConnect. Report cards will be mailed to a parent/legal guardian's home address if they do not have access to KSCConnect. Students will receive letter grades of A–F for morning non-sports classes. Sports are graded as Pass/Fail. Students' grades will be affected if they miss more than five days of school. Grades may not be issued to students missing six or more days of class. Classes are for enrichment only. Credit is not awarded for grades 5–8 courses.

III. Students in Grades 9–12

Grades will be posted on KSCConnect. Report cards will be mailed to a parent/legal guardian's home address if they do not have access to KSCConnect. A copy of the student's grade(s) will be sent to the school the student will attend in Fall 2013, unless a hold status has been placed due to unreturned texts, library books or supplies.

Students will receive credit for successful completion of a course (D grade or better). Teachers' individual grading practices are outlined in their course summaries.

Please note change:

2-hour course (1 sem) = 1/2 KS credit or 1/2 DOE credit

4-hour course (2 sem) = 1 KS credit or 1 DOE credit

Credit courses are offered at an accelerated pace. Each day is the equivalent of approximately one-week of class instruction during the regular school year. Students who are absent more than three days will not receive credit or a grade for the course.

LUNCH SERVICE/SPECIAL DIETS

Grades 1–8 students enrolled in a full afternoon session from 12:30 p.m. – 4:00 p.m. will receive a sack lunch. Sack lunches are not available to students attending only morning classes. A sack lunch is provided for all Performing Arts Academy students grades 6–12. Grades 5–8 students staying for afternoon classes will eat their sack lunch at the Akahi Dining Hall, Building #63, from 11:45 a.m. to 12:15 p.m. Grades 1–4 students will eat their sack lunch at the KES Dining Hall, Keku'iapo'iwa Building #67. Supervision will be provided at both locations. Students with dietary restrictions must provide the Summer School Office with a doctor's note verifying a student's food allergy prior to the start of summer school.

STUDENT DRIVERS

Students driving to school must register with the High School Office (located in Bishop Hall), on the first day of school to obtain a parking permit. All parking permits are kept on file with the KS Security Office. Student drivers are expected to observe all traffic signs and notices. Failure to comply will result in the loss of campus parking privileges.

BUS TRANSPORTATION

Free Shuttle Bus Service

Bus service is provided free of charge between the campus and the Schools' Bus Terminal located at School and Kapālama Streets. Daily supervision is provided at the Terminal during the following times: 6:30 a.m. – 7:40 a.m.,

11:45 a.m. – 12:30 p.m. and 4:00 – 4:30 p.m.

Parents should not drop off their children before 6:30 a.m. Students who are not picked-up after the Terminal has closed at 12:30 p.m. or 4:30 p.m. will be taken to Hale Ola (Building #14). Parents may sign out their child by paying a \$25 after-hours fee.

Bus times from Terminal to Campus:

AM – 6:55 a.m. to 7:40 a.m. and 9:40 a.m.
PM – 11:50 a.m. and 12:20 p.m.

Bus times from Campus to Terminal:

12 p.m. and 4:00 p.m.

Bus times between Campuses:

Free shuttle bus service between classes will operate daily according to the bell schedule.

Afternoon Pick Up

The steps at Nāhi'ena'ena or the Terminal is the pickup area for grades 1–8 students with afternoon classes ending at 4:00 p.m. Parents will select pick up site on confirmation form mailed in late April. Students should be picked up no later than one half-hour after their last scheduled class. A daily \$25 fee will be charged for students who are on campus or at the Terminal after 4:30 p.m.

Country Bus Service

Students residing in the Leeward, Windward, North Shore and Hawai'i Kai areas are eligible for bus transportation service. Round-trip bus service is available to students enrolled in full morning sessions. Seats are limited. To register, please complete the bus service section on the Summer School application.

Bus fees are: \$75.00 one-way or \$150.00 round-trip.

Bus tickets are mailed with student schedules approximately seven days prior to the start of the summer session. Students must bring this ticket to school each day. Lost tickets must be replaced the following day. Tickets are issued at the Smith Office for grades 9–12 and at the respective Unit Offices for grades 1–8. A \$10 fee will be collected for each reissued ticket. **Students riding home on the country bus should not request afternoon courses since the buses depart campus at noon. Note: Buses pickup and drop off students at the bus stops listed in this section. NO ROUTE CHANGES, ALTERATIONS OR COURTESY STOPS ARE ALLOWED.**

Hawai'i Kai Bus Service

<u>Bus Stop</u>	<u>Pick Up</u>	Approximate <u>Drop Off</u>
Hawai'i Kai <i>(Park & Ride on Keāhole St.)</i>	6:35 a.m.	12:35 p.m.

Windward Bus Service

<u>Bus Stop</u>	<u>Pick Up</u>	Approximate <u>Drop Off</u>
Waimānalo <i>(City bus stop fronting Waimānalo Beach Park)</i>	6:15 a.m.	12:35 p.m.
Kailua Park <i>(Rec. Center)</i>	6:15 a.m.	12:35 p.m.
Castle Hospital <i>(Christ Church Uniting Disciples & Presbyterian's, parking lot – A.M.) / (7-11 on Kailua Road – P.M.)</i>	6:25 a.m.	12:30 p.m.
Kahalu'u <i>(Key Project)</i>	6:15 a.m.	12:45 p.m.
Kāneohe <i>(Windward Mall Macy's, lower parking area Kailua side – A.M.) / (Alaloa Street – P.M.)</i>	6:30 a.m.	12:30 p.m.

North Shore Bus Service

<u>Bus Stop</u>	<u>Pick Up</u>	Approximate <u>Drop Off</u>
Pūpūkea <i>(Pūpūkea Foodland – A.M.) / (across Foodland makai – P.M.)</i>	5:45 a.m.	1:15 p.m.
Lā'ie <i>(Shopping Center, makai)</i>	6:05 a.m.	1:00 p.m.
Hau'ula <i>(Hau'ula 7-11 store – A.M.) / (Hau'ula Beach Park – P.M.)</i>	6:15 a.m.	12:50 p.m.
Ka'a'awa <i>(Ka'a'awa 7-11 store – A.M.) / (Swanzy Beach Park – P.M.)</i>	6:25 a.m.	12:40 p.m.

Leeward Bus Service

<u>Bus Stop</u>	<u>Pick Up</u>	Approximate <u>Drop Off</u>
Wai'anae <i>(Wai'anae Mall fronting Longs – A.M.) / (Wai'anae Mall back parking lot – P.M.)</i>	6:00 a.m.	12:55 p.m.
Nānākuli <i>(Farrington Hwy. fronting Nānākuli Community Center)</i>	6:20 a.m.	12:45 p.m.
Wahi'awā <i>(California Ave., Blockbuster just before Foodland parking lot)</i>	6:05 a.m.	12:45 p.m.
Mililani <i>(Mauka side Mililani Park & Ride)</i>	6:10 a.m.	12:40 p.m.

Bus Stop	Pick Up	Approximate Drop Off
Kapolei (Rec. Center Kamaaha Loop)	6:00 a.m.	12:35 p.m.
Makakilo (Panana St. fronting LDS Church)	6:15 a.m.	12:35 p.m.
'Ewa Beach (Boys and Girls Club parking lot between 'Ilima & Pohakea Schools)	6:15 a.m.	12:45 p.m.
Waipahu (Village Park – Park & Ride Kupuna Loop)	6:30 a.m.	12:35 p.m.
Pearl City (in Pearl City Shopping Center at Foodland)	6:30 a.m.	12:30 p.m.

LIST OF SCHEDULED COURSES

Parents/legal guardians of students in grades 1–8 are encouraged to request a full morning session, for example, one 4-hour course or two 2-hour courses. To increase your child’s chances of receiving a full schedule, please provide a list of alternate courses in order of preference.

Supervision is not provided for students who are not enrolled in a full morning session. Students should be picked up as soon as their 2-hour classes are dismissed. Grades 1–8 students who do not have a full morning schedule are ineligible for round-trip bus transportation.

Students who request afternoon classes should not request afternoon bus service since buses depart the campus at noon.

ELEMENTARY SCHOOL/ENTERING GRADES 1–4

Course # / Subject	Tuition / Pg #
100 Primary Program (Grade 1)	\$340 10
105 Health, Wellness and Nutrition (Grade 1)	\$340 10
200 Primary Program (Grade 2)	\$340 10
205 Health, Wellness and Nutrition (Grade 2)	\$340 10
002 Music and Movement (Grades 3–4)	\$170 10
003 Exploring Technology 1 (Grades 3–4)	\$170 10
007 Exploring Technology 2 – Advanced (Grades 3–4)	\$170 10
008 Beginning Robotics (Grades 3–4)	\$200 10
004 He Hawai'i Au (Grades 3–4)	\$340 10
006 Ma Ka Hana Ka 'Ike (Grades 3–4)	\$170 11
300 Exploring Nature Around Us (Grade 3)	\$340 11
400 Magic School Bus Summer (Grade 4)	\$340 11

UPPER ELEMENTARY SCHOOL/ENTERING GRADES 5–6

Course # / Subject	Tuition / Pg #
500 Reading/Writing Gr 5	\$170 11
600 Reading/Writing Gr 6	\$170 11
515 Mind Benders I for Grade 5	\$170 11
516 Mind Benders II for Grade 6	\$170 11
525 Knowledge Power	\$340 12
545 Computer Applications	\$170 12
675 Beginning Robotics	\$200 12
555 Pacific Voyaging Traditions	\$340 12
557 Mālama Ka 'Āina	\$340 12
560 'O Kapālama Ka 'Āina Kū Kilakila	\$340 12
620 Life Fitness: Tumbling, Trampoline and Jump Rope	\$170 12
630 Beginning Tennis	\$170 13
640 Sports Activities	\$170 13
655 Creative Movement	\$170 13
665 Creative Arts	\$200 13
670 Kanikapila	\$170 13

MIDDLE SCHOOL/ENTERING GRADES 7–8

Course # / Subject	Tuition / Pg #
820 Creative Arts	\$200 13
755 Beginning Orchestra	\$200 13
760 Beginning Band	\$200 13
825 Media Technology	\$170 14
826 Television News Production	\$170 14
735 World Peace	\$370 14
830 The Restaurant	\$370 14
745 Mālama I Ka Wai	\$340 14
725 Math for Grade 7	\$170 14
875 Math for Grade 8	\$170 15
705 Introduction to Math 7	\$170 15
815 Introduction to Math 8	\$170 15
700 English Enrichment for Grade 7	\$170 15
800 English Enrichment for Grade 8	\$170 15
703 Creative Writing	\$340 15
840 Electricity	\$200 16
730 Middle School Science Lab	\$200 16
810 Sports Activities	\$170 16
805 Sports & Kinesiology	\$340 16

HIGH SCHOOL/ENTERING GRADES 9–12

Course # / Subject	Tuition / Pg #
9681 Core Algebra I	\$350 16
992 Algebra IB	\$175 16
906 Geometry A/B	\$350 17
9861 Geometry B	\$175 17
9906 Algebra 2A	\$175 17
9907 Algebra 2B	\$175 17
986 Concepts in Biology Lab (M/W or T/TH 12:30 – 2:30)	\$400 17
914 CHEMCOM Chemistry Lab (T/TH 12:30 – 2:30)	\$400 18
1109 CHEMS Chemistry (Grade 10) Lab (T/TH 12:30 – 2:30)	\$400 18
1110 CHEMS Chemistry (Grades 11–12) Lab (T/TH 12:30 – 2:30)	\$400 18
916 Conceptual Physics Lab (T/TH 12:30 – 2:30)	\$400 18
9683 Medical Problem Solving	\$400 18
9678 Summer Science Institute – Molecular and Cell Biology	\$400 18
930 Speech Communication	\$175 19
932 Advanced Speech Communication	\$175 19
923 Power Reading/Writing for the SAT	\$175 19
928 English 9 – Reading/Writing	\$175 20
956 Designing and Computer Drafting I	\$350 20
9682 Industrial Crafts Exploration	\$250 20
965 Introduction to Computer Technology	\$175 20
958 Personal Health	\$175 20
950 Art History, Theory and Practice	\$175 20
9905 The Multimedia Mix	\$175 21
991 Intro. to Conversational Hawaiian	\$175 21
944 Elementary Hawaiian 1	\$350 21
946 Elementary Hawaiian 2	\$350 21
948 Intermediate Hawaiian 3	\$350 21
940 Elementary Japanese 1	\$350 22
942 Elementary Spanish 1	\$350 22
972 Hawaiian Culture	\$175 22
978 World History	\$350 22
978 Global Connections World History 2014	\$350* 23

* Plus trip cost: approximately \$5000 (includes all transportation, hotels, meals, admissions and insurance)

Course # / Subject

Course # / Subject	Tuition / Pg #
9862 Global Studies: Asia – Pacific	\$175 23
976 U.S. History	\$350 23
974 Hawaiian History	\$175 23
970 Economics	\$175 24

AFTERNOON COURSES

Course # / Subject	Tuition / Pg #
9001– Performing Arts Academy 9008	\$400 24
1000 Play to Learn (Grades 1–3)	\$400 25
1060 Cultures of Hawai'i (Grades 1–2)	\$400 25
1061 Cultures of Hawai'i (Grades 3–4)	\$400 25
1080 Body and Brain Training (Grades 1–2)	\$400 25
1081 Body and Brain Training (Grades 3–4)	\$400 25
1050 Art and Sports (Grades 3–4)	\$400 25
1041 Crafts and Sports (Grades 5–6)	\$400 25
1042 Crafts and Sports (Grades 7–8)	\$400 25
1070 Sports and Nutrition (Grades 5–6)	\$450 25
1071 Sports and Nutrition (Grades 7–8)	\$450 25
1075 Technology and Strength Conditioning (Grades 5–6)	\$450 25
1076 Technology and Strength Conditioning (Grades 7–8)	\$450 25
1010 High School Fitness (P.E. 1, 2, 3, 4)	\$200 25

ELEMENTARY SCHOOL PROGRAM — ENTERING GRADES 1–4

Classes are for enrichment only. Credit is not awarded for grades 1–4 courses. Report cards are not issued.

PRIMARY PROGRAM: LET’S MOVE, LEARN AND HAVE FUN!

#100 *For students entering grade 1.*

#200 *For students entering grade 2.*

Tuition: \$340

7:45 – 11:45 a.m.

First and second grade students have a blast this summer moving, learning, and having a load of fun in our Primary Program! First, students develop good attitudes toward their bodies through fitness and games, and singing and dancing. Second, learning new language arts, mathematics, and art skills in a nurturing environment prepares students for the next level. Finally, every Friday students take field trips around the island! Students take three classes a day in one-hour blocks and are issued a Kamehameha field trip T-shirt. Classes include Fitness and Games, Music, Reading/Writing, Math, and Art.

HEALTH, WELLNESS AND NUTRITION

#105 *For students entering grade 1.*

#205 *For students entering grade 2.*

Tuition: \$340

7:45 – 11:45 a.m.

First and second grade students will enjoy activating their brains and bodies as they learn about personal health. In a rotation through four classes, students will study physical, social, emotional, intellectual, spiritual and environmental lessons designed to engage their brains and bodies as they learn to live healthy. This 4-hour course involves academic and physical energy.

MUSIC AND MOVEMENT #002

Tuition: \$170

7:45 – 9:35 a.m. or 9:55 – 11:45 a.m.

For students entering grades 3–4.

Participants will experience music through singing, instrument playing and creative movement. Students will develop fundamentals and appreciation for music and dance, respect for other cultures, global awareness and the joy of music making.

EXPLORING TECHNOLOGY 1 #003

Tuition: \$170

7:45 – 9:35 a.m. or 9:55 – 11:45 a.m.

For students entering grades 3–4.

This 2-hour class is an introductory course to technology. Students will be introduced to word processing, digital animation, PowerPoint and internet proficiency. Enrollment is limited to 20 students.

EXPLORING TECHNOLOGY 2 – ADVANCED #007

Tuition: \$170

7:45 – 9:35 a.m. or 9:55 – 11:45 a.m.

For KES students entering grades 3–4 and students who have completed Exploring Technology 1 during the previous KSKSS session.

This 2-hour course will focus on extending the knowledge and technology skills taught at KES or in the Exploring Technology 1 course. Students will further develop their technology and multi-media skills through the use of digital camera technology, digital video technology, paint software, Microsoft Office Suite, Apple’s i-Life Suite and web design software.

BEGINNING ROBOTICS #008

Tuition: \$200

7:45 – 9:35 a.m. or 9:55 – 11:45 a.m.

For students entering grades 3–4

This is a hands-on problem solving course where students will design and build robots. Students will apply their knowledge of mechanics, electricity, mathematics, logic and computer programming. Students enrolled in this course are expected to spend additional time outside of class to complete projects.

HE HAWAI’I AU (I AM HAWAIIAN) #004

Tuition: \$340

7:45 – 11:45 a.m.

For students entering grades 3–4.

How do keiki get excited about their Hawaiian heritage? This 4-hour program will introduce third and fourth grade keiki to Hawaiian chant and dance, conversation, arts and crafts and stories. This program is designed to nurture our keiki through hands-on learning, movement and multiple intelligence learning. Students will attend four classes: Hula (chant and dance), ‘Ōlelo Hawai’i (Hawaiian conversation), Hana No’eau (arts and crafts) and Mo’ōlelo (stories). Keiki will also attend field trips to enhance their classroom experience and perform in an end-of-summer performance.

MA KA HANA KA 'IKE (ONE LEARNS BY DOING) #006

Tuition: \$170

7:45 – 9:35 a.m. or 9:55 – 11:45 a.m.

For students entering grades 3–4.

This course is designed to provide motivated learners opportunities to explore the process of inquiry in a lab setting. The focus of the class is active participation and direct experience with materials. The content of the course is centered on science. Each year, the course covers a different area of science including life science, earth science and physical science. Students may repeat the course. They will use skills and strategies they have already developed in an integrated study of science in their world. They will communicate their discoveries through written and visual arts in creating a journal, completing homework assignments and a class project.

GRADE 3: EXPLORING NATURE AROUND US #300

Tuition: \$340

7:45 – 11:45 a.m.

For students entering grade 3.

Take a trip around the world via core curricular subjects designed to expose students entering grade three to a multitude of cultures, values, and skills. Language arts, mathematics, science, and art courses are created to challenge students with new curriculum and enhance skills. Students will also learn and reinforce problem solving, teamwork and study skills in a nurturing environment. Field trips to the Sumida Watercress Farm and to Waimānalo Beach Park help to integrate the four courses. Students take two classes a day in 2-hour blocks. Classes include Reading/Writing, Math, Science, and Art. For enrichment only, no grades or evaluations issued.

GRADE 4: MAGIC SCHOOL BUS SUMMER #400

Tuition: \$340

7:45 – 11:45 a.m.

For students entering grade 4.

Come and enjoy a Magic School Bus Summer! Fourth grade courses are integrated and centered on the Magic School Bus books. Using this popular educational series, teachers draw upon themes, concepts, vocabulary, and situations to enhance student learning. Not only will learning be enriched by Magic School Bus curricular themes, but students will also learn and reinforce problem solving, teamwork and study skills in a nurturing environment. Students take two classes a day in 2-hour blocks which include Reading/Writing, Math, Science, and Art.

UPPER ELEMENTARY SCHOOL — ENTERING GRADES 5–6

The middle school classes for grades 5–8 will provide instruction in a wall-less learning environment that will optimize Hawaiian cultural knowing and understanding, 21st century learning skills, and middle school promising practice. Classes are for enrichment only. Credit is not awarded for grades 5–8 courses.

READING/Writing FOR GRADE 5 #500

Tuition: \$170

7:45 – 9:35 a.m. or 9:55 – 11:45 a.m.

Not recommended for students in need of remedial instruction.

For students entering grade 5 who want to expand and enrich their reading and writing skills. Emphasis is on developing a positive attitude towards reading through creative activities. Prewriting, drafting, revising, editing, and publishing skills will also be taught as part of the writing process. Students should be reading at or above their grade level. Homework will be assigned.

READING/Writing FOR GRADE 6 #600

Tuition: \$170

7:45 – 9:35 a.m. or 9:55 – 11:45 a.m.

This course will focus on the tools that students entering grade 6 need to achieve success in reading and writing. Students will improve their reading comprehension through an exposure to a variety of literature and will also explore various types of writing such as narrative, persuasive, informative, and experience the expression of feelings that make up a poem. Students should be reading at or above their grade level. Homework will be assigned.

MIND BENDERS, WORD GAMES, AND PUZZLE-SOLVING

#515 *For students entering grade 5: Mind Benders I.*

7:45 – 9:35 a.m.

#516 *For students entering grade 6: Mind Benders II.*

9:55 – 11:45 a.m.

Tuition: \$170

Not recommended for students in need of remedial instruction.

A great way to develop problem-solving techniques and word knowledge in a fun and interesting environment. Students will learn logical approaches to solving word and math problems in a non-threatening and entertaining game

like environment. The techniques, which include strategies from the Singapore Math curriculum, can be used in a variety of classes encountered during the course of the regular school year to improve a student's performance. **Students must have strong arithmetic skills to keep up with the pace of the course.** Homework will be assigned.

KNOWLEDGE POWER #525

Tuition: \$340

7:45 – 11:45 a.m.

The course is designed for students in grades 5 and 6 wanting to improve and enhance their reading, writing and math skills with a literary project based approach. Students will explore literature with a Pacific and Asian theme, discover math in everyday life and writing for real world purposes. Not only will they learn the skills necessary to prepare them for the next grade level, but they will also have a fun time doing it! There are three exhilarating field trips planned for the five week course where students will put into use relevant information gained in class. Explore and learn in this exciting course.

COMPUTER APPLICATIONS #545

Tuition: \$170

7:45 – 9:35 a.m. or 9:55 – 11:45 a.m.

This class is designed to challenge students having prior computer experiences similar to Beginning Computer Applications course. The course will include more challenging applications of desktop publishing, webbing and outlining, file access and retrieval, spreadsheets and charts, downloading pictures from a digital camera, multimedia project development, internet use and internet safety, basic web page development, and keyboarding. Students will learn computer skills that will serve as a resource for their more demanding schoolwork. Homework will be given throughout the course.

BEGINNING ROBOTICS #675

Tuition: \$200

7:45 – 9:35 a.m. or 9:55 – 11:45 a.m.

This is a hands-on problem solving course where students will design and build robots. Students will apply their knowledge of mechanics, electricity, mathematics, logic and computer programming. Students enrolled in this course are expected to spend additional time outside of class to complete projects.

PACIFIC VOYAGING TRADITIONS #555

Tuition: \$340

7:45 – 11:45 a.m.

This course will focus on Pacific traditions as they relate to Polynesian voyaging and navigation. Voyaging and navigation from the past and present will be the highlight of the summer. Voyaging canoes will be used as a vehicle for an integrated cultural curriculum. This is an enrichment course where grade level reading, writing and cooperative group skills are necessary. Hands on field experiences are incorporated into this program to enhance classroom learning. An awareness of the values found in our Pacific culture will be emphasized throughout the summer and students will leave with a better understanding of how their ancestors grew and prospered.

MĀLAMA KA 'ĀINA (CARING FOR THE LAND) #557

Tuition: \$340

7:45 – 11:45 a.m.

At the core of our Hawaiian values is the concept of caring for the land. This 4-hour course will explore traditional Hawaiian culture practices and show their relation to modern scientific principles. Keiki will evaluate and find possible solutions for local environmental problems through various skills learned in a daily three class rotation: science, math and Hawaiian culture. The skills learned will assist them in solving these difficult problems that face Hawai'i today. Field trips and daily homework will further enhance student learning.

'O KAPĀLAMA KA 'ĀINA KŪKILAKILA (MAJESTIC IS THE LAND OF KAPĀLAMA) #560

Tuition: \$340

7:45 – 11:45 a.m.

The 4-hour course emphasizes the ahupua'a of Kapālama, the current site of the Kamehameha Schools. The students will learn about the legacy and history of the schools, it's founder, Princess Bernice Pauahi Bishop, as well as the geographic information pertaining to the ahupua'a. Each student in the course will rotate through three classes: 'ōlelo Hawai'i (Hawaiian Language), hula (including oli and mele) and mo'olelo (stories)/'epekema (science). At the end of the five week session, students will have a culminating event to showcase their work.

LIFE FITNESS: TUMBLING, TRAMPOLINE AND JUMP ROPE #620

Tuition: \$170

7:45 – 9:35 a.m. or 9:55 – 11:45 a.m.

Students will learn the basics of tumbling, trampoline, scarf juggling and jump rope. The focus of this class is establishing a healthy lifestyle and achieving fitness through bouncy fun activities. Students will work on the five components of fitness with various activities. The five components of fitness are cardiovascular endurance, muscular strength, muscular endurance, flexibility and body composition.

BEGINNING TENNIS #630

Tuition: \$170

7:45 – 9:35 a.m. or 9:55 – 11:45 a.m.

Students will learn the game of tennis, the rules, etiquette, and the different strokes. Tennis games will be played within instructional groups. Racquets and balls are provided. However, students may bring their own racquet. Group instruction will emphasize fun and good sportsmanship.

SPORTS ACTIVITIES #640

Tuition: \$170

7:45 – 9:35 a.m. or 9:55 – 11:45 a.m.

Students improve their skills in team and individual sports in the following sports activities: racquetball, basketball, flag football, soccer and volleyball. Emphasis is placed on sportsmanship and an individual's contribution to team success.

CREATIVE MOVEMENT: EXPLORATION OF DANCE AND DRAMA #655

Tuition: \$170

7:45 – 9:35 a.m. or 9:55 – 11:45 a.m.

This course is an exploration in the intricacies of dance and drama. Students will be expected to perform independently as well as in groups. Students will use higher order thinking as they describe, analyze, interpret and reflect on their own performances and respond to the performances of others. In order to assess and evaluate students' learning, responses will take various forms including physical, verbal and written formats. This course is designed to refine students' observational skills, build cooperation and practice the creative process while having fun. A special performance will be held at the end of the summer to highlight student learning.

CREATIVE ARTS #665

Tuition: \$200

7:45 – 9:35 a.m. or 9:55 – 11:45 a.m.

Explore several cultures through their arts and crafts: Japanese, Chinese, Indian, Native American, Aboriginal Australian, Hawaiian and more. Gain experience using different tools and materials to create cultural objects. Students

will draw, paint, print, weave and explore sculpture.

KANIKAPILA #670

Tuition: \$170

7:45 – 9:35 a.m. or 9:55 – 11:45 a.m.

For students who enjoy singing and love Hawaiian and other music. Students will develop their singing skills and learn basic choral fundamentals. Spontaneous music making kanikapila style will also be included. No rehearsals outside of class time will be required.

MIDDLE SCHOOL PROGRAM — ENTERING GRADES 7-8

The middle school classes for grades 5–8 will provide instruction in a wall-less learning environment that will optimize Hawaiian cultural knowing and understanding, 21st century learning skills, and middle school promising practice. Classes are for enrichment only, credit is not awarded for grades 7–8 courses.

CREATIVE ARTS #820

Tuition: \$200

7:45 – 9:35 a.m. or 9:55 – 11:45 a.m.

Students will gain an understanding of basic art concepts and be exposed to a variety of media. Techniques and proper use of materials will be emphasized. Students will work on projects in drawing, painting, and sculpture.

BEGINNING ORCHESTRA #755

Tuition: \$200

7:45 – 9:35 a.m. or 9:55 – 11:45 a.m.

Students will learn to read music and play a violin, viola, cello or bass. Instruction emphasizes position, tone development, technical development and basic theory. Tuition includes the use of a school instrument. Students must purchase their own accessories. This class is designed for the student who has little or no previous experience with string instruments.

BEGINNING BAND #760

Tuition: \$200

7:45 – 9:35 a.m. or 9:55 – 11:45 a.m.

Students will learn to play a brass, woodwind or percussion instrument. Instruction emphasizes the development of the fundamental playing skills: basic fingerings, basic tonal concepts, music reading, ear training, elementary technical playing knowledge, and beat competency. Open to students entering grades 7–8, with no band experience.

Tuition includes the use of a school instrument. Students must purchase their own mouthpiece and accessories.

MEDIA TECHNOLOGY #825

Tuition: \$170

7:45 – 9:35 a.m. or 9:55 – 11:45 a.m.

For current Kamehameha students only.

Students will gain exposure to and make progress toward proficiency in using digital media to create projects. Students will also learn to use specific computer applications included in the Apple iLife package: Garageband, iMovie, iTunes as well as Comic Life, Photoshop and Microsoft Office's Power Point and Word. Students will work individually as well as in teams to create digital projects including, but not limited to, videos and movies.

TELEVISION NEWS PRODUCTION #826

Tuition: \$170

7:45 – 9:35 a.m. or 9:55 – 11:45 a.m.

For current Kamehameha students only.

Want to be a part of the most up-to-date news? This course is designed to enrich students' knowledge related to television news production in five areas: 1) Video Camera Use, 2) Video Editing, 3) Producing, 4) Directing, and 5) Reporting. A "hands-on" approach will be used to develop an understanding and apply practical skills used in each area of television news. By the end of this enrichment class, students will have created a portfolio of their written and video work.

WORLD PEACE #735

Tuition: \$370

7:45-11:45 a.m.

In this course, students will take part in a global simulation where they assume the roles of diplomats, heads of office, national defense, energy and resource administrations and other vital positions in maintaining a country. Students will review and practice mathematics leading into the further study of Pre-Algebra in order to craft solutions and documentations vital to securing World Peace. The curriculum will include a study of ratios and proportions; using variables, solving equations and word problems; studying patterns; analyzing data through statistics and graphs; all while attempting to avert a global catastrophe and attain world peace.

THE RESTAURANT #830

Tuition: \$370

7:45 – 11:45 a.m.

This course will allow students to create, promote and operate an actual restaurant for the summer. In the creation portion of the restaurant, students will learn about the history of many wonderful culturally diverse foods we have here in Hawai'i and the health benefits present in each specific food group used. During the promotion portion, students will investigate the marketing and business aspect of a food establishment, including budget and costs. Finally, in the operation stage, students will get the chance to master the recipes they have practiced all summer by preparing, cooking and presenting the foods they have created during the "Restaurant Opening".

MĀLAMA I KA WAI #745

Tuition: \$340

7:45 – 11:45 a.m.

Mālama i ka wai, to care for or protect the waters, is a course designed for students who have a desire to learn about Hawai'i's unique watershed system through science, Hawaiian language and Hawaiian culture. Participation in huaka'i or field trips will help students gain a greater appreciation for the unique natural world they live in and their kuleana to sustain it. Through this introductory Hawaiian language course, students will learn valuable language skills necessary to incorporate appropriate vocabulary and sentence structure to oral presentations and visual project models.

MIDDLE SCHOOL MATHEMATICS

The Kamehameha Middle School Program is designed to provide students with several opportunities for math enrichment courses. Each course provides 2 hours of classroom instruction with additional homework assignments. None of these courses are designed for credit or advancement. The enrichment courses are structured to meet the needs of the student entering grades 7 and 8.

MATH FOR GRADE 7 #725

Tuition: \$170

7:45 – 9:35 a.m. or 9:55 – 11:45 a.m.

Students should be entering grade 7, no minimum grade requirement.

For enrichment only, not for advancement.

This course is designed for students entering grade 7 who wish to improve their math skills. The curriculum will range

from basic mathematical topics such as performing basic operations with fractions, decimals, and percents; making graphs; working with positive and negative numbers; number lines; simple equations and transformational geometry. Students will be tested on the first day of class to determine their appropriate level for instruction. This course is for enhancement, not for credit. Nevertheless, students will be required to complete homework daily to reinforce learned concepts.

MATH FOR GRADE 8 #875

Tuition: \$170

7:45 – 9:35 a.m. or 9:55 – 11:45 a.m.

Prerequisite: *Students should be entering grade 8, no minimum grade requirement.*

For enrichment only, not for advancement.

This course is designed for students entering grade 8 who wish to reinforce their basic math skills. The curriculum will range from basic mathematical content to enrichment concepts such as solving two-step equations, simplifying expressions, working with percents, performing statistical analysis, scientific notation, and using a scientific calculator. This course is for enhancement, not for credit.

INTRODUCTION TO MATH 7 #705

Tuition: \$170

7:45 – 9:35 a.m. or 9:55 – 11:45 a.m.

Prerequisite: *Course is exclusively for KMS students who have received written recommendation from KS.*

For enrichment only, not for advancement.

This course is designed to allow for a smooth math transition for students entering Kamehameha Middle School. The curriculum will cover a review, practice and exposure to the essential concepts of mathematics which include: fractions, decimals, percents, integers, ratios and proportions; using variables, solving equations and word problems; studying patterns; and analyzing data through statistics and graphs. Curriculum resources will include the integration of technology including the use of laptops. Homework is assigned daily.

INTRODUCTION TO MATH 8 #815

Tuition: \$170

7:45 – 9:35 a.m. or 9:55 – 11:45 a.m.

Prerequisite: *Course is exclusively for KMS students who have received written recommendation from KS.*

For enrichment only, not for advancement.

This course is designed to enhance student success in Mathematics 8 at Kamehameha Middle School. The curriculum will cover a review, practice and exposure to the essential concepts of mathematics which include: working with variables, positive and negative numbers and polynomials; solving equations and inequalities; graphing; linear equations and functions; and problem solving. Homework is assigned daily, therefore regular attendance is very important. Curriculum resources will include the integration of technology including the use of laptops.

READING AND WRITING SKILLS

ENGLISH ENRICHMENT FOR GRADE 7 #700

Tuition: \$170

7:45 – 9:35 a.m. or 9:55 – 11:45 a.m.

Recommended for students functioning at their grade level.

This course is designed for students looking to explore reading and writing and to develop critical thinking skills. Also includes grammar review, writing for different purposes, practicing comprehension strategies and researching. Homework will be assigned.

ENGLISH ENRICHMENT FOR GRADE 8 #800

Tuition: \$170

7:45 – 9:35 a.m. or 9:55 – 11:45 a.m.

Recommended for students functioning at their grade level.

This course is designed for students to read and think critically about the various media that they encounter daily. Using a combination of traditional and non-traditional texts to draw comparisons and gain a better understanding of their world. Focus will be on skills that reinforce those taught in Language Arts such as reading strategies, written composition, persuasive technique, point-of-view, audience, evaluating sources and distinguishing between fact and opinion. Homework will be assigned.

CREATIVE WRITING #703

Tuition: \$340

7:45 – 11:45 a.m.

This 4-hour enrichment course is **fast-paced** and designed for students who have **strong skills in Language Arts** and an interest in writing creatively. Students will be exposed to many genres of creative writing including: fairy tales, autobiography, historical fiction, mystery, poetry, and journalism. Homework will be assigned. Computer knowledge and typing skills are helpful.

SCIENCE

ELECTRICITY #840

Tuition: \$200

7:45 – 9:35 a.m. or 9:55 – 11:45 a.m.

This course introduces the student to the modern science of electricity. A hands-on project based approach to learning will be taken in the lab where students will build projects representative of the theory studied in class. Classroom studies will include topics such as safety, sources of electricity, circuit fundamentals, magnetism, and measurement. Upon completion, students will be able to take their projects home to share with their family.

MIDDLE SCHOOL SCIENCE LAB #730

Tuition: \$200

7:45 – 9:35 a.m. or 9:55 – 11:45 a.m.

Can you carry a box that weighs 1,000 grams? Can you run faster than a chicken? Do you react faster to sight or sound? Can you safely land a raw egg? These are just a few of the exciting questions that you will answer in the Middle School Science lab. Through this course, students will develop their inquiry skills through daily activities that challenge their critical thinking. Students will use technology to analyze their data and create reports based on their results. Finally, as a means of monitoring personal growth, students will keep reflections of their successes and challenges from their journey through this course.

SPORTS

SPORTS ACTIVITIES #810

Tuition: \$170

7:45 – 9:35 a.m. or 9:55 – 11:45 a.m.

Students learn to improve their skills in team and individual sports including racquetball, basketball, softball, flag football, soccer and volleyball. Emphasis is placed on sportsmanship and individual contribution to team success.

SPORTS & KINESIOLOGY #805

Tuition: \$340

7:45 – 11:45 a.m.

This course is designed for any student who is interested in learning and improving physically and intellectually in sports. Sports kinesiology will prepare students for participation in school athletic programs and recreational sports activities. This 4-hour series is designed to introduce grade 7 and 8 students to a strength and conditioning program where students will learn weight training and conditioning

techniques that will promote proper safety practices. The kinesiology lab will help to develop understanding of specific muscle groups and motions of the body particular to sports activities practiced. Finally, students will apply strength and conditioning and kinesiology information gained to enhance performance in team and individual sports including racquetball, basketball, flag football, soccer and volleyball.

HIGH SCHOOL — ENTERING GRADES 9–12

Credit courses are offered at an accelerated pace, with each day being the equivalent of approximately a week of class during the regular school year. **Students who are absent more than three days will not receive credit for the course.**

MATHEMATICS

CORE ALGEBRA #9681

Tuition: \$175

7:35 – 9:30 a.m. or 9:50 – 11:45 a.m.

This course is the first of the three-course sequence in Algebra 1 in the KS math program and is designed for students who have completed either Pre-Algebra, grade 8 or KMS Math 8 coursework. Course topics include a review of real numbers and operations, properties of real numbers, absolute value and symbols. Other topics include the functional connectives “or” and “and”, estimation techniques, probability and odds, basic matrix operations and solving single variable linear equations and inequalities.

Note: For KS students, Core Algebra taken in Summer School does fulfill the prerequisite for Algebra 1A with a teacher recommendation. KS graduation credit received upon satisfactory completion.

ALGEBRA

ALGEBRA 1B #992

Tuition: \$175

7:35 – 9:30 a.m. or 9:50 – 11:45 a.m.

Prerequisite: Completion of coursework in Algebra 1A with KS teacher recommendation.

This course develops student understanding of non-linear relationships and is the final course in the Algebra 1 sequence. Topics include exponents and exponential functions, quadratic equations and functions, polynomials and factoring, and rational equations and functions.

Note: For KS students, Algebra 1B taken in Summer School fulfills the prerequisite for entry to Geometry A with

a teacher recommendation. KS graduation credit received upon satisfactory completion.

GEOMETRY A/B #906

Tuition: \$350

7:35 – 11:45 a.m.

Prerequisite: *Completion of coursework in Algebra 1A/1B and sophomore standing. KS grade 9 students may enroll to preview course but will not receive math credits to advance.*

This course covers both semesters of Geometry. Basic terms, axioms and theorems will be used in formal mathematical proofs to verify results and give training in the use of deductive reasoning. The properties of parallel and perpendicular lines and of congruent and similar triangles will be explored. Geometric properties of plane and solid figures will be investigated.

Note: For KS students (not grade 9), Geometry A/B taken in Summer School fulfills the prerequisite for Algebra 2A/2B with a teacher recommendation. KS graduation credit received upon successful completion.

GEOMETRY B #9861

Tuition: \$175

7:35 – 9:30 a.m. or 9:50 – 11:45 a.m.

Prerequisite: *Completion of coursework in Geometry A with KS teacher recommendation to enroll. Not for KS grade 9 students.*

This course covers the second semester of Geometry. Properties of polygons, circles, similar triangles and polygons, the application of the Pythagorean Theorem, will be explored. Geometric properties of planes and solid figures will also be explored through perimeter, surface area, and volume. Proficiency in Algebra 1 is required because many of the geometry problems are done by setting up and solving equations. It is also recommended that students have a scientific calculator.

Note: For KS students (not grade 9), Geometry B taken in Summer School fulfills the prerequisite for Algebra 2A/2B with a teacher recommendation. KS graduation credit received upon successful completion.

ALGEBRA 2A #9906

Tuition: \$175

7:35 – 9:30 a.m. Only

Prerequisite: *Completion of Algebra 1B, completion of Geometry A/B, and teacher recommendation.*

Colleges require this course for students who expect to

enroll in physical or social sciences, engineering or mathematics. It is strongly recommended for all students planning to apply to highly selective academic institutions. Topics covered are number systems and properties, linear functions and graphs, linear and absolute value inequalities, operations of polynomials, systems of equations, simplifying exponential and radical expressions and solving radical equations. Access to a scientific calculator is required; TI-83+ or TI-84 graphing calculator is optional.

Note: Every student registering for Algebra 2A will be required to complete a set of review modules covering Algebra 1 topics prior to entering the course. The review modules can be accessed online and provide students a chance to recall and practice solving problems covered in Algebra 1. Completion of the review also helps the student build an awareness of and sense of confidence for starting Algebra 2A. An Algebra diagnostic test will be given in the first week of the course to identify student ability in Algebra 1.

ALGEBRA 2B #9907

Tuition: \$175

9:50 – 11:45 a.m. Only

Prerequisite: *Completion of coursework in Algebra 2A with KS teacher recommendation to enroll.*

This course covers the second semester of Algebra 2 and develops student's understanding of functions. Topics covered include polynomial functions, exponential and logarithmic functions, rational functions and properties and attributes of functions.

Note: For KS students, Algebra 2B taken in Summer School fulfills the prerequisite for College Algebra and Trigonometry with a teacher recommendation. KS graduation credit received upon satisfactory completion.

SCIENCE

CONCEPTS IN BIOLOGY #986

Tuition: \$400

7:35 – 11:45 a.m.

For current Kamehameha students.

There is a 2-hour lab period on Tuesdays and Thursdays or Mondays and Wednesdays from 12:30 to 2:30 p.m.

This course provides a modern approach to discovering more about living organisms and their interactions with the environment. Observation, measurement, organization and analysis of quantitative data will be stressed in lab activities. In addition to the text, supplementary scientific

literature, audio visual aids, and computer programs are an integral part of the course.

CHEMCOM CHEMISTRY #914

Tuition: \$400

7:35 – 11:45 a.m.

Prerequisite: For current Kamehameha students entering grades 10–12. C grade or better in Algebra 1.

There is a 2-hour lab period on Tuesdays and Thursdays from 12:30 to 2:30 p.m.

This is a laboratory course designed for those students who do not intend to major in science or a science-related field. The course covers the fundamental concepts of chemistry and how they relate to our daily environment. Emphasis is placed on “hands on” activities, which demonstrate the impact of chemistry on society.

CHEMS CHEMISTRY

#1109 For current Kamehameha students entering grade 10.

#1110 For current Kamehameha students entering grades 11–12.

Tuition: \$400

7:35 – 11:45 a.m.

Prerequisite: Grades 10–12. C grade or better in Algebra 1.

There is a 2-hour lab period on Tuesdays and Thursdays or Mondays and Wednesdays from 12:30 to 2:30 p.m.

This laboratory science is strongly recommended for students who are interested in becoming medical doctors, nurses, engineers or any other type of professional scientists. The course shows how one observes, classifies, and explains matter and the reactions matter undergoes. The atomic model is explained and developed throughout the course with emphasis on student experiences in the laboratory.

Required Purchase: Laboratory Manual and Notebook — approximately \$15. Students are expected to own a scientific calculator.

CONCEPTUAL PHYSICS #916

Tuition: \$400

7:35 – 11:45 a.m.

For current Kamehameha students.

There is a 2-hour lab period on Tuesdays and Thursdays from 12:30 to 2:30 p.m.

This course uses the Conceptual Physics textbook. It offers a variety of physics activities for both mathematically oriented and non-mathematically oriented students. Student involvement is heavily emphasized. Topics studied include motion, energy, relativity, electricity, waves and light. This course should be of benefit to anyone who is curious about the way the universe works.

MEDICAL PROBLEM SOLVING #9683

Tuition: \$400

Dates: TBA

7:35 – 11:45 a.m.

For current Kamehameha students entering grades 11–12.

The JABSOM Medical Problem Solving program is an intense three-week program offered at John A. Burns School of Medicine (JABSOM) for Kamehameha Schools Kapālama Campus juniors and seniors interested in health-care. Students participate in the activities and assignments required of first year medical students. Additionally, students are exposed to the perspectives of current medical students and practicing physicians relative to career choices in the various health fields.

Half an elective science credit awarded. Students selected by KS Science Dept. Chair and faculty.

For more information please contact Ms. Campbell at 842-8838.

KAMEHAMEHA SCHOOLS SUMMER SCIENCE INSTITUTE

Kamehameha Schools Summer Science Institute is designed to take a small number of motivated Kamehameha Schools Kapālama students interested in science as a possible career through a concentrated 7-week course. If accepted you will earn one honors credit for participating in this program. You may earn additional honors credit during the school year by enrolling in Honors Science Research as an elective and working with a teacher/mentor who will help you continue your project and support your entry in the school, district, state and national science fairs. Other benefits include being more competitive for admission to selective colleges and universities, scholarships and national awards. Tuition is \$400 for accepted students; morning country bus may be added for \$75.

Students will be selected based on factors such as academic ability, grades, teacher recommendations, laboratory skills, critical thinking skills, and interest in science research. Courses are not available in KSConnect, contact individual instructors for their application forms.

MOLECULAR AND CELL BIOLOGY: RECOMBINANT DNA AND CELL CULTURE TECHNOLOGY #9678

Tuition: \$400

Wednesday, June 5 – Wednesday, July 24, 2013

7:45 a.m. – 2:30 p.m., Monday – Friday

Please note: Tuesday, June 11 is a regular class day. Bus service will not be available until June 10 and ends July 19. Classes will not be held on Thursday, July 4.

Prerequisites: For current KS Kapālama students entering grades 10–12 only. Completion of *Molecular and Cell Biology Application and Essay*, teacher recommendation and transcripts.

Deadline: Friday, February 15, 2013

Please submit applications directly to Miss Ishimoto in Paki 308 or Paki Office.

Selected students will earn 1 Honor Science Research credit as they explore the frontiers of biological, biomedical and biotechnical science. Students will isolate and analyze DNA from bacteria, plants, and mammalian cells, and they will create, clone and characterize recombinant DNA molecules. Students will interpret DNA fingerprints commonly used in forensics, analyze complex mixtures of proteins by polyacrylamide gel electrophoresis and chromatography, and detect and evaluate the activity of enzymes and other important biomolecules by spectrometry and immunoassays. Mammalian cell cultures (normal and cancer cell lines) will be studied and applied to the evaluation of cell growth and morphology, and to determine the cytotoxicity of common and exotic natural chemicals. These basic techniques will then be applied to more advanced topics in biotechnology such as the use of the polymerase chain reaction (PCR) to detect specific genes involved in human diseases, sequencing of genes, and gene expression and regulation. Students will sequence part of their own DNA and will explore the genomes of plants, marine organisms, and humans using bioinformatics tools. Field trips will include tours of basic, applied and clinical research laboratories at the University of Hawai'i Cancer Research Center, Center for Microbial Oceanography, Hawai'i Institute of Marine Biology, and private laboratories. Students will apply the skills learned in this course to design and conduct their own original research projects in any field of biology, such as medicine, forensics, agriculture, wildlife conservation, and marine biology. They will begin their projects in the summer and may continue to pursue the objectives of that proposal in the Honors Science Research Program during the regular school year.

For more information please contact Miss Ishimoto at 843-3392 or gaishimo@ksbe.edu.

SPEECH

SPEECH COMMUNICATION #930

Tuition: \$175

7:35 – 9:30 a.m. or 9:50 – 11:45 a.m.

Prerequisite: Successful completion of *KS Speech 8*, or *Kamehameha students entering grades 9 or 10 and teacher recommendation*.

This course is designed to develop basic communication skills including the ability to: think critically, research for speech information, organize material appropriately for oral presentation, communicate with clarity and confidence, and politely listen for understanding. Students will also gain an understanding of the communication process with an emphasis on the mutual responsibility of the speaker and the listener. Speaking experiences include informal activities and informative speeches.

ADVANCED SPEECH COMMUNICATION #932

Tuition: \$175

7:35 – 9:30 a.m. or 9:50 – 11:45 a.m.

Prerequisite: *Speech Communication*. Open to *Kamehameha students entering grades 11 and 12*.

This course is designed to expand student skills in critical thinking and listening, research and organization, and speaking. While this course emphasizes persuasive speaking and research, other experiences may include informative and persuasive speaking, small group discussion, job and personal interviewing, interpretation of literature and Public Forum debate.

POWER READING/Writing FOR THE SAT #923

Tuition: \$175

7:35 – 9:30 a.m. or 9:50 – 11:45 a.m.

Open to students entering grades 10–12.

Students will practice both critical reading and writing in the different academic disciplines they will encounter on the SAT and in college. Students will improve reading comprehension, retention and speed by identifying patterns and relationships between concepts used by authors of nonfiction literature. Vocabulary practice will foster an understanding and appreciation of words from different language groups and enable students to accelerate their vocabulary building. Students will use these techniques to focus and organize their own compositions representing the different rhetorical modes required by college professors and encountered on the SAT: personal narrative,

descriptive essay, thesis-subpoint essay, and summary/response.

Note: This credit course is designed to supplement the regular English Program and may not be used to fulfill a required English course at **any** grade level.

ENGLISH 9 — READING/WRITING #928

Tuition: \$175

7:35 – 9:30 a.m. or 9:50 – 11:45 a.m.

Highly recommended for new invitees to KS.

Students will learn a variety of techniques that reinforce basic reading and writing skills needed for English 9 and beyond. Emphasis will also be placed on reinforcing good study habits. Curriculum includes studying basic literary genre such as: the short story, poetry, drama, and the novel, as well as learning special strategies and approaches to the literature. Enrichment activities include individual/group projects and games that encourage cooperative as well as collaborative learning.

Note: This credit course is designed to supplement the regular English Program and may not be used to fulfill a required English course at **any** grade level.

TECHNOLOGY AND BUSINESS PRACTICES

DESIGNING AND COMPUTER DRAFTING (CADD) 1 #956

Tuition: \$350

7:35 – 11:45 a.m.

Open to students entering grades 9–12.

This course uses principles of mechanical design and graphic design as a technical language. Students will experience sketching, presentation layout and technical drawing using both mechanical and computer generated techniques as communication tools. The AutoCadd (CADD) computer program will be used to enhance and improve both presentation and computer designing techniques. This course is a prerequisite for courses in engineering and architecture offered at the college level.

INDUSTRIAL CRAFTS EXPLORATION #9682

Tuition: \$250

7:35 – 9:30 a.m. or 9:50 – 11:45 a.m.

Open to students entering grades 9–12.

This hands-on class is designed for the student who wants to explore a variety of courses in the field of technology. Students will create projects using material such as leather,

plastic, wood and metal. Basic automotive and electronic concepts may also be explored through exercises and lab activities.

Note: Students earn half a general elective credit.

INTRODUCTION TO COMPUTER TECHNOLOGY #965

Tuition: \$175

7:35 – 9:30 a.m. or 9:50 – 11:45 a.m.

Open to students entering grades 9–12.

In this course students will learn proper computer skills and to succeed as a 21st century learner. Students will have an opportunity to develop their keyboarding skills and utilize various programs to produce high quality documents and presentations. The students will have access to these special features through a modern computer lab fully equipped for their learning needs. At the completion of the course, students will be tested for competency rates and if successful will be given credit for their keyboarding requirement for graduation at the 9–12 Grade level.

PHYSICAL EDUCATION

PERSONAL HEALTH #958

Tuition: \$175

7:35 – 9:30 a.m. or 9:50 – 11:45 a.m.

Personal Health is a dynamic course designed to meet various needs of teenagers. Units of study include personal relationships, values, sexuality, nutrition, diabetes and substance abuse as they relate to today's teens. Information is taught to students in a variety of ways. Students are viewed as active learners with a wealth of thoughts, opinions and questions waiting to be unleashed via an active approach. Much of the learning occurs within the context of cooperative groups. Students assume a major responsibility for their own learning. Students are assessed on their ability to apply the information and skill they have learned to integrated projects. Career possibilities include public health work, counselor, social work, Peace Corps, non-profit health organizations, military, nutritionist and food related occupations.

VISUAL ARTS

ART HISTORY, THEORY AND PRACTICE #950

Tuition: \$175

7:35 – 9:30 a.m. or 9:50 – 11:45 a.m.

Required for graduation. Open to Kamehameha students entering grades 9–12.

Art History, Theory and Practice is designed to provide

students with visual experiences that will improve their ability to perceive, react to, and make judgments about the fine arts as well as their everyday surroundings. Historical periods of Western art will be covered through slide lectures, films, and video tapes. The art of Hawai'i, as an integral part of Polynesian life, society and culture, will also be studied. Studio projects will emphasize various design and color theories, in addition to reinforcing specific art historical units. The textbook utilizes the inter-disciplinary approach of the course itself, integrating art history, art criticism and art production. An art criticism term paper and a field trip to the Honolulu Academy of Arts bring the added dimensions of critical analytical writing and first hand experience. Art History, Theory and Practice is a prerequisite for further studio courses, and provides a solid foundation for college humanities courses.

THE MULTIMEDIA MIX #9905

Tuition: \$175

7:45 – 9:25 a.m. or 10:00 – 11:40 a.m.

Note: Shortened sessions

Thanks to sites like, Facebook and Instagram, students have become budding experts in multimedia. This course will further their skill set and take what they already do for fun into the classroom. They will gain hands-on experience working with cross-platform multimedia, integrating digital photos, video, audio and web. Students will learn how to properly operate digital cameras and high-definition video cameras. Through a series of projects, they'll also become proficient in Adobe Photoshop, Final Cut Pro, iWeb and website building

In addition to learning how multimedia plays an integral role in society, the course will show students how they may implement multimedia into their daily lives, particularly in school. Multimedia can be used as a way to further enhance projects and to inspire creativity among students. The course will be held in Midkiff Learning Center's Innovation and Collaboration Center (ICC). Final projects may be showcased at the end of the summer program with a completed website of their works. Students successfully completing the class earn half an elective credit.

LANGUAGE

INTRODUCTION TO CONVERSATIONAL HAWAIIAN #991

Tuition: \$175

7:35 – 9:30 a.m. or 9:50 – 11:45 a.m.

Open to students entering grades 9–12.

This is a course for beginning Hawaiian language speakers.

Students who successfully complete the course will receive elective credit which does not meet the 2-year language requirement. The primary emphasis will be on speaking skills with a focus on conversational Hawaiian used in typical everyday situations. It is recommended that students allow time each day after class for homework and conversational practice. Not for students who have Hawaiian language fluency.

ELEMENTARY HAWAIIAN 1 #944

Tuition: \$350

7:35 – 11:45 a.m.

Open to students entering grades 9–12.

Elementary Hawaiian 1 emphasizes skills in listening, reading, writing, and speaking so that students can communicate effectively in various situations which range from exchanging greetings to providing information about the family, friends, school, etc. Hawaiian culture is integrated throughout the course. Students intending to continue to the next level should do so in the immediate next school year. It is recommended that students allow time each day after class for homework and conversational practice. Students should keep all materials for reference.

ELEMENTARY HAWAIIAN 2 #946

Tuition: \$350

7:35 – 11:45 a.m.

Prerequisites: *Elementary Hawaiian 1 or Hawaiian 1B with a C grade or better and with teacher recommendation. A completed Agreement Form, available from your homeroom teacher, must be returned to your grade level counselor (required for KS students only).*

Elementary Hawaiian 2 continues to emphasize the four skill areas of listening, speaking, reading and writing. Greater emphasis is placed on accuracy of pronunciation, expanding vocabulary and learning more complex grammatical structures in new situations that may be culturally relevant. It is recommended that students allow time each day after class for homework and conversational practice. Students who enroll in this course **must** also enroll in Intermediate Hawaiian 3 next school year. Please have your child see his/her counselor to discuss this and make any needed changes to his/her class schedule for next year.

INTERMEDIATE HAWAIIAN 3 #948

Tuition: \$350

7:35 – 11:45 a.m.

Prerequisites: *Elementary Hawaiian 2 with a B– grade or better and with teacher recommendation. A completed*

Agreement Form, available from your homeroom teacher, must be returned to your grade level counselor (required for KS students only).

Using the strong foundation of their first two years of study, Intermediate Hawaiian students will focus on the development of strong oral skills. Most of the class work is conducted in Hawaiian. Daily oral requirements are expected of each student, mostly in the form of spoken presentations in front of the class or individually with the teacher. Students who enroll in this course **must** also enroll in Honors Hawaiian 4 next school year. Additionally, students may request to be placed into a Papa Liuliu (Hawaiian language homeroom). Please have your child see his/her counselor to discuss this and make any needed changes to his/her class schedule for next year. It is recommended that students allow time each day after class for homework and conversational practice.

ELEMENTARY JAPANESE 1 #940

Tuition: \$350

7:35 – 11:45 a.m.

Open to students entering grades 9–12.

Elementary Japanese 1 was designed for those who have little or no knowledge of the Japanese language. The content revolves around the student's school and family life: talking about such things as his life, likes and dislikes, hobbies, family, daily routines, leisure activities, school life, and health. Japanese proficiency is developed through carefully designed information-sharing activities. All four skills of speaking, listening, reading and writing are simultaneously developed. The complete *hiragana* and *katakana* syllabaries are taught for mastery and, in addition, some elementary *kanji* are introduced. Culture is introduced as "fun facts" within the framework of the chapter, and broader cultural experiences are offered through special events such as culture day. It is recommended that students allow time each day after class for homework and conversational practice and keep all materials for reference. Students intending to continue to Elementary Japanese 2 should do so in the immediate next school year.

ELEMENTARY SPANISH 1 #942

Tuition: \$350

7:35 – 11:45 a.m.

Open to students entering grades 9–12.

In this course, students develop skills necessary for effective communication in Spanish in a variety of social situations. Situations may include the everyday exchange of greetings or other courtesies, making or responding to

introductions or invitations, asking or giving directions, and sharing information about oneself, one's family, friends or school, or about special interests such as food, travel or entertainment, etc. In the process students will learn appropriate vocabulary and necessary grammatical structures. They will also learn about the people and countries where Spanish is spoken. Students intending to continue to the next level should do so in the immediate next school year. It is recommended that students allow time each day after class for homework and conversational practice. They should keep all materials for reference.

SOCIAL STUDIES

Important Note: Students are limited to earning no more than 1.5 social studies graduation requirement credits during the summer. For example, a student may take Hawaiian Culture (0.5 credit) one summer and World History (1 credit) another summer. A student may not take World History (1 credit) one summer and U.S. History (1 credit) another summer. The administration may approve exceptions to this policy for boarding students and for students who need to make up social studies credits during the summer. However, administrative approval must be received prior to taking credits beyond the 1.5 credit limit. If a student exceeds the 1.5 credit limit without approval he/she will be required to repeat the course during the regular school year.

HAWAIIAN CULTURE #972

Tuition: \$175

7:35 – 9:30 a.m. or 9:50 – 11:45 a.m.

Open to students entering grades 9–12.

He Meheheu Mai Nā Kūpuna (Habits Acquired from Ancestors)

Hawaiian Culture is a course designed to teach students about the traditional culture and homeland of the Hawaiian people. Areas of study include the physical environment, communications, origins, religion, society/government, and economics of the native Hawaiian people. Classroom activities help to develop the communication skills of writing, researching, speaking as well as critical thinking skills. Students will gain an increased awareness of Hawaiian cultural values and will more clearly understand what it means to be Hawaiian in a modern world.

WORLD HISTORY #978

Tuition: \$350

7:35 – 11:45 a.m.

Open to students entering grades 10–12.

World History is a record of the adventures of humankind,

both the famous and the ordinary, throughout thousands of years. Emphasis is placed on major themes: political change and economic development, the influence of geography on cultures, the growth of science and technology, the effect of contact between people of various countries, and creativity in the arts. Students will examine these themes through reading, writing and hands-on activities.

GLOBAL CONNECTIONS — WORLD HISTORY #978

For Summer 2014. For information only; not available in KSConnect for Summer 2014.

Tuition: \$350

plus European Travel and Tour fees (approx. \$5000).

Travel dates (tentative): June 2 – 19, 2014

Kapālama Classroom sessions:

Throughout the school year 2013 – 2014 and one post-trip meeting.

Prerequisite: *KS Entering Sophomore or Junior standing who reserved with EF tours.*

This World History course includes an 18 day educational trip to Germany, Austria, Italy, Switzerland, France and United Kingdom escorted by Education First (EF) Educational Tours and KS Social Studies faculty. Students will complete course assignments before, during, and after the European trip. Book reports, research papers other assignments given will be completed before departure. During the tour, students will maintain a travel journal, make presentations, participate in reflection and discussion sessions and collect photos. After the trip students will work independently to create a multimedia presentation illustrating the course themes of culture, history, people, power, civic ideals, and the environment. It will be presented at a designated time after the trip.

GLOBAL STUDIES: A SEMINAR ON THE ASIA-PACIFIC REGION #9862

Tuition: \$175

Times and dates TBA.

For current Kamehameha students, preference given to students entering grade 12.

For more information contact Kapua Akiu-Wilcox at 842-8284 or suakiu@ksbe.edu .

This semester course will cover topics in the Asia-Pacific region with special emphasis on the areas of China and Russia in preparation for an educational foreign study trip to either China or Russia. Preparation for the foreign study experience will require students to read current event articles, fiction and non-fiction books and do research in order

to engage in high level discussions and reflection with other students from across the Asia-Pacific Region during the foreign study experience. The focus of the course will be on political, social and economic changes happening throughout the region. Students will apply a historical lens to examine culture, foreign policy and economics to understand the way these countries are dealing with past and present-day effects of globalization and its impact on environmental and cultural sustainability. Through careful reading, writing, discussion and research, students will be prepared to present their knowledge in educational seminars with foreign government officials, business leaders, educators, and students.

Note: Students earn half a social studies elective credit.

U.S. HISTORY #976

Tuition: \$350

7:35 – 11:45 a.m.

Open to students entering grades 11–12.

This course emphasizes U.S. History in the 20th century. It combines a traditional approach of cause and effect relationships presented in chronological order with an interactive program of skill-oriented tasks. Students will increase skills in writing, reading, listening, and speaking as they learn about the origins and development of America's government, economy, society, and culture. To complement the text, students will be engaged in problem-solving activities in groups, and other skill-oriented tasks, that encourage use of multiple intelligences to view, touch, interpret, and act out historical events. To ensure that students become future participants in the American political process, emphasis will be placed on understanding important features of the structure and function of government, and awareness of current issues. A standard research term paper/project, with works cited, will enhance student's critical thinking and writing skills.

HAWAIIAN HISTORY #974

Tuition: \$175

7:35 – 9:30 a.m. or 9:50 – 11:45 a.m.

Open to Kamehameha students entering grades 11–12.

A primary goal of the Hawaiian History course is to have students understand how numerous historical circumstances people and events affected previous generations of Hawaiians and how these circumstances, people and events continue to influence their generation. The main focus of this course begins with the rise of the Kamehameha Pai'ea and continues through to our contemporary setting. Stressed throughout the course are efforts of numerous

Hawaiian leaders to improve the standing of the Hawaiian nation for the Hawaiian people. Two related goals of the course are to encourage students to become involved in current issues and to be able to look at the world from both western and Hawaiian perspectives. This will enable students to seek opportunities for developing a better future for Hawai'i and Hawaiians.

ECONOMICS #970

Tuition: \$175

7:35 – 9:30 a.m. or 9:50 – 11:45 a.m.

Open to Kamehameha students entering grades 11–12.

Economics is a one-semester survey course that introduces students to the basic microeconomic and macroeconomic concepts they will encounter in introductory college economics courses and throughout life. Economics is the study of choice. This course will assist the student in critically analyzing his or her own choices, the choices of consumers, the choices of producers, and the choices of societies and governments at local, national and international levels. Each student should achieve a level of economic literacy sufficient to evaluate both current events and historical events in economic terms. Students will demonstrate and apply their understanding of economics by writing analysis papers and/or delivering oral presentations. Each analysis will be an application of economic principles and should demonstrate a comprehensive approach to economic problem solving by including graphical analysis as well as intuitive verbal explanations. Some basic mathematical skills will be necessary.

AFTERNOON COURSES

June 17 – July 19, unless otherwise noted.

Classes are from 12:30 – 4:00 p.m., unless otherwise noted.

Sack lunches will be provided for grades 1–8 students enrolled in the full afternoon session.

Students are expected to attend until 4:00 p.m. daily. Afternoon class tuition will be included in the Financial Aid award for students who qualify for Financial Aid.

KS reserves the right to cancel any class if the enrollment falls below 15 students.

PERFORMING ARTS ACADEMY

Tuition: \$400

For students entering grades 6–12.

Performing Arts Academy (PAA) is an afternoon KS Kapālama Summer School program offering courses in

band, choir, contemporary dance, hula, percussion, orchestra and Hawaiian ensemble as well as exploration and appreciation of other performing arts areas. A sack lunch is provided for all students grades 6–12. The program ends with a hō'ike (show) for parents. Therefore attendance is mandatory the final week of the Academy. PAA is a no-credit, ungraded 5-week afternoon program. Students may choose one of the following areas of concentration:

BAND #9001

Beginning students are introduced to the different instruments, learn basic musical concepts and theory and to read music. Advanced students will refine their skills in music theory and learn to play more difficult musical pieces. Please include a letter from your child's current music teacher recommending either Beginning or Advanced Band.

CHOIR #9002

Students will learn vocal technique, stage presence, pitch recognition and singing in parts. They will also be introduced to basic theory.

ORCHESTRA #9003

Students learn to play or advance their abilities to play a violin, viola, cello or bass. Emphasis on position, tone development, technical development and basic theory. This class is for beginning, intermediate and advanced students. Please include a letter from your child's current music teacher recommending either Beginning or Advanced Orchestra.

CONTEMPORARY DANCE #9004

Students will be introduced to various styles of dance including ballet, hip hop, jazz and modern and learn basic dance terms, techniques and choreography.

HAWAIIAN ENSEMBLE #9005

Students will learn chords and strumming techniques to play the 'ukulele, guitar or bass as well as how to sing popular Hawaiian songs. Students will study both traditional and contemporary Hawaiian music.

PAPA OLI AND HULA #9007

Students will learn oli (chanting) and basic hula terms and steps. Both traditional and contemporary Hawaiian hula will be studied. Boys and girls classes are offered.

PERCUSSION ENSEMBLE #9008

Beginning students will be exposed to basic techniques in snare drum, keyboard mallets, timpani and drum set. Advanced students will be exposed to drum set independence, more complex rhythm patterns and more challenging musical pieces.

SUMMER ACTIVITIES CLASSES

PLAY TO LEARN #1000

Tuition: \$400

12:30 – 4:00 p.m.

Open to students entering grades 1–3.

This course will provide students with enrichment activities that incorporate literature, dancing, storytelling, art, cooking, singing, sports and games with an emphasis on meaningful and motivational instruction.

Dress: Shorts, T-shirts, and sport shoes, such as athletic or jogging shoes, are appropriate. As much as possible, students will be grouped by age or entering grades.

CULTURES OF HAWAII

#1060 *For students entering grades 1–2.*

#1061 *For students entering grades 3–4.*

Tuition: \$400

12:30 – 4:00 p.m.

Each day students will have fun learning how to make Hawaiian crafts, exploring Hawaiian cultures and dancing hula.

BODY AND BRAIN TRAINING

#1080 *For students entering grades 1–2.*

#1081 *For students entering grades 3–4.*

Tuition: \$400

12:30 – 4:00 p.m.

These classes will help students build physical, mental and emotional strength through daily lessons in computer skills, sports and games.

ART AND SPORTS #1050

Tuition: \$400

12:30 – 4:00 p.m.

For students entering grades 3–4.

Included in these classes are a daily mix of arts, music, games and sports.

CRAFTS AND SPORTS

#1041 *For students entering grades 5–6.*

#1042 *For students entering grades 7–8.*

Tuition: \$400

12:30 – 4:00 p.m.

For the creative and active student, this daily mix of classes will include tennis, arts and crafts and field sports.

SPORTS AND NUTRITION

#1070 *For students entering grades 5–6.*

#1071 *For students entering grades 7–8.*

Tuition: \$450

12:30 – 4:00 p.m.

For the sports enthusiast, these classes include daily instruction in strength and conditioning, racquetball, volleyball, basketball and healthy living.

TECHNOLOGY AND STRENGTH CONDITIONING

#1075 *For students entering grades 5–6.*

#1076 *For students entering grades 7–8.*

Tuition: \$450

12:30 – 4:00 p.m.

The daily classes include instruction in basic practical arts and crafts using a variety of tools to expand creative thinking skills, exploring robotics using LEGO robotics and learning the fundamentals of weight training, conditioning, wellness and a healthy lifestyle.

HIGH SCHOOL FITNESS #1010

Tuition: \$200

12:25 – 2:25 p.m. Meets June 10 – July 19

High School Fitness is a 2-hour course for those high school students who did not complete P.E. 1, 2, 3 or 4 for credit. Emphasis is directed to aerobic fitness activities — primarily running and beach swimming. Daily participation, a swimsuit, multipurpose athletic shoes and comfortable clothing are required for this class. Completion of the course is accomplished by completing a 10K (6 mile) run at the end of the 6-week session.



Kamehameha Schools Kapālama Summer School 2013 Course Change OR Withdrawal Form

KAMEHAMEHA SCHOOLS®

KS Student Number _____

(PLEASE PRINT LEGIBLY)

Student's Legal Name _____ Current Grade _____ Sex _____
Last First M.I. Birthdate ____ / ____ / ____

Father/Guardian _____
Mother/Guardian _____
Address _____
City _____ State _____ Zip _____

Home Phone (____) _____
Father's Work Ph. _____
Father's Cell Ph. _____
Mother's Work Ph. _____
Mother's Cell Ph. _____

COURSE CHANGE REQUEST

Course changes will be accepted until May 3, 2013. Any request made after May 3, 2013 will be charged a \$50 processing fee. This is based on a space availability, if space is available, we will process your request and send you a new schedule.

Please Note: Most classes are filled by early April.

If you are **not deleting** a course, write **"None"**

Add Course # _____ Delete Course # _____

Add Course # _____ Delete Course # _____

Reason: _____

Parent Signature _____ **Date** _____

(Requests will not be considered without parent signature.)

WITHDRAWAL REQUEST

Please withdraw my child listed above from ALL Kapālama Summer School classes. I understand I will be charged the following fees, (includes Financial Aid awardees):

May 6 to May 19 – \$25.00 / **May 20 to May 27** – \$100.00 / **May 28 to June 3** – \$200.00
June 4 – full tuition due/charged/no refund.

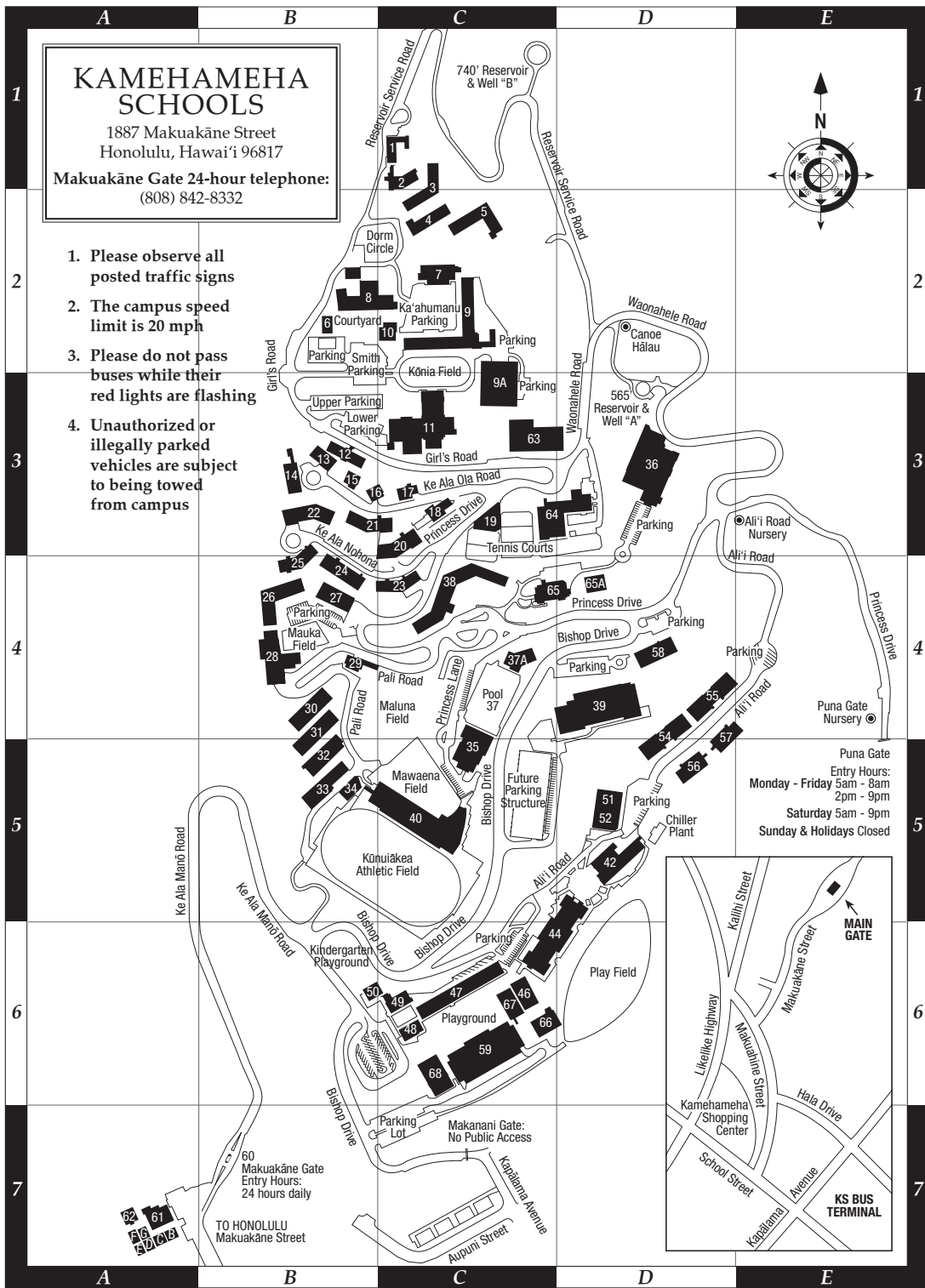
Parent Signature _____ **Date** _____

(Refunds will not be processed without parent signature. Postmark date or date fax received will be used to determine fees charged. Phone requests will not be honored.)

Kamehameha Schools
Kapālama Summer School Office
1887 Makuakāne Street
Honolulu, Hawai'i 96817-1887
Phone (808) 842-8765
Fax (808) 842-0850

FOR OFFICE USE ONLY	
Fees charged \$ _____	Initial _____
Date _____	





1. Keōpūlani-Uka.....B-1	14. Hale OlaB-3	30. Physical Plant/.....B-4	42. Ka'ōleiokū.....D-5	60. Main Gate.....B-7
2. Keōpūlani-Kai.....B-1	15. Hale Hāna'ī.....B-3	Transportation/Security.....B-4	44. Keli'imaika'ī.....C-5	61. Ulupono.....A-7
3. Kapi'olani Nui.....B-1	16. Hale Alaka'ī.....B-3	31. Plumbing/Paint/.....B-4	46. Kalanimōkū.....C-6	62. Ulupono.....A-7
4. Kekāuluohi.....C-2	17. Hale Kahu.....C-3	Grounds Shop/Custodial.....B-5	47. Kūihelani.....C-6	63. 'Akahi Dining Hall/.....C-3
5. Kina'u.....C-2	18. Hale Pelekikena.....C-3	32. Carpenter/.....B-5	48. Nāhi'ena'ena.....C-6	'Akahi Student Center/School Store.....C-3
6. Haleakalā Annex.....B-2	19. Tennis Courts/.....C-3	Electrical Shops.....B-5	49. Kānekapōlei.....C-6	64. Kapūkahi.....C-3
7. Ka'ahumanu.....C-2	20. Lunaliilo.....C-3	33. Grounds/.....B-5	50. Keolaokalani.....B-6	65. Bernice Pauahi.....C-4
8. Haleakaā.....B-2	21. Kapuāiwa.....B-3	Welding Shop.....B-5	51. Keawe Gym.....D-5	66. Bishop Memorial Chapel.....C-4
9. Kōnia.....C-2	22. 'Iolani.....B-3	34. Grounds.....B-5	52. Keawe Gym.....D-5	67. Bernice Pauahi.....C-4
9A. Frank E Midkiff.....C-3	23. Kamehameha.....C-4	35. Koai'a.....C-5	Locker Room.....D-5	68. Kapūkahi.....C-3
Learning Center.....C-3	24. Liholiho.....B-4	36. Ka'iwakiloumoku.....D-3	54. Alice E. Knapp.....D-4	65A. Bernice Pauahi.....D-4
10. W.O. Smith.....C-2	25. Kaleiopapa.....B-4	37. Kalani'ōpu'u Pool.....C-4	55. Maude Post.....D-4	Bishop Heritage Center.....D-4
11. Princess Ruth.....C-3	26. Keōua.....B-4	37A. TBD.....C-4	56. Ka'iulani.....D-5	66. Ke'eumoku.....C-6
Ke'elikōlani Performing Arts Complex.....C-3	27. Bishop Hall.....B-4	38. Paki.....C-4	57. Kekuāiwa.....D-4	67. Keku'iapoiva.....C-6
12. Hale Kukui.....B-3	28. Kekuānao'a.....B-4	39. Kekuhaupi'o.....D-4	58. Princess Bernice.....D-4	68. Kekelaokalani.....C-6
13. Hale Mālama Ola.....B-3	29. Hale Koa.....B-4	40. Kūniūikea.....C-5	59. Kamāmalu.....C-6	