



Week of: February 8-12

Homework - **DUE THURSDAY 2/11**

Language Arts:

1. **Comprehension Packet #14**
Please complete days 1-5 by Thursday.
2. **Reading Log-**
Please read for 10 minutes and record on reading log. 😊
3. **Spelling Worksheet-Due Thursday**

Math: (Standards Practice Book)

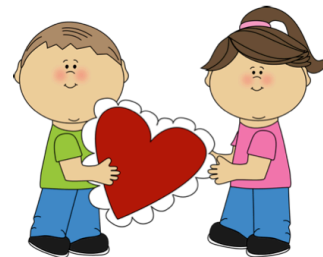
Monday-P166-169
Tuesday- P170-171 Review
Wednesday- Ch. 8 Post Test
Thursday-Ch. 9 Pre-Test

Turn in Math Homework Daily!

Tips to help your child:

Pink, White and Red Dress Day-Thursday
Hau'oli la aloha!

- Your child may bring cards / treats for *Valentine's Day* to share with friends on *Thursday*. There are 20 students in our class.



What we're learning this week...

Language Arts:

CPAA Testing, Fountas & Pinnell Assessments cont. and Goal Setting in Reading and Math for NWEA.

Math:

CC.1.NBT.4, CC.1.NBT.6

- **Related Addition and Subtraction**
- **Practice Addition and Subtraction**

COMMON ERRORS

When adding two-digit and one-digit numbers, children may add the one-digit number as a ten.

Reminders

Lion Dance - Thursday

No School Friday, 2/12 - In-Service Workday

No School Monday 2/15 - President's Day

