

# Mo'okū'auhau



## Your Genealogy, Your 'Ohana

### A Research Guide for Kamehameha Schools' Haumāna

#### Mana'o Mua--Introduction

For those of us who are kanaka 'ōiwi, knowledge of our kūpuna helps us to define our past and to identify ourselves for the present and future. Much of our traditional Hawaiian history was described through mo'olelo and mele (hula and oli), some of which also served as genealogical records. Unfortunately, as these records have been forgotten, and written documents remain obscure, the links to our kūpuna have been weakened. As our interest in their lives and legacies grows, we are inspired to re-forge our links to them by researching our mo'okū'auhau (genealogies).



As a Kamehameha haumāna you are well aware of the opportunities that your kanaka 'ōiwi ancestry has made possible for you, and the value of knowing your mo'okū'auhau. As you and your 'ohana conduct further research into your lineage, this guide is offered as a tool to assist you in this quest.

#### Mo'oki'ina--Process

1. Establish a system for documenting your findings and storing the wealth of materials that you will collect. We strongly suggest that you acquire an assortment of boxes, folders, 3-ring binders, etc.

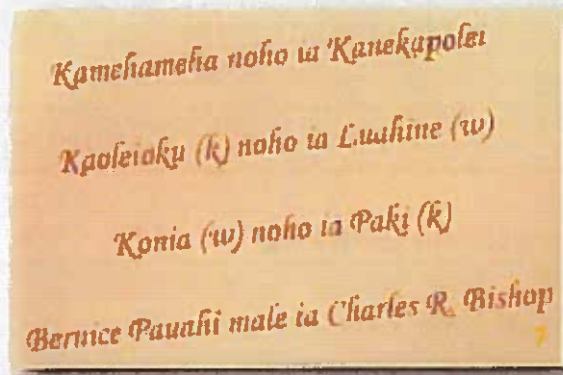
*Note: Don't expect to collect every bit of information at one time; this project will be an ongoing process. This is why an effective documentation and storage system is important!*

2. Gather relevant palapala (documents) such as birth, marriage and death certificates, newspaper clippings, obituaries, photographs, diaries, etc., that will help you to build your genealogy. Consult with as many family members and friends who may be available to you. See item 6 below for additional resources.



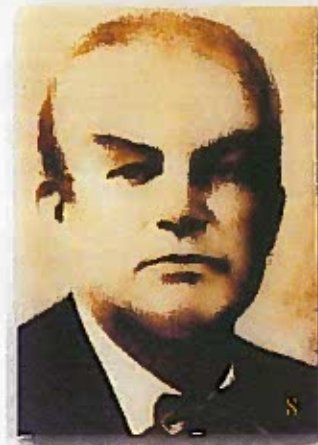
*Note: Should you find conflicting data, cross-check your sources. If you cannot resolve the conflict consider including at least two of the most credible versions with documentation for each.*

- Download and/or print the pedigree chart in pdf format (select either a Hawaiian or English language version from the Appendix). A visual layout will make it easier to keep track of your progress. Write the inoa 'ohana (family surname) you will research. Use a pencil to start with as errors will be easier to correct.



- On the English language chart, start with yourself at number 1 and fill in information from your birth certificate. Your father's (paternal) information will be entered at number 2 and your mother's (maternal) information at number 3. Do likewise for the 'ōlelo Hawai'i version.

*Note: When recording information for a married woman, include her maiden name.*



- Fill the remaining spaces with the information you are able to gather. To acquire additional information, refer to the various repositories listed in "Genealogy Resource Venues in Hawai'i." Visit their websites (if available) ahead of time to familiarize yourself with their policies, rules, procedures, and charges for copying/reproduction. Paper and a pencil are normally permitted, but check whether pens, laptops, pads, and cameras (including cell phone cameras) are allowed. If battery powered devices are permitted, be sure that your batteries are fresh or fully charged. Take small coins to make copies (if allowed).



Courtesy of the KS Archives

## 6. Depositories of Genealogy Resources

### PRIMARY DEPOSITORIES

#### ***Hawai'i State Department of Health (DOH)***

1250 Punchbowl St.

Honolulu, HI. 96813

Phone: 586 – 4533

URL: <http://hawaii.gov/health/vital-records/index.html>

*Birth, Death, Delayed Birth Records with testimony,  
Divorce and Marriage certificates.*



KINA'U HALE  
Department of Health

#### ***Hawai'i State Archives (HSA)***

367 S. King St.

'Iolani Palace Grounds

Honolulu, HI. 96813

Phone: 586-0329

URL: <http://hawaii.gov/dags/archives>

*This valuable collection is home to mostly 19<sup>th</sup> century  
government records, including:*



KEKAULUOHI HALE  
Archives

Birth Records

Census Records: 1840-1896; 1900; 1910; 1920

Change of Names

Chinese Bureau Enter and Return Permits Permits

Chinese Minors and Women Entry

Church Records

Civil Cases

Court Documents

Death Records

Divorce Records

Hawaiian Born Children of Chinese Heritage

Immigration Records

Kalaupapa Death Register of Patients

Kalaupapa Marriage Documents

Kalaupapa Patient Register

Land Records

Marriage Records

Military Records

Oaths of Loyalty



Tax Records (personal and real property)

Telephone and City Directories

Veterans Records

Vital Statistics - Indexes as reported in newspapers:

Births (1857-1945)

Marriages (1845-1945)

Obituaries (1844-June 1950), and may be found in some Hawaiian newspapers.

Records: Birth, Marriage, and death records for all islands, 1826-1910 (incomplete). Marriage record books before 1900 are books recorded by the missionaries

Voting Records

Hawaiian Genealogies:

These genealogy books contain traditional family oral genealogies; Hawaiian data for the following family names predate western contact (1778):

Amalu

Char

Hakaleleponi

Haloa

Helekunihi

Huahuailani

Kaihilani

Kalakaua

Kamehameha

Kao`o

Kapa`akea & Keohokalole

Kapohailii

Keaweheulu

Kepookulou

Kipi

Kuhio

Kumuhonua & Wakea

Kumulae

Mahoe

Malo

Nanaulu

Pauahi

Peabody

Pratt

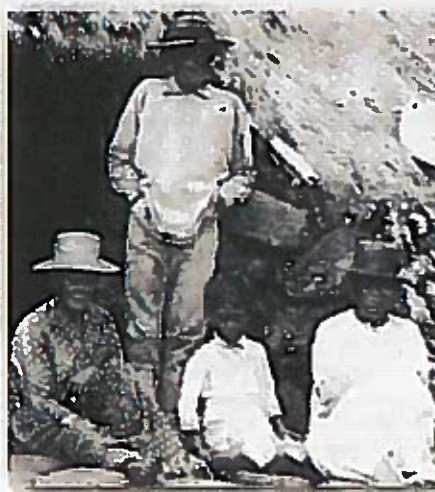
Queen Kapiolani

Stillman

Wilcox



Courtesy of the KS Archives



Courtesy of the KS Archives

## ADDITIONAL DEPOSITORIES

### **BISHOP MUSEUM ARCHIVES/LIBRARY**

1525 Bernice St.  
Honolulu, HI. 96817  
Phone: Archives 848-4182  
Phone: Library 848-4148  
<http://www.bishopmuseum.org/research/library/index.html>

*The Archives/Library has a collection of genealogy manuscripts that includes some Hawaiian royalty, indexed by name, personal letters, journals, diaries, photographs and employments records. There is a fee for copying; call for current price schedule.*



BM Entrance to PĀKĪ & PAUAHI HALLS  
(via ma uka parking lot)

### **HAWAII STATE BUREAU OF CONVEYANCES**

1151 Punchbowl St.  
Honolulu, HI. 96813  
Phone: 587-0147  
<http://hawaii.gov/dlnr/boc>

*The Bureau's Grantee/Grantor Indexes might provide important family genealogies and deeds of adoption which date back to 1845. Listed will be the book (Liber) and page of the recorded incident, many of which might be in the Hawaiian language. It is important for the researcher to know important family dates (i.e. births, marriages, deaths, divorces, adoptions, purchase of property, etc.).*



KALANIMŌKŪ HALE  
Bureau of Conveyances

### **CHURCH OF JESUS CHRIST OF LATTER-DAY SAINTS, THE**



The Church of Jesus Christ of Latter-Day Saints (Mormon Church) has several Family History Centers throughout the state. Each center is manned by a staff of volunteers who, from time to time, conduct genealogy workshops throughout the year. Please check with the nearest center for hours of service. You do NOT have to be a Mormon to gain access to the history centers, just the desire to do genealogy research.

<http://www.archives.com/genealogy/records-hawaii.html>

*Available on microfilm are archival records from 1823-1858, burial records, Cemetery directories (O`ahu, Maui, Moloka`i, Lana`i, etc.) Church Baptismals, Dept. of Health records from 1834-1909 and 1910 to May 1925, marriage and divorce records, immigration, journals, probates, and voter registration records.*

## SELECTED RESOURCES

(Call numbers are specific to the Hawai'i-Pacific Collection, Midkiff Learning Center)

*Hawaiian Genealogy Project : Directory of Secondary Sources.* Honolulu : Office of Hawaiian Affairs, 1993.  
[H 929.1 H313d]

*How to Do Oral History.* Honolulu: Center for Oral History, Social Science Research Institute, University of Hawaii at Manoa, 2000. [H 904.2 H83]

McKinzie, Edith Kawelohea. *Hawaiian Genealogies: Extracted from Hawaiian Language Newspapers.*  
Edited by Ishmael W. Stagner, II. Laie, Hawaii: The Institute for Polynesian Studies, Brigham Young University—Hawaii, 1983. [H 929.1 M19h]

Office of Hawaiian Affairs. *Mookuauhau = Genealogies : A Treasure and Inheritance.* [Honolulu] : Office of Hawaiian Affairs, 1988. [H 929.1 H306O]

## ILLUSTRATION CREDITS

Dani Gardner: 1-6, 8, 9, & 12

Kawika Makanani: 7, 10 & 11

Kamehameha Schools Archives (as captioned)

*A production of the Hawaii-Pacific Collection, Midkiff Learning Center*

## CONTENT

Dani Gardner, Library Assistant

## DESIGN & EDITING

Kawika Makanani, Librarian

© 2012

## Appendix

1. Pedigree Chart
2. Palapala Kuhikuhi Kū'auhau

# Names of Old Time Illnesses

*Compiled by Daniel H. Burrows*

*Reprinted courtesy of Genealogy Records Service*

*More information available FREE online*

*<http://www.genrecords.com>*

Ablepsy	Blindness	Canine madness	Rabies, hydrophobia
Ague	Malarial Fever	Canker	Ulceration of mouth or lips or herpes simplex
American plague	Yellow fever	Catalepsy	Seizures/trances
Anasarca	Generalized massive edema	Catarrhal	Nose and throat discharge from cold or allergy
Aphonia	Laryngitis	Cerebritis	Inflammation of cerebrum or lead poisoning
Aptha	The infant disease "thrush"	Chilblain	Swelling of extremities caused by exposure to cold
Apoplexy	Paralysis due to stroke	Child bed fever	Infection following birth of a child
Asphyxia/Asphixia	Cyanotic and lack of oxygen	Chin cough	Whooping cough
Atrophy	Wasting away or diminishing in size.	Chlorosis	Iron deficiency anemia
Bad Blood	Syphilis	Cholera	Acute severe contagious diarrhea with intestinal lining sloughing
Bilious fever	Typhoid, malaria, hepatitis or elevated temperature and bile emesis	Cholera morbus	Characterized by nausea, vomiting, abdominal cramps, elevated temperature, etc.
Biliousness	Jaundice associated with liver disease	Cholecystitis	Could be appendicitis
Black plague	Bubonic plague	Cholelithiasis	Inflammation of the gall bladder
Black fever	Acute infection with high temperature and dark red skin lesions and high mortality rate	Chorea	Gall stones
Black pox	Black Small pox	Cold plague	Disease characterized by convulsions, contortions and dancing
Black vomit	Vomiting old black blood due to ulcers or yellow fever	Colic	Ague which is characterized by chills
Blackwater fever	Dark urine associated with high temperature	Congestive chills	An abdominal cramping
Bladder in throat	Diphtheria (Seen on death certificates)	Consumption	Malaria
Blood poisoning	Bacterial infection; septicemia	Congestion	Tuberculosis
Bloody flux	Bloody stools	Congestive chills	Any collection of fluid in an organ, like the lungs
Bloody sweat	Sweating sickness	Congestive fever	Malaria with diarrhea
Bone shave	Sciatica	Corruption	Malaria
Brain fever	Meningitis	Coryza	Infection
Breakbone	Dengue fever	Costiveness	A cold
Bright's disease	Chronic inflammatory disease of kidneys	Cramp colic	Constipation
Bronze John	Yellow fever	Crop sickness	Appendicitis
Bule	Boil, tumor or swelling	Croup	Overextended stomach
Cachexy	Malnutrition		Laryngitis, diphtheria, or strep throat
Cacogastric	Upset stomach		
Cacospysy	Irregular pulse		
Caduceus	Subject to falling sickness or epilepsy		
Camp fever	Typhus; aka Camp diarrhea		

Cyanosis	Dark skin color from lack of oxygen in blood	Extravasted blood	bulbous lesions
Cynanche	Diseases of throat	Falling sickness	Rupture of a blood vessel
Cystitis	Inflammation of the bladder	Fatty Liver	Epilepsy
Day fever	Fever lasting one day; sweating sickness	Fits	Cirrhosis of liver
Debility	Lack of movement or staying in bed	Flux	Sudden attack or seizure of muscle activity
Decrepitude	Feebleness due to old age	Flux of humour	An excessive flow or discharge of fluid like hemorrhage or diarrhea
Delirium tremens	Hallucination due to alcoholism	French pox	Circulation
Dengue	Infectious fever endemic to East Africa	Gathering	Syphilis
Dentition	Cutting of teeth	Glandular fever	A collection of pus
Deplumation	Tumor of the eyelids which causes hair loss	Great pox	Mononucleosis
Diary fever	A fever that lasts one day	Green fever/sickness	Syphilis
Diphtheria	Contagious disease of the throat	Grippe/grip	Anemia
Distemper	Usually animal disease with malaise, discharge from nose and throat, anorexia	Grocer's itch	Influenza like symptoms
Dock fever	Yellow fever	Heart sickness	Skin disease caused by mites in sugar or flour
Dropsy	Edema (swelling), often caused by kidney or heart disease	Heat stroke	Condition caused by loss of salt from body
Dropsy of the Brain	Encephalitis	Hectical complaint	Body temperature elevates because of surrounding environment temperature and body does not perspire to reduce temperature. Coma and death result if not reversed
Dry Bellyache	Lead poisoning	Hematemesis	Recurrent fever
Dyscrasy	An abnormal body condition	Hematuria	Vomiting blood
Dysentery	Inflammation of colon with frequent passage of mucous and blood	Hemiplegy	Bloody urine
Dysorexy	Reduced appetite	Hip gout	Paralysis of one side of body
Dyspepsia	Indigestion and heartburn. Heart attack symptoms	Horrors	Osteomyelitis
Dysury	Difficulty in urination	Hydrocephalus	Delirium tremens
Eclampsy	Symptoms of epilepsy or convulsions during labor	Hydropericardium	Enlarged head, water on the brain
Ecstasy	A form of catalepsy	Hydrophobia	Heart dropsy
Edema	Nephrosis; swelling of tissues	Hydrothroax	Rabies
Edema of lungs	Congestive heart failure, a form of dropsy	Hypertrophic	Dropsy in chest
Eel thing	Erysipelas	Impetigo	Enlargement of organ, like the heart
Elephantiasis	A form of leprosy	Inanition	Contagious skin disease characterized by pustules
Encephalitis	Swelling of brain; aka sleeping sickness	Infantile paralysis	Physical condition resulting from lack of food
Enteric fever	Typhoid fever	Intestinal colic	Polio
Enterocolitis	Inflammation of the intestines	Jail fever	Abdominal pain due to bad diet
Enteritis	Inflations of the bowels	Jaundice	Typhus
Epitaxis	Nose bleed	King's evil	Condition caused by blockage of intestines
Erysipelas	Contagious skin disease, due to Streptococci with vesicular		Tuberculosis of neck and lymph



	glands	Pemphigus	Skin disease of watery blisters
Kruchhusten	Whooping cough	Pericarditis	Inflammation of heart
Lagrippe	Influenza	Peripneumonia	Inflammation of lungs
Lockjaw	Tetanus or infectious disease affecting the muscles of the neck and jaw. Untreated, it is fatal in 8 days	Peritonitis	Inflammation of abdominal area
Long sickness	Tuberculosis	Petechial Fever	Fever characterized by skin spotting
Lues disease	Syphilis	Phthiriasis	Lice infestation
Lues venera	Venereal disease	Phthisis	Chronic wasting away or a name for tuberculosis
Lumbago	Back pain	Plague	An acute febrile highly infectious disease with a high fatality rate
Lung fever	Pneumonia	Pleurisy	Any pain in the chest area with each breath
Lung sickness	Tuberculosis	Podagra	Gout
Lying in	Time of delivery of infant	PolioPotter's asthma	Fibroid pthisis
Malignant sore throat	Diphtheria	Pott's disease	Tuberculosis of spine
Mania	Insanity	Puerperal exhaustion	Death due to child birth
Marasmus	Progressive wasting away of body, like malnutrition	Puerperal fever	Elevated temperature after giving birth to an infant
Membranous Croup	Diphtheria	Puking fever	Milk sickness
Meningitis	Inflations of brain or spinal cord	Putrid fever	Diphtheria.
Metritis	Inflammation of uterus or purulent vaginal discharge	Quinsy	Tonsillitis.
Miasma	Poisonous vapors thought to infect the air	Remitting fever	Malaria
Milk fever	Disease from drinking contaminated milk	Rheumatism	Any disorder associated with pain in joints
Milk leg	Post partum thrombophlebitis	Rickets	Disease of skeletal system
Milk sickness	Disease from milk of cattle which had eaten poisonous weeds	Rose cold	Hay fever or nasal symptoms of an allergy (Child's disease) ???
Mormal	Gangrene	Rotanny fever	German measles
Morphew	Scurvy blisters on the body	Rubeola	Scab
Mortification	Gangrene of necrotic tissue	Sanguineous crust	Scarlet fever
Myelitis	Inflammation of the spine	Scarlatina	A disease characterized by red rash
Myocarditis	Inflammation of heart muscles	Scarlet fever	Roseola
Necrosis	Mortification of bones or tissue	Scarlet rash	Rheumatism in the hips
Nephrosis	Kidney degeneration	Sciatica	Cancerous tumors
Nepritis	Inflammation of kidneys	Scirrhus	Dizziness, nausea and dimness of sight
Nervous prostration	Extreme exhaustion from inability to control physical and mental activities	Scotomy	Writer's cramp
Neuralgia	Described as discomfort, such as "Headache" was neuralgia in head	Scrivener's palsy	Rheumatism
Nostalgia	Homesickness	Screws	Tuberculosis of neck lymph glands.
Palsy	Paralysis or uncontrolled movement of controlled muscles. It was listed as "Cause of death"	Scrofula	Progresses slowly with abscesses and pistulas
Paroxysm	Convulsion		

Scruppox	develop. Young person's disease		
Scurvy	Skin disease, impetigo	Thrombosis	by high fever, headache and dizziness
	Lack of vitamin C. Symptoms of weakness, spongy gums and hemorrhages under skin	Thrush	Blood clot inside blood vessel
Septicemia	Blood poisoning		Childhood disease characterized by spots on mouth, lips and throat
Shakes	Delirium tremens	Tick fever	Rocky mountain spotted fever
Shaking	Chills, ague	Toxemia	Eclampsia
Shingles	Viral disease with skin blisters	Trench mouth	Painful ulcers found along gum line, Caused by poor nutrition and poor hygiene
Ship fever	Typhus		Whooping cough
Siriasis	Inflammation of the brain due to sun exposure	Tussis convulsiva	Infectious fever characterized high fever, headache, and dizziness
Sloes	Milk sickness	Typhus	Smallpox
Small pox	Contagious disease with fever and blisters		Bleeding
Softening of brain	Result of stroke or hemorrhage in the brain, with an end result of the tissue softening in that area	Variola	St. Vitus Dance
		Venesection	Enlarged head
Sore throat distemper	Diphtheria or quinsy	Viper's dance	Tuberculosis of the bone
Spanish influenza	Epidemic influenza	Water on brain	Pneumonia
Spasms	Sudden involuntary contraction of muscle or group of muscles, like a convulsion	White swelling	Infection of the uterus.
		Winter fever	Convulsions associated with teething, worms, elevated temperature or diarrhea
Spina bifida	Deformity of spine	Womb fever	Yellow fever.
Spotted fever	Either typhus or meningitis	Worm fit	
Sprue	Tropical disease characterized by intestinal disorders and sore throat		
		Yellowjacket	
St. Anthony's fire	Also erysipelas, but named so because of affected skin areas are bright red in appearance		
St. Vitas dance	Ceaseless occurrence of rapid complex jerking movements performed involuntary		
Stomatitis	Inflammation of the mouth		
Stranger's fever	Yellow fever		
Strangery	Rupture		
Sudor anglicus	Sweating sickness		
Summer complaint	Diarrhea, usually in infants caused by spoiled milk		
Sunstroke	Uncontrolled elevation of body temperature due to environment heat. Lack of sodium in the body is a predisposing cause		
Swamp sickness	Could be malaria, typhoid or encephalitis		
Sweating sickness	Infectious and fatal disease common to UK in 15th century		
Tetanus	Infectious fever characterized		

## Genealogy Resources In Hawai'i

### PRIMARY RESOURCE:

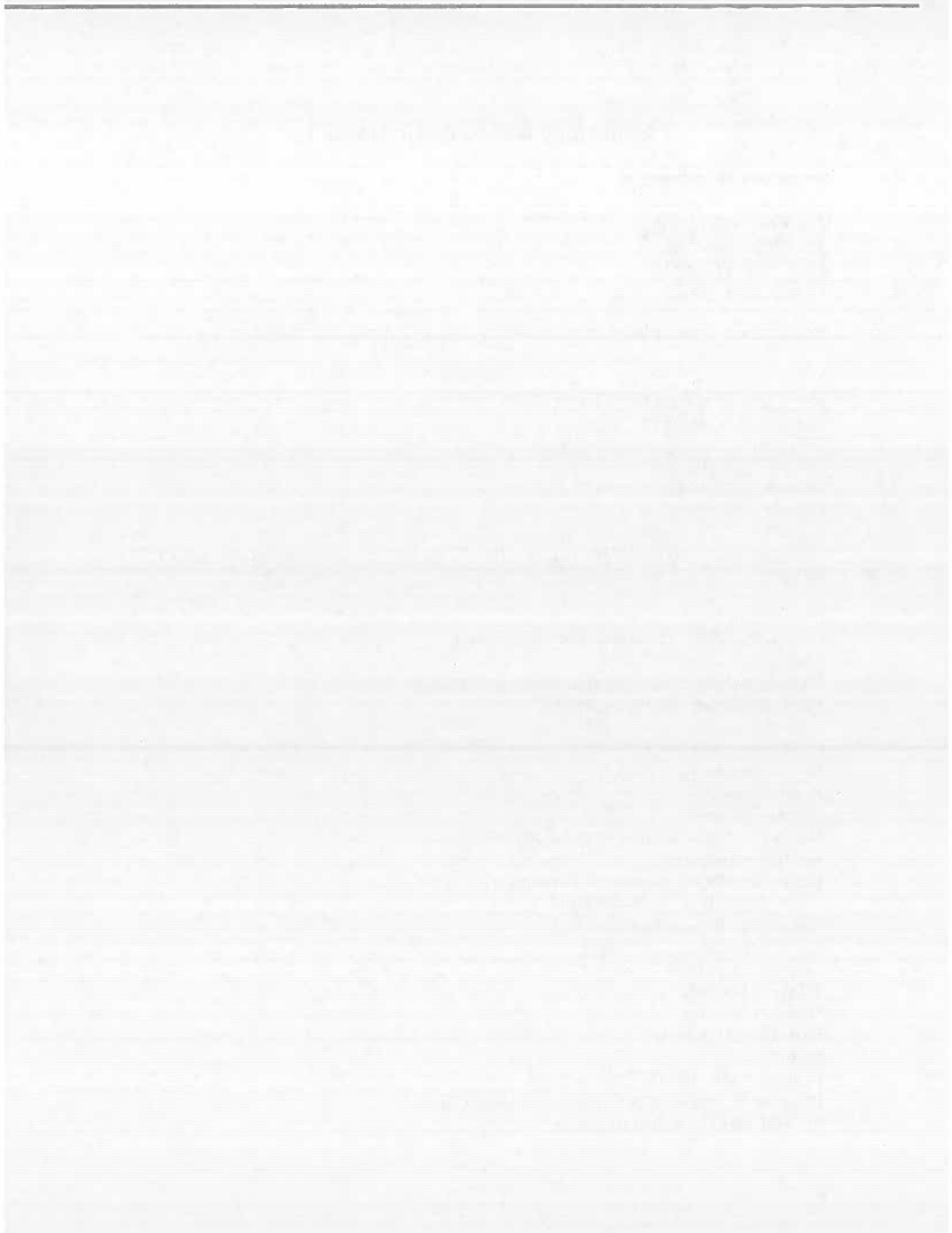
*Department of Health  
1250 Punchbowl St.  
Honolulu, HI. 96813  
Phone: 586 – 4533*

*Birth, Death, Delayed Birth Records with testimony, Divorce and Marriage certificates.*

*HAWAII STATE ARCHIVES (HSA)  
Hawai'i State Archives  
367 S. King St.  
ʻIolani Palace Grounds  
Honolulu, HI. 96813  
Phone: 586-0329*

This valuable collection is home to mostly 19<sup>th</sup> century government records which include:

Birth Records  
Census Records: 1840-1896; 1900; 1910; 1920  
Change of Names  
Chinese Bureau Enter and Return Permits Permits  
Chinese Minors and Women Entry  
Church Records  
Civil Cases  
Court Documents  
Death Records  
Divorce Records  
Hawaiian Born Children of Chinese Heritage  
Immigration Records  
Kalaupapa Death Register of Patients  
Kalaupapa Marriage Documents  
Kalaupapa Patient Register  
Land Records  
Marriage Records  
Military Records  
Oaths of Loyalty  
Passenger Manifests  
Photographs  
Probate Case Files (19<sup>th</sup> century)  
Register & Testimonies Land Commission Claims  
St. Andrews Cathedral Registers



**Tax Records (personal and real property)**

**Telephone and City Directories**

**Veterans Records**

**Vital Statistics - Indexes as reported in newspapers:**

**Births (1857-1945)**

**Marriages (1845-1945)**

**Obituaries (1844-June 1950), and may be found in some Hawaiian newspapers.**

**Records: Birth, Marriage, and death records for all islands, 1826-1910 (incomplete). Marriage record books before 1900 are books recorded by the missionaries**

**Voting Records**

**Hawaiian Genealogies:**

**These genealogy books contain traditional family oral genealogies that the names mentioned predate western contact:**

**Amalu**

**Char**

**Hakaleleponi**

**Haloa**

**Helekunihi**

**Huahuailani**

**Kaihilani**

**Kalakaua**

**Kamehameha**

**Kao`o**

**Kapa`akea & Keohokalole**

**Kapohaialii**

**Keaweheulu**

**Kepookulou**

**Kipi**

**Kuhio**

**Kumuhonua & Wakea**

**Kumulae**

**Mahoe**

**Malo**

**Nanaulu**

**Pauahi**

**Peabody**

**Pratt**

**Queen Kapiolani**

**Stillman**

**Wilcox**



## SECONDARY RESOURCES:

### ***BISHOP MUSEUM ARCHIVES/LIBRARY***

*Bernice Pauahi Bishop Museum*

*1525 Bernice St.*

*Honolulu, HI. 96817*

*Phone: Archives 848-4182*

*Phone: Library 848-4148*

The Archives/Library has a collection of genealogy manuscripts that includes some Hawaiian royalty, as well as others, indexed by name, personal letters, journals, diaries, photographs and employments records.

There is a fee for copying, prices subject to change, please call for current price schedule.

### ***BUREAU OF CONVEYANCES***

*Bureau of Conveyances*

*1151 Punchbowl St.*

*Honolulu, HI. 96813*

*Phone: 587-0147*

The Bureau's Grantee/Grantor Indexes might provide important family genealogies and deeds of adoption which date back to 1845. Listed will be the book (*Liber*) and page of the recorded incident, many of which might be in the Hawaiian language. It is important for the researcher to know important family dates (i.e. births, marriages, death, divorces, adoptions, purchase of property, etc.)

Reading Material: Midkiff Learning Center: Hawai'i/Pacific Collection.

H 346.0438 Er-4t Erickson, Jackie Mahi Title searching for the non-professional.

### ***CHURCH OF JESUS CHRIST OF LATTER-DAY SAINTS, THE***

The Church of Jesus Christ of Latter-Day Saints, has several Family History Centers through -out the state. Each center is manned by a staff of volunteers who, from time to time conduct genealogy workshops through out the year. Please check with the nearest center for hours of service. You do NOT have to be a *Mormon* to gain access to the history centers, just the desire to do genealogy research.

Available on microfilm are Archives' records from 1823-1858, burial records, Cemetery directories (O'ahu, Maui, Moloka'i, Lana'i, etc.) Church Baptismals, Dept. of Health records from 1834-1909, 1910 to May 1925, Divorce records, Immigration, journals, marriages, probates, and Voter Registration records.





*Honolulu Family History Center*  
*1560 S. Beretania St.*  
*Honolulu, HI. 96826 Phone: 955-8910*

*Kalihi family History Center*  
*1723 Beckley St.*  
*Honolulu, HI. 96819 Phone: 845-9701*

*Kane`ohe Family History*  
*46-117 Halaulani St.*  
*Kane`ohe, HI. 96744 Phone: 247-3134*

*Lai`e Family History Center*  
*55-600A Naniloa Loop*  
*Lai`e, HI. 96762 Phone: 293-2133*

*Makakilo Family History Center*  
*92-900 Makakilo Drive*  
*Kapolei, HI. 96707 Phone: 672-5970*

*Mililani Family History Center*  
*95-1039 Meheula Parkway*  
*Mililani, HI. 96789 Phone: 623-1712*

*Waipahu Family History Center*  
*94-210 Kahuai`i St.*  
*Waipahu, HI. 96797 Phone: 678-0752*

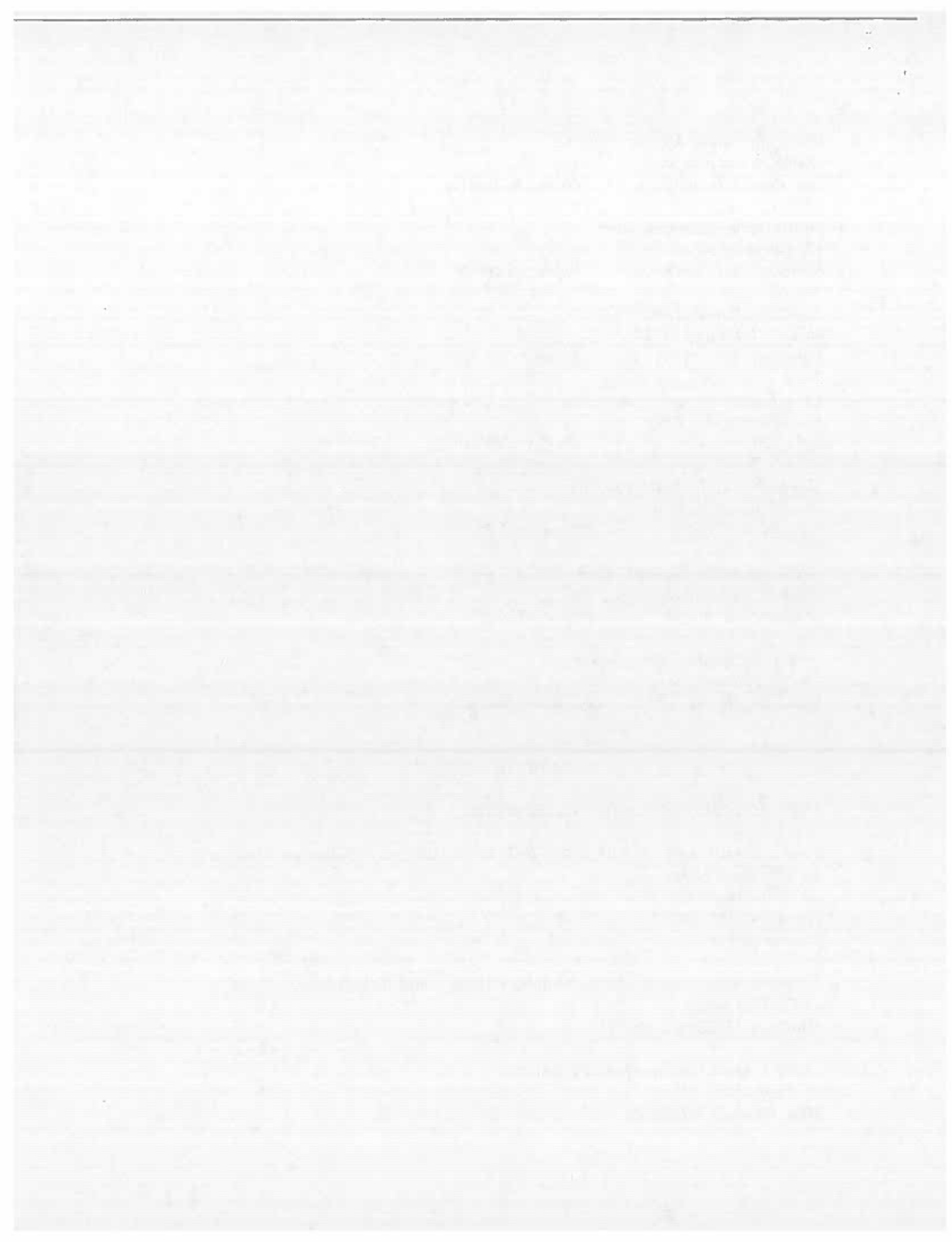
### **CIRCUIT COURTS**

The State of Hawai`i has four circuit courts:

**First Circuit Court – O`ahu which includes the district of Kalawao, Moloka`i.**  
*Ka`ahumanu Hale*  
*777 Punchbowl St.*  
*Honolulu, HI. 96813*  
*Phone: 539-4767*

**Second Circuit Court – Maui, Moloka`i, Lana`i, and Kaho`olawe.**  
*2145 Main Street*  
*Wailuku, Maui, HI. 96793*

**Third Circuit Court – Hawai`i island.**  
*75 Aupuni St*  
*Hilo, Hawai`i, HI. 96720*



Fifth Circuit Court – Kaua'i and Ni'ihau islands.  
4280-A Rice St., Bldg B  
Lihue, Kaua'i, HI. 96766

There is no Fourth circuit.

#### *DAUGHTERS OF THE AMERICAN REVOLUTION*

This library is located in the basement of a private residence. Hours vary, call before you visit or call to schedule an appointment. The collection contains genealogies of colonial Americans shelved according to state. Some Hawaiian genealogies.

*Daughters of the American Revolution Library*  
1914 Makiki Heights Dr.  
Honolulu, HI. 96822  
Phone: 949-7456

#### *HAWAII STATE LIBRARY/HAWAII-PACIFIC COLLECTION*

*Hawai'i State Library/Hawai'i and Pacific Collection*  
478 S. King St.  
Honolulu, HI. 96813  
Phone: Library 586-3500  
Phone: Hawai'i and Pacific 586-3535

*The Hawai'i-Pacific Collection houses selected genealogies of many missionary and local families. Check the card catalog for family names.*

*On microfilm are the Births, Marriages and Death indexes and copies of the original birth, marriage and death certificates to May 1925. Check with staff for copy machine price change.*

*Also included:*

#### *Cemetery Directories*

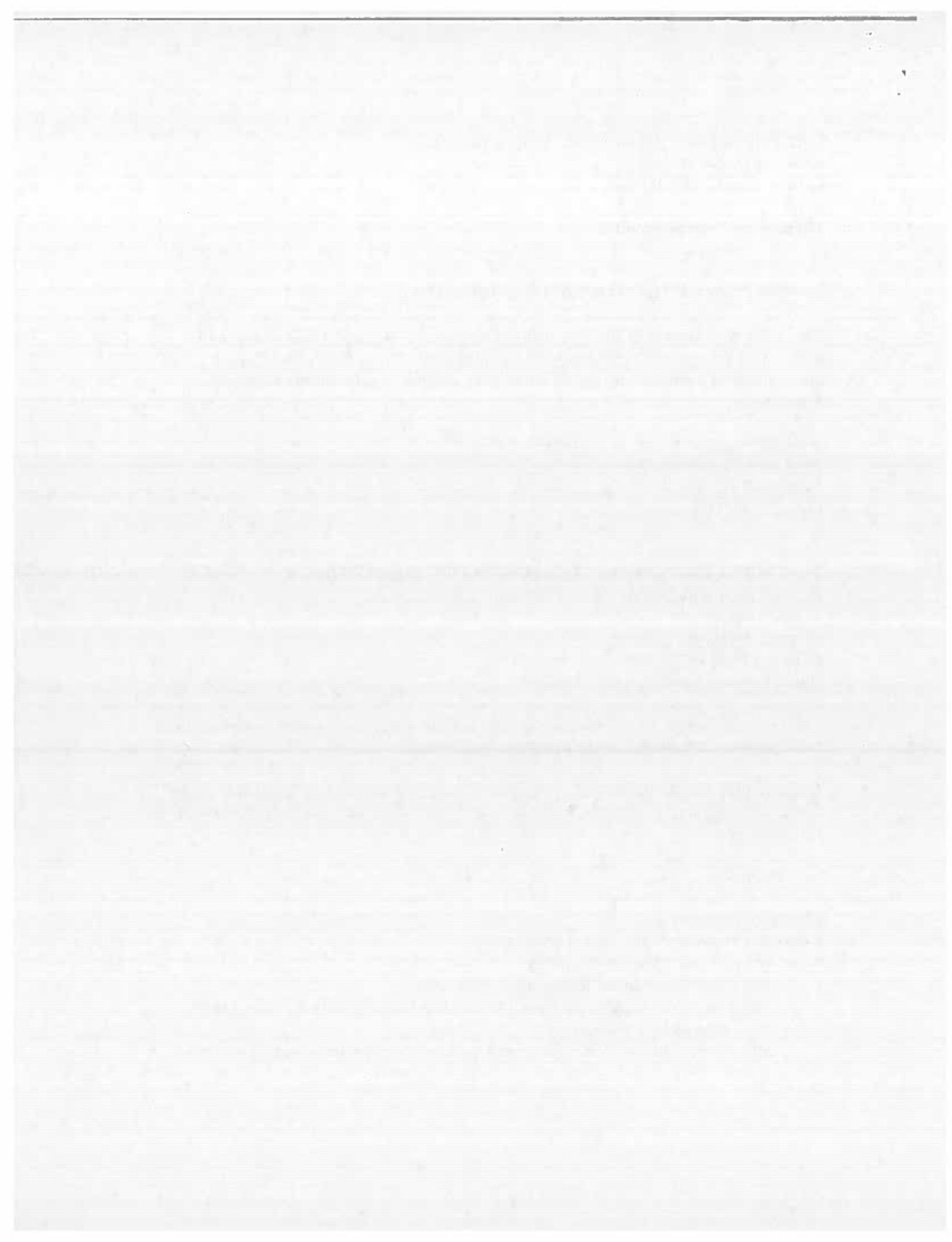
*Census of Hawaii: 1900, 1910, 1920 & 1930.*

*Dept. of Land and Natural Resources:*

*(a) Land Court Index to land title, 1986-1989*

*(b) Grantee & Grantor Indexes 1986 to date (earlier dates are found in the Bureau of Conveyances)*

*(c) Native and Foreign register and testimony and land commissions patents.*



***Ethnic Studies Oral History Project:***

*The 1924 Filipino Strike on Kauai*

*Five Life Histories*

*Life Histories of Native Hawaiians*

*Remembering Kakaako: 1910-1950*

*Social History of Kona*

*Stores and Storekeepers of Paia and Puunene, Maui*

*Waipi`o: Mano Wai (Source of Life)*

*Waialua-Haleiwa vols. 1-5)*

*Waikiki, 3 vols.*

*Women Workers in Hawaii's Pineapple Industry.*

*Indexes to passenger manifests on microfilm for Chinese, Japanese, Portuguese and various other ethnic groups.*

*Indices of awards made by the Board of Commissioners to Quiet Land Titles 1929.*

***KAMEHAMEHA SCHOOLS KAPĀLAMA HIGH SCHOOL***

*Ka Hale Ho'ona'auao 'o Mikikipi (Midkiff Learning Center)*

*249 Konia Circle*

*Honolulu, HI. 96817*

**ARCHIVES**

*Ka Waihona Palapala o Nā Kula 'o Kamehameha*

*Archivist, Janet Zisk*

*Phone: 842-8945*

*The history of the Kamehameha Schools is preserved here in the form of school annual reports, artifacts, memorabilia, newspapers, oral history interviews, programs, scrapbooks, and yearbooks. The early Polynesian Voyaging Society materials are also housed here. The Photographic Archives is adjacent to this collection.*

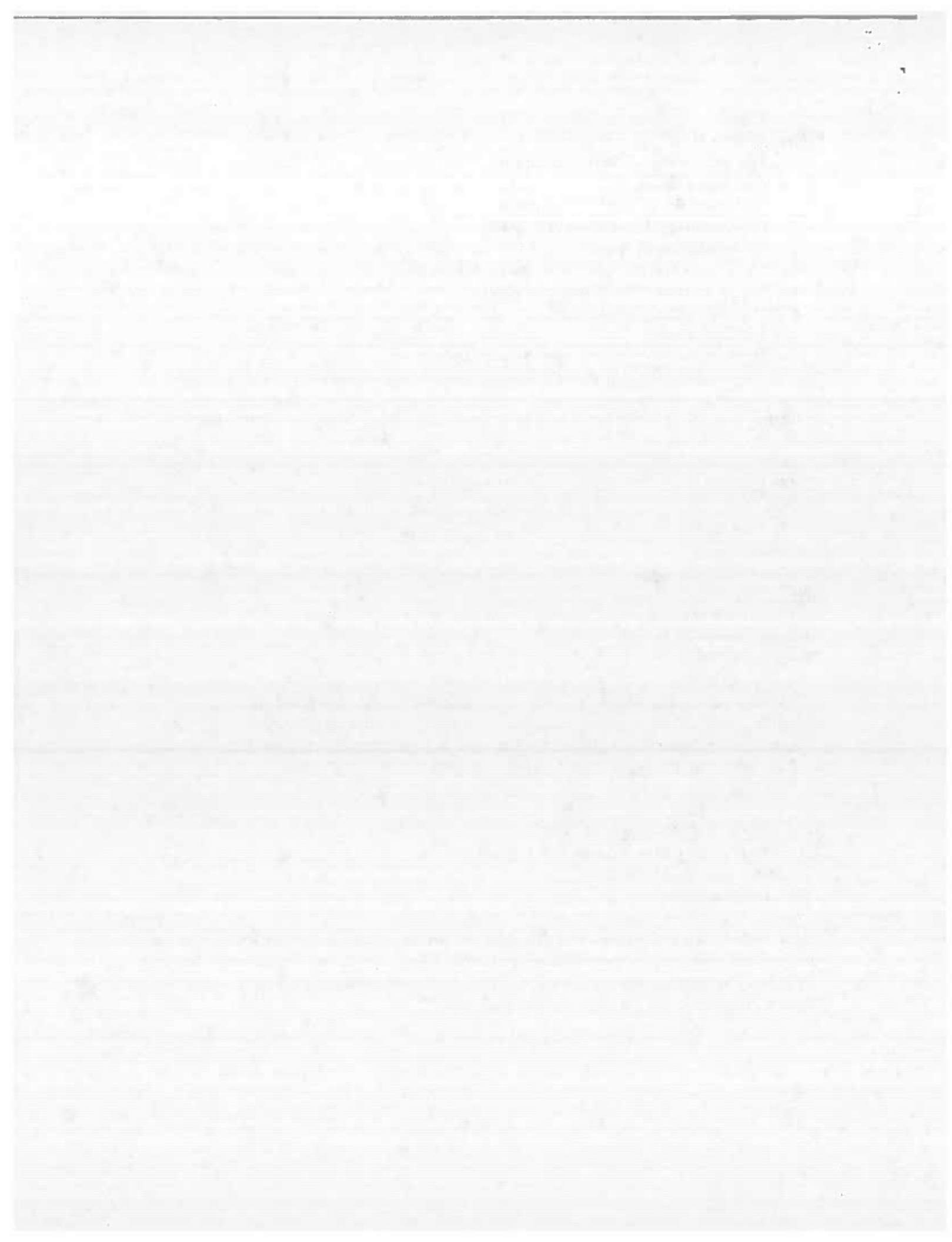
**HAWAII/PACIFIC COLLECTION**

*Ka Waihona 'ike o Hawai'i a me ka Pakipika*

*Librarian, Kawika Makanani*

*Phone: 842-8951*

*"Materials in this collection cover Hawai'i and the Pacific area and are organized into three circulation groups: circulating, controlled access, and a rare book vault. This is a full library-within-the library, which includes audiovisual materials, charts, maps, oral history interviews, pamphlets, artifacts and realia."*



## *INTERNET LINKS*

Go to <http://www.google.com> and type in Hawaiian genealogy, you will instantly have access to at least 10 pages of Hawaiian genealogy links.

*Revised by D. Gardner 1/29/10*

