

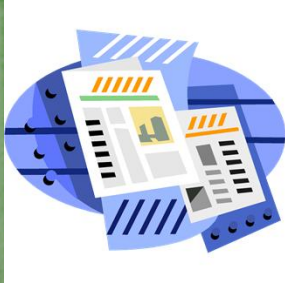
KAMEHAMEHA SCHOOLS KAPĀLAMA HIGH SCHOOL HAWAIIAN LANGUAGE PROFICIENCY

ISSUE NO. 2

OCTOBER 2014



Photo Credit: D. Kale Kau'i



[blogs.ksbe.edu/
hawaiianlanguage
proficiency](http://blogs.ksbe.edu/hawaiianlanguageproficiency)

Languages Department Head
Kaimana Kong
Email: kakong@ksbe.edu

Proficiency Skill Areas

Listening, Reading, Speaking, and Writing skill areas are based on American Council on the Teaching of Foreign Languages (ACTFL) Novice Mid-Level

Below are some excerpts from the NCSSFL-ACTFL Can-Do Statements

These statements should provide you with an idea of what a student should be able to do at the Novice Mid-Level. It does not mean that this is exactly what is on the Hawaiian Language Proficiency Assessment.

INTERPRETIVE LISTENING

"I can communicate on very familiar topics using a variety of words and phrases that I have practiced and memorized."

Examples of Can-Do Statements:

- * I can understand courtesy phrases.
- * I can recognize and sometimes understand information in words or phrases that I have memorized.
- * I can recognize and sometimes understand words and phrases that I have learned for specific purposes.

INTERPRETIVE READING

"I can recognize some letters or characters. I can understand some learned or memorized words and phrases when I read."

Examples of Can-Do Statements:

- * I can recognize words, phrases, and characters with the help of visuals.
- * I can recognize words, phrases, and characters when I associate them with things I already know.

2014-2015 Assessment Dates

October 2014

Listening, Reading, Speaking, Writing

November 2014

Listening & Reading

January 2015

Speaking

February 2015

Listening, Reading, Speaking Writing

April 2015

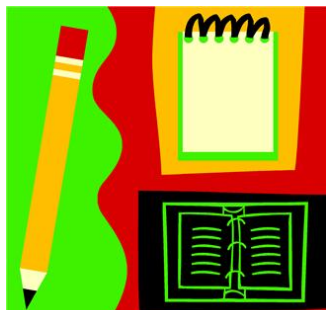
HAWAIIAN 1 TESTING

*In students' scheduled Hawaiian 1 class period

Listening, Reading, Speaking, Writing

Please check daily bulletin for test announcements as well as our blog site:

[blogs.ksbe.edu/
hawaiianlanguage
proficiency](http://blogs.ksbe.edu/hawaiianlanguageproficiency)



Proficiency Skill Areas Continued

Listening, Reading, Speaking, and Writing skill areas are based on American Council on the Teaching of Foreign Languages (ACTFL) Novice Mid-Level

Below are some excerpts from the NCSSFL-ACTFL Can-Do Statements

SPEAKING

INTERPERSONAL COMMUNICATION (Interview Q&A)

"I can communicate on very familiar topics using a variety of words and phrases that I have practiced and memorized."

Examples of Can-Do Statements:

- * I can greet and leave people in a polite way.
- * I can introduce myself and others.
- * I can ask a variety of simple questions?
- * I can make some simple statements in a conversation.
- * I can ask some simple questions.
- * I can communicate basic information about myself and people I know.
- * I can communicate some information about my everyday life.

PRESENTATIONAL SPEAKING

"I can present information about myself and some other very familiar topics using a variety of words, phrases, and memorized expressions."

Examples of Can-Do Statements:

- * I can present information about myself and others using words and phrases.
- * I can express my likes and dislikes using words, phrases, and memorized expressions.
- * I can present information about familiar items in my immediate environment.
- * I can talk about my daily activities using words, phrases, and memorized expressions.
- * I can present simple information about something I learned using words, phrases, and memorized expressions.

PRESENTATIONAL WRITING

"I can write lists and memorized phrases on familiar topics."

Examples of Can-Do Statements:

- * I can fill out a form with some basic personal information.
- * I can write about myself using learned phrases and memorized expressions.
- * I can list my daily activities and write lists that help me in my day-to-day life.
- * I can write notes about something I learned using lists, phrases, and memorized expressions.