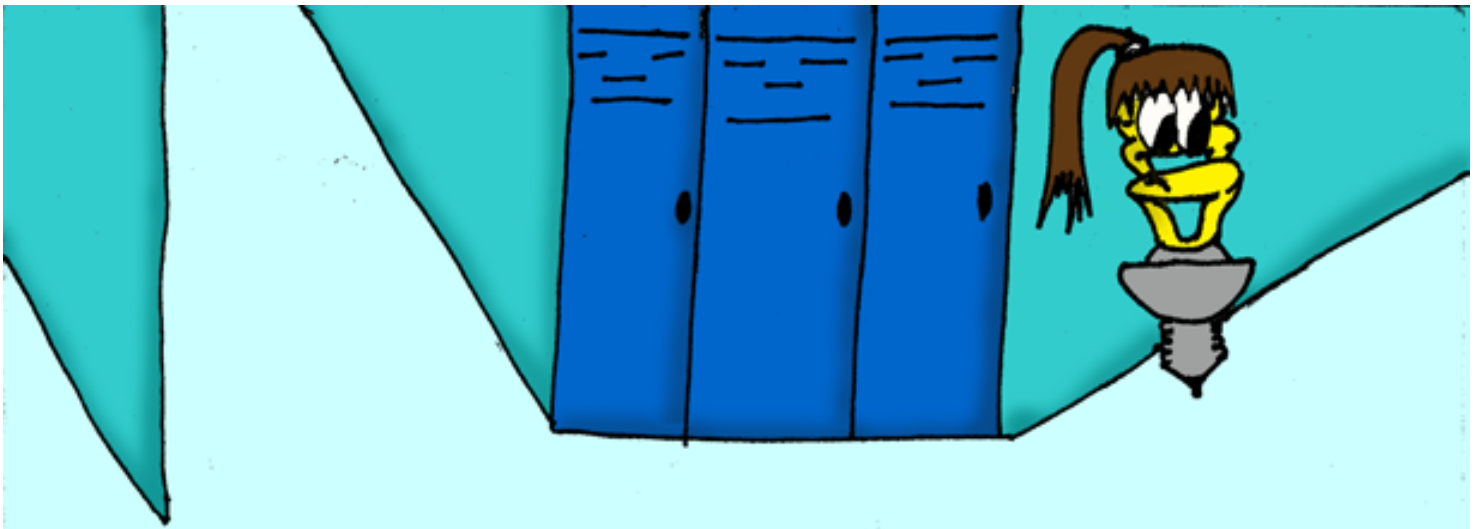




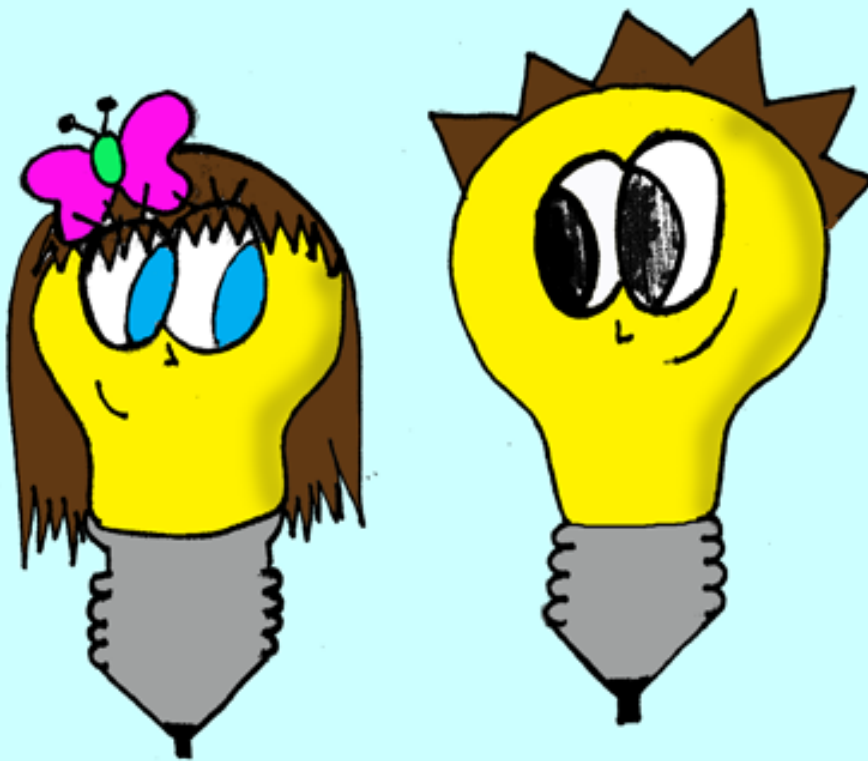
The Luminous Light Bulb

By: Alexis Kyle

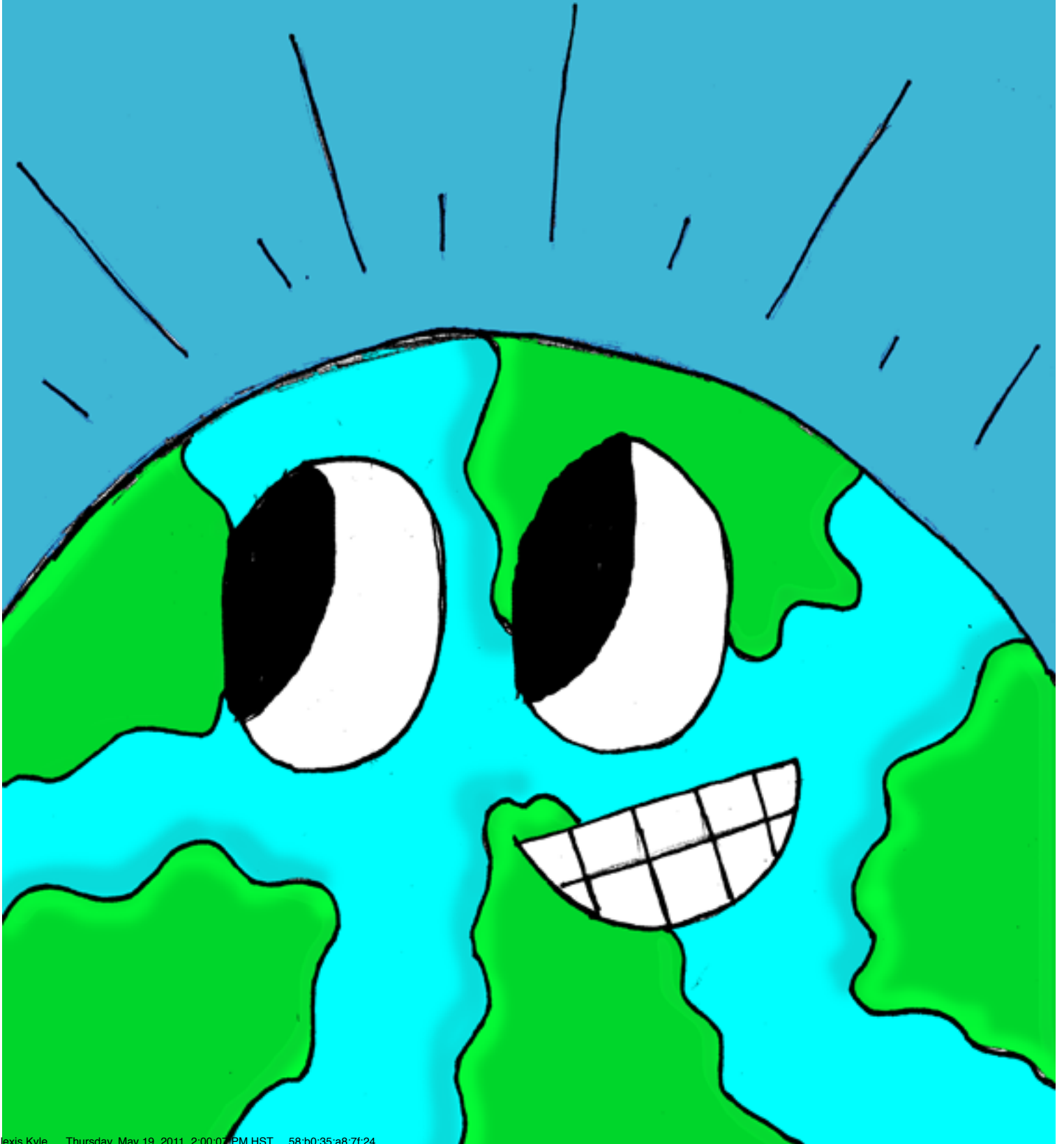


Lucy was a light bulb that didn't fit in with any other light bulbs because of how she looked. The other light bulbs thought she was weird because she stood out among all the others. She wasn't the typical light bulb that you would see everyday.

Well, Lucy wouldn't fit in with anyone so she would get teased a lot and she had no friends.



Environmentally friendly light bulb, a CFL. CFL's are good for the environment because they produce less CO₂, which means less CO₂ gets put into the atmosphere.



mentally friendly. They are regular light bulbs, that produce more CO₂. When there is too much CO₂ that is put into the atmosphere. It causes global warming. Global warming is when there is too much CO₂ that is adding up in the o-zone layer. When it adds up, the o-zone layer gets thicker and thicker. Which means there is less heat that gets released into the atmosphere, making the earth hot.





When she went to school the next morning there were all flyers posted around school, with the star light bulb of the school.

Everyone thought that it was going to Lauren, the past star light bulb of the year, but it wasn't. Lucy was chosen among all the other light bulbs because she was a CFL light bulb, which means she helps to save the environment.





CFL's help to keep the earth happy because they give off less CO2. But those regular light bulbs hurt the earth because they give off more CO2, which hurts the earth.