

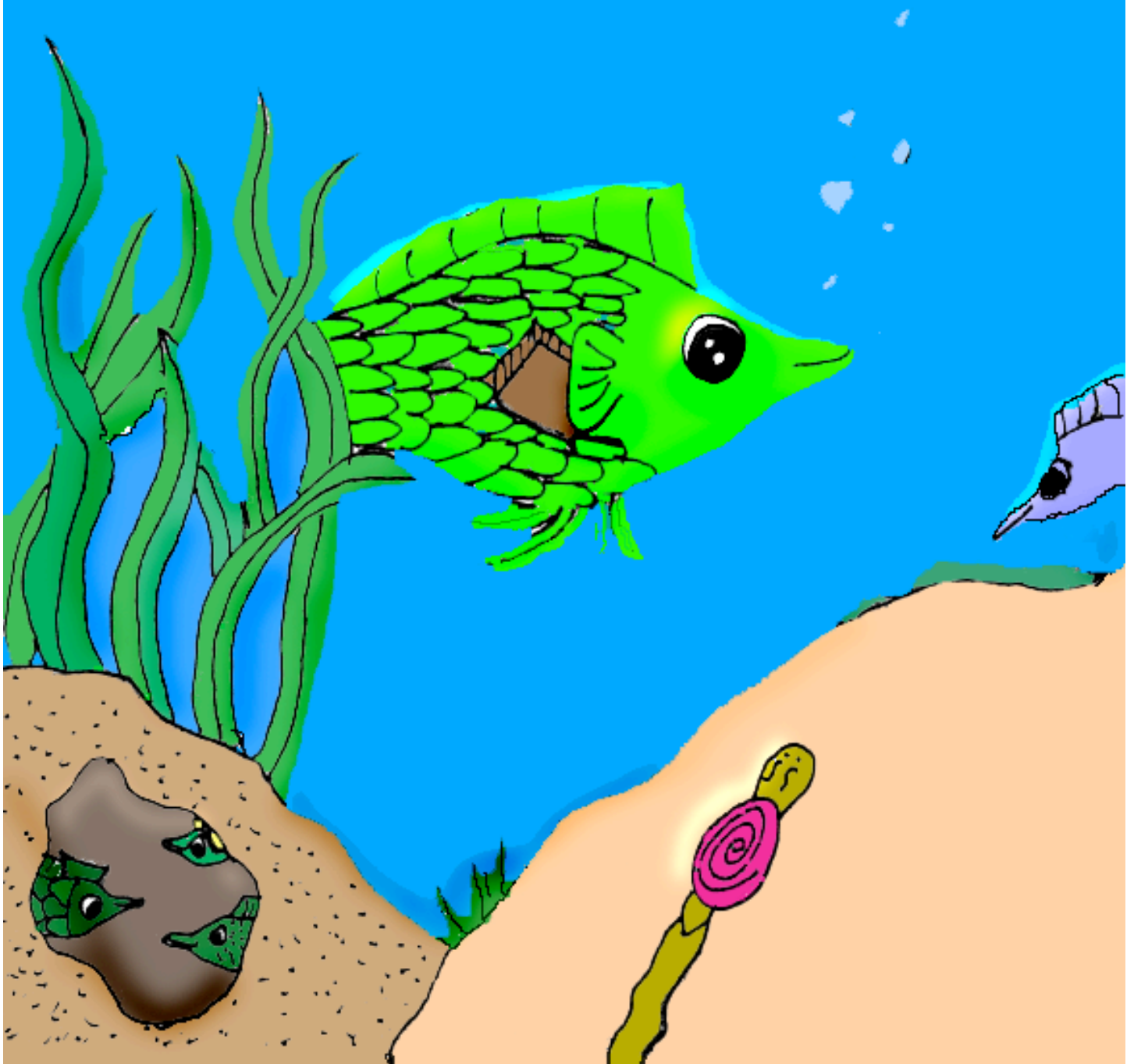


Ray's Great Diary

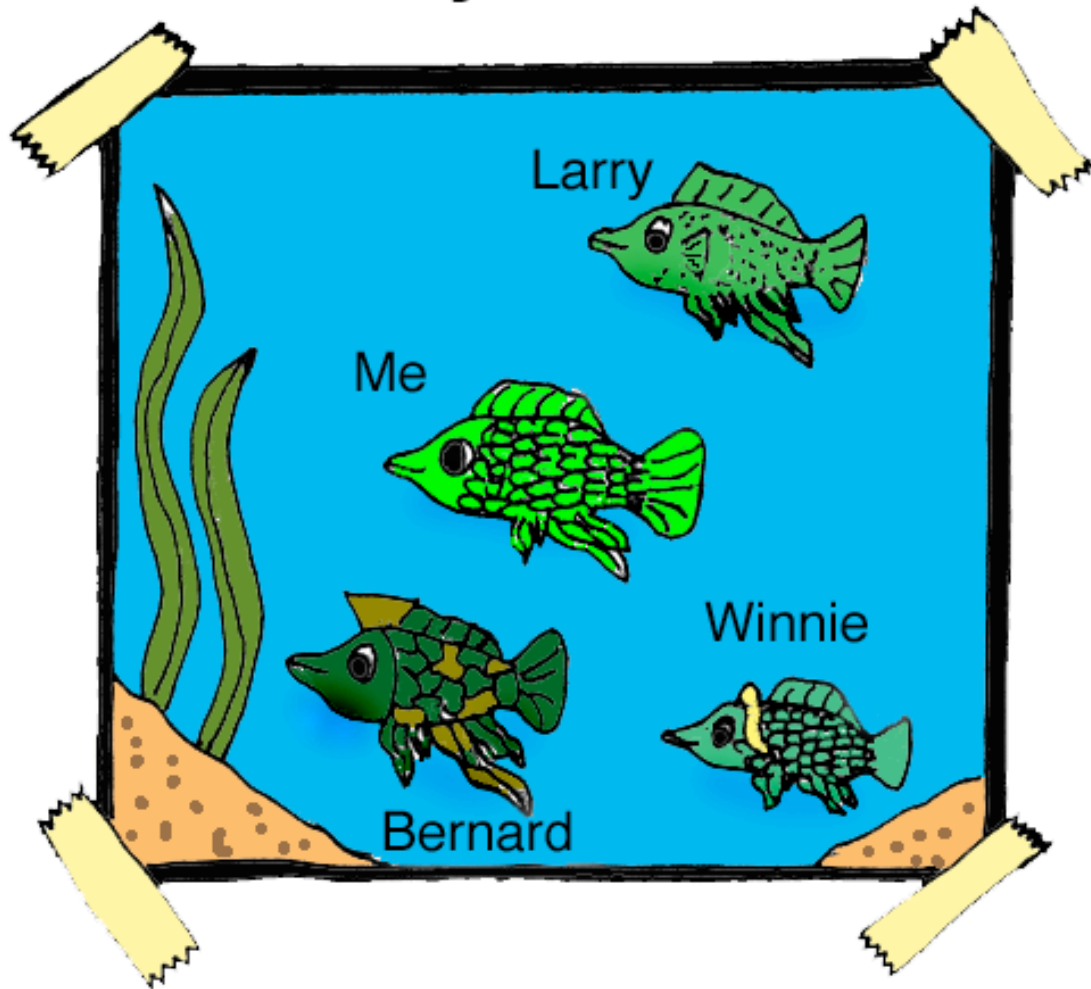
Story and Illustrations by
Pono Sukanuma

Ray's Great Diary

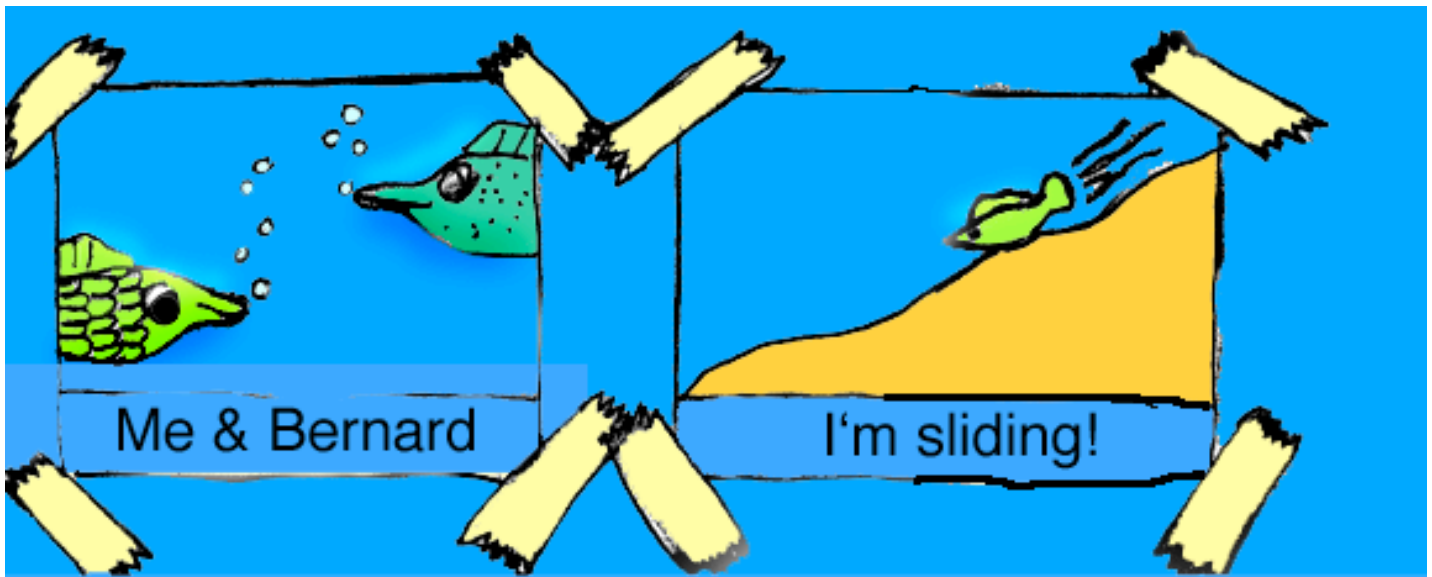
Story and Illustrations by
Pono Suganuma



Wednesday, Feb. 11



This is my family, and as you can see I am the cool one in the middle. We are all Sailfin Mollies (that is what fish we are), and we live in the Moanalua stream where there is plenty of plants, and algae yum!

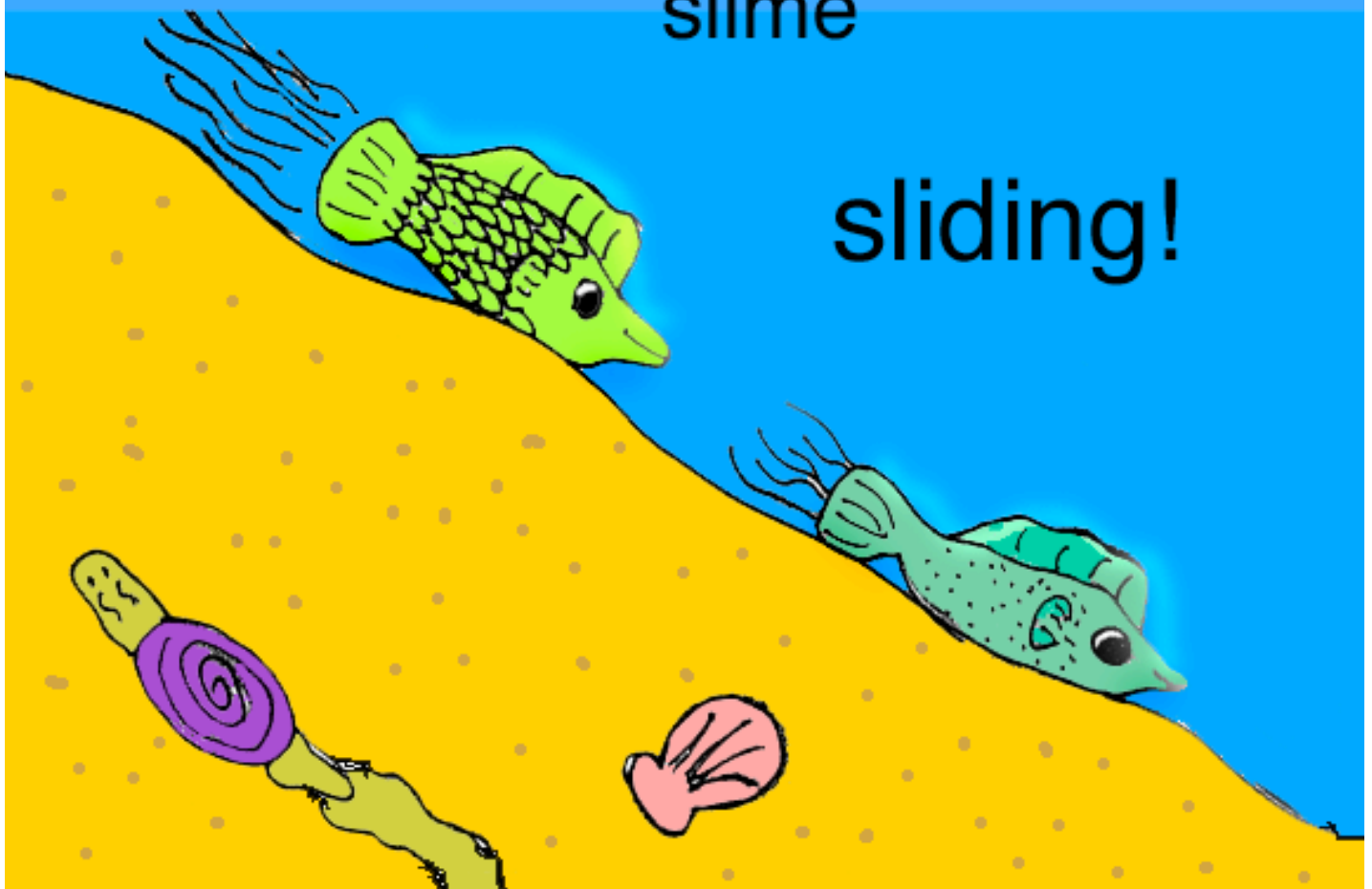


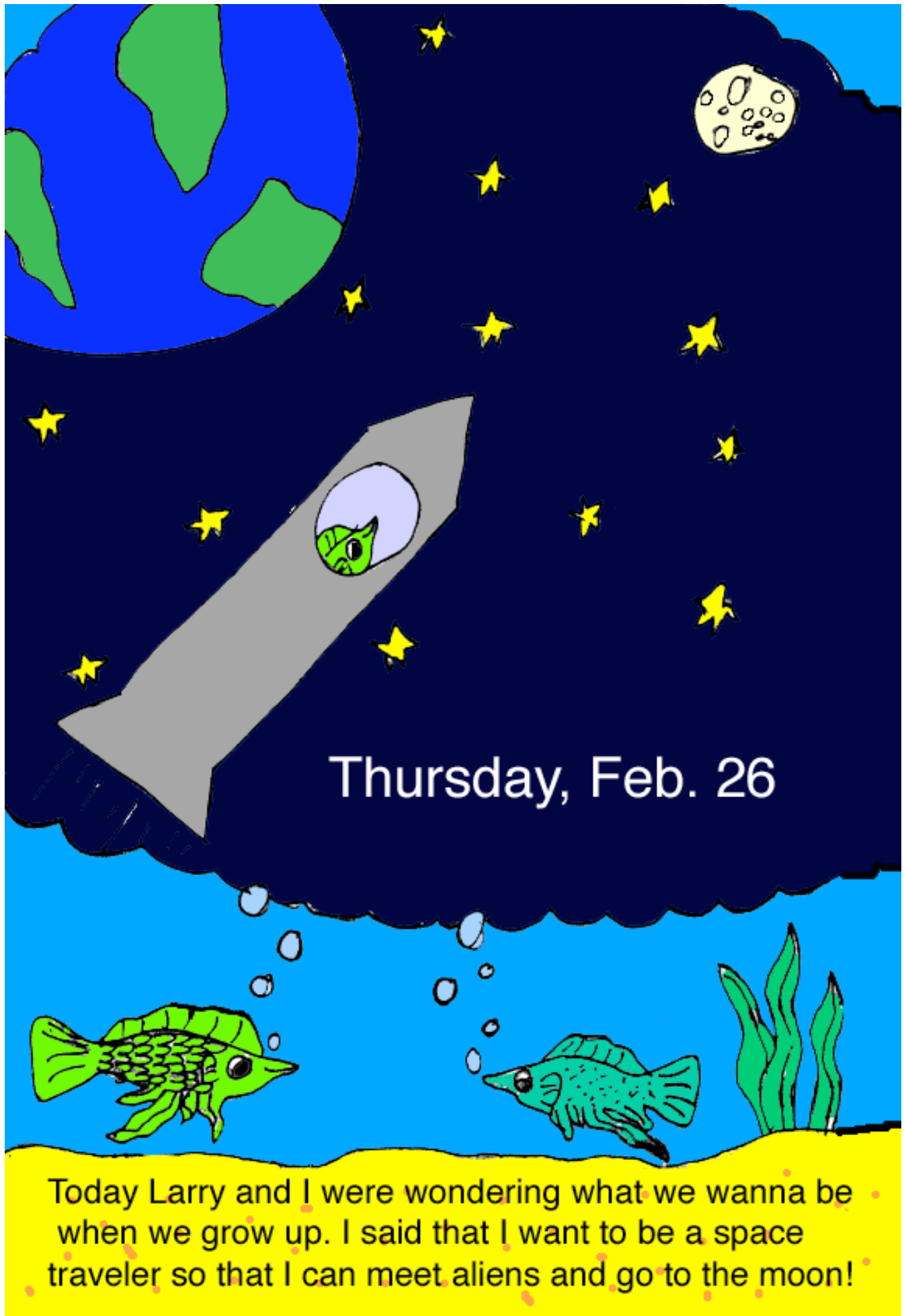
Friday, Feb. 20

Today Larry and I are
going to go snail

slime

sliding!





Thursday, Feb. 26

Today Larry and I were wondering what we wanna be when we grow up. I said that I want to be a space traveler so that I can meet aliens and go to the moon!



Ray Sail	Grades
Surviving	B-
Diet	C-
Family	A
Fin Care	B+
Height	B-
Overall Grade	B-




Ooohhhh my report card came in the mail. I got a B-, B for Boo. Ah man.





Friday, March 6

My whole family is trying to cheer me up but I am just too sad. I will never be the same again.



Last night I had a dream
about my parents. and
they said that it is all
right and I will do
better. I feel happy now.
I can't wait to hang out
with my family.



Saturday, Mar.7

