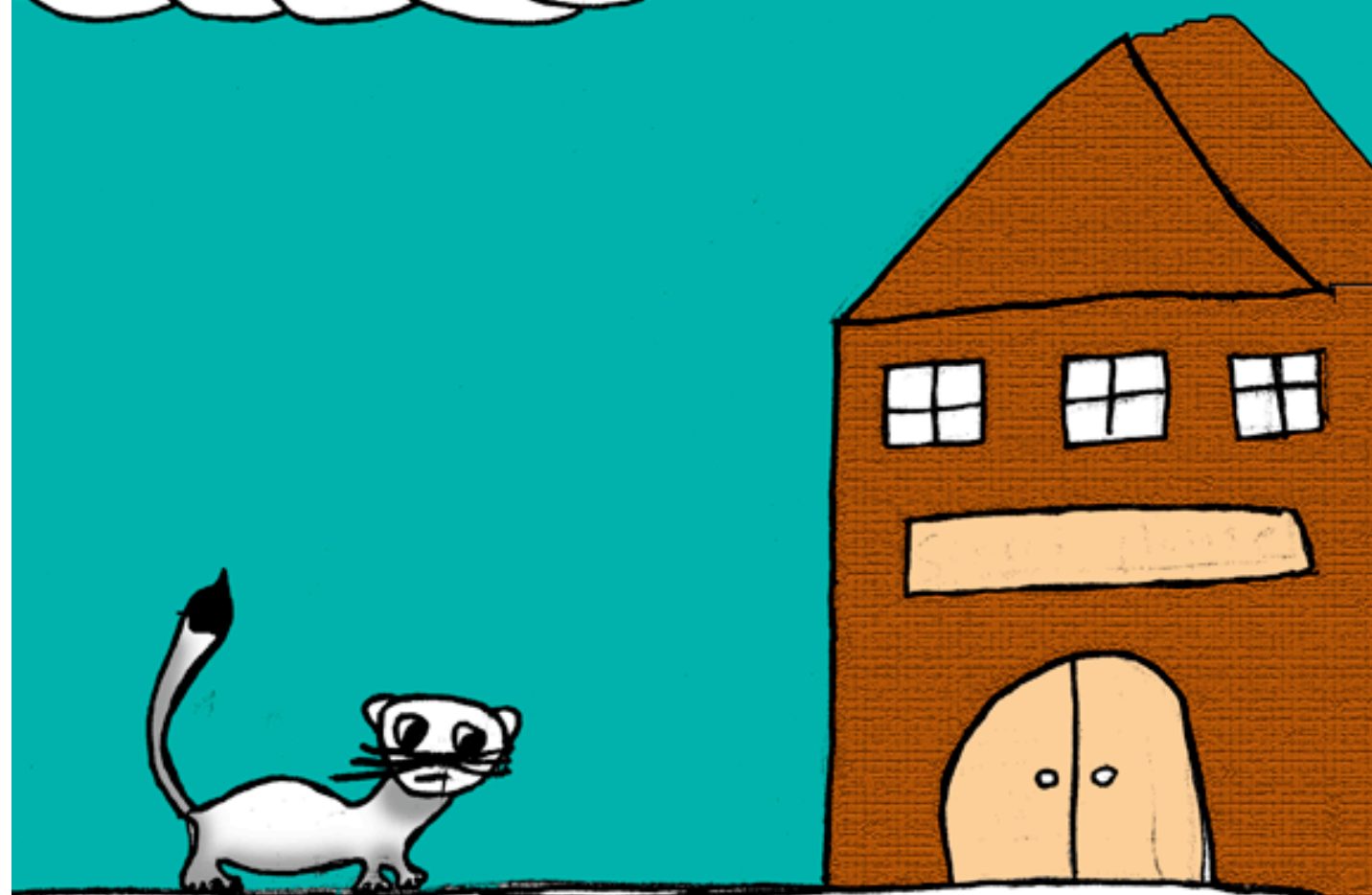


Ermela

goes to

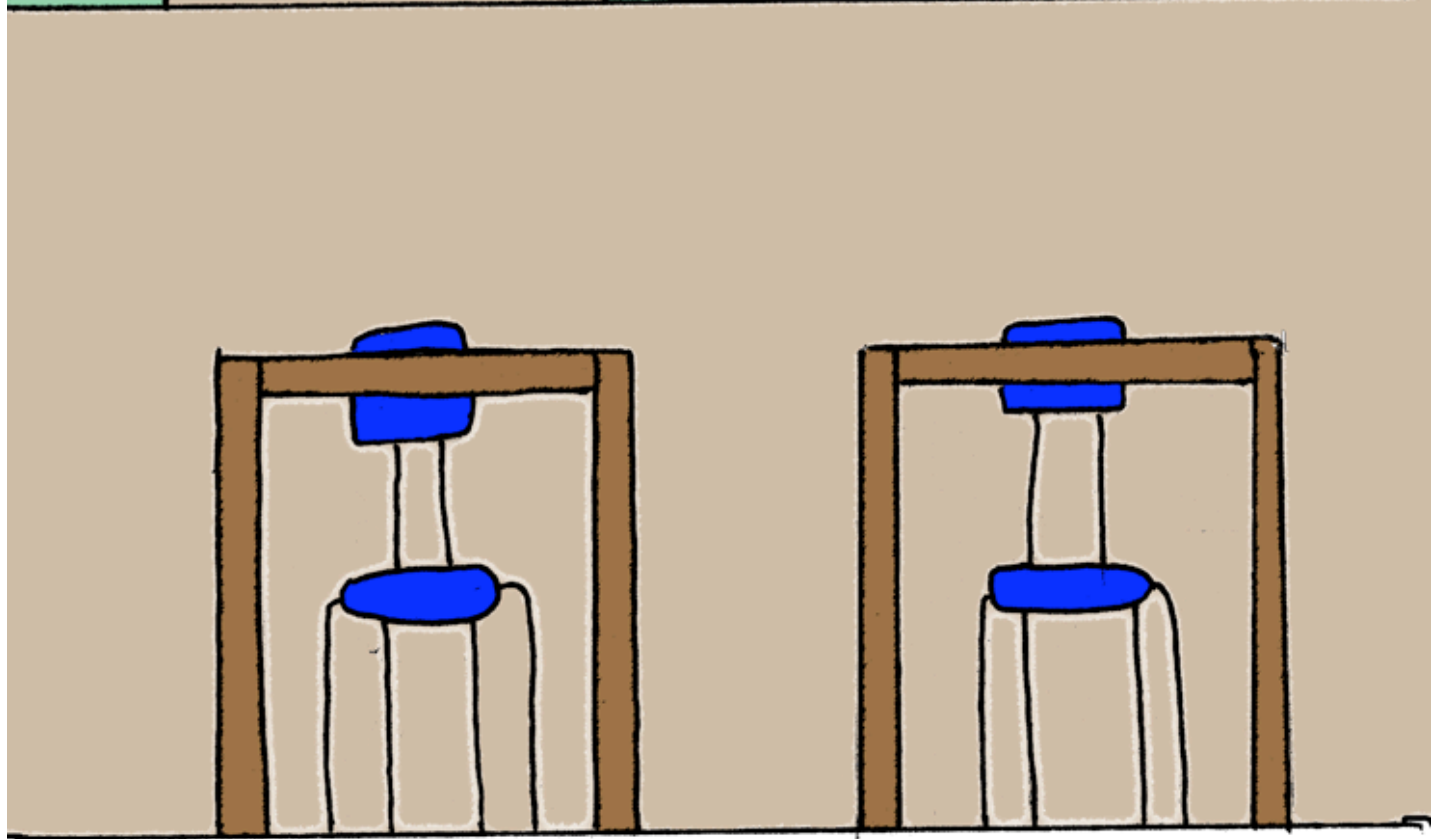
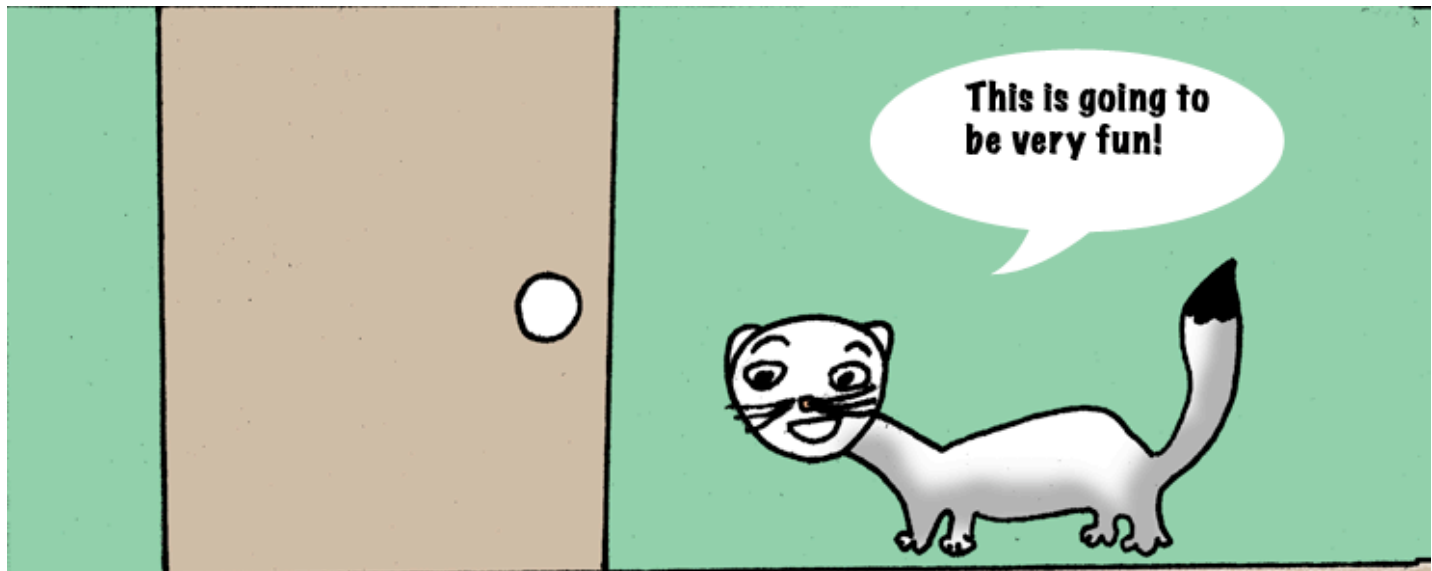
School



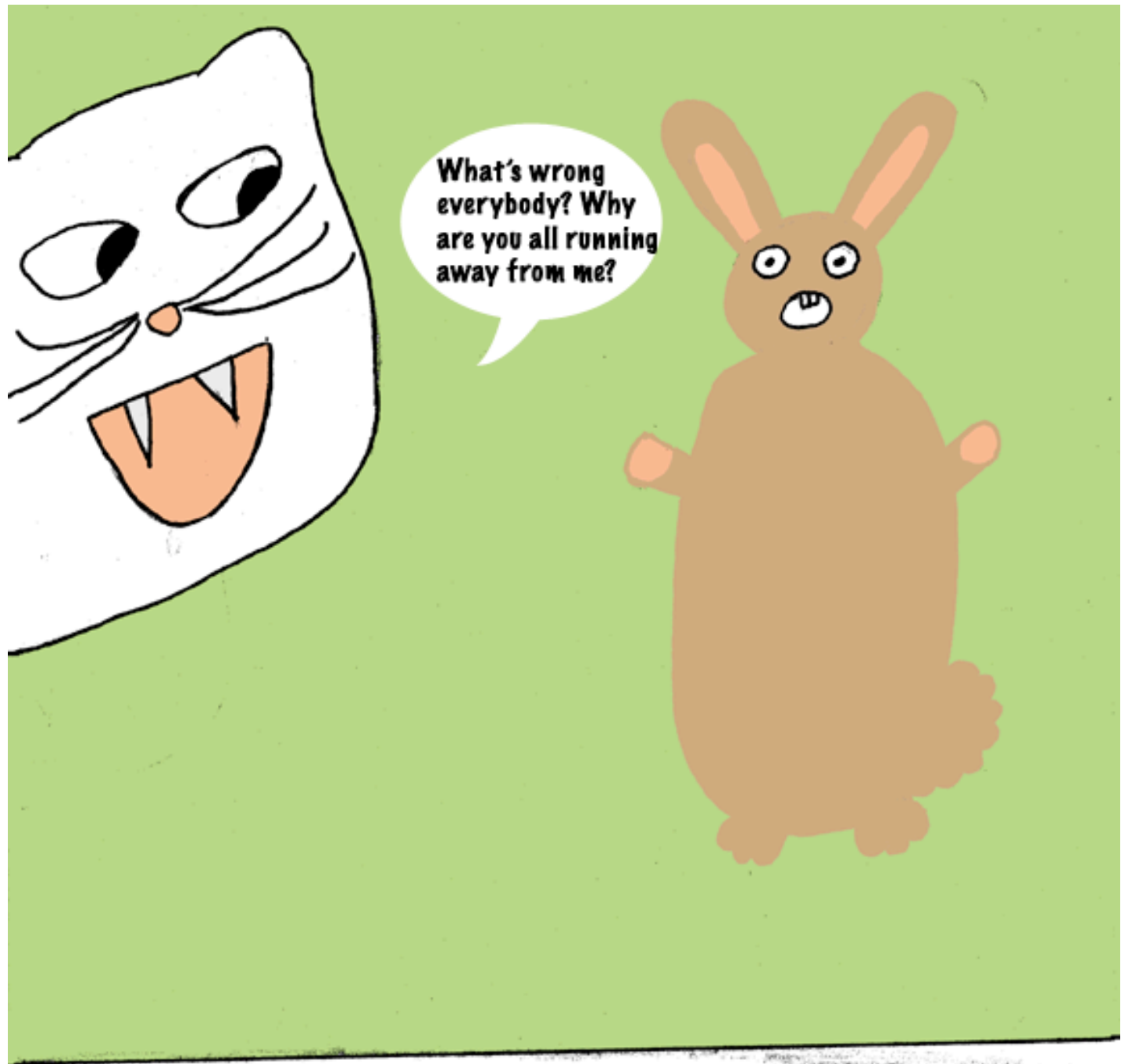
Author and illustrations by:  
Kierstin Kaaihue



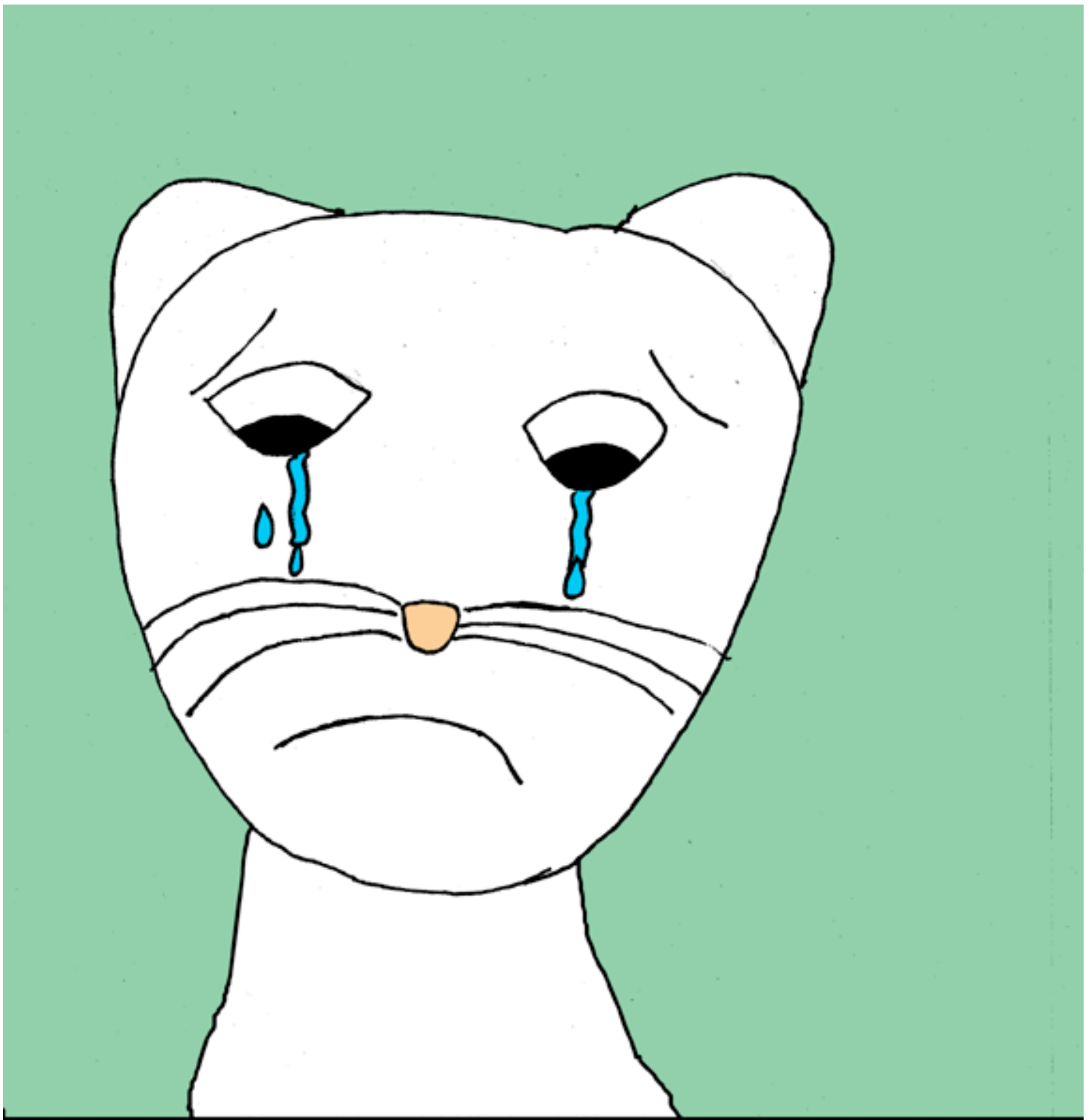
**Ermela is an Ermine who lives a big neighborhood called the Northern Hemisphere. Tomorrow is Ermela's first day of school, and she is very excited.**



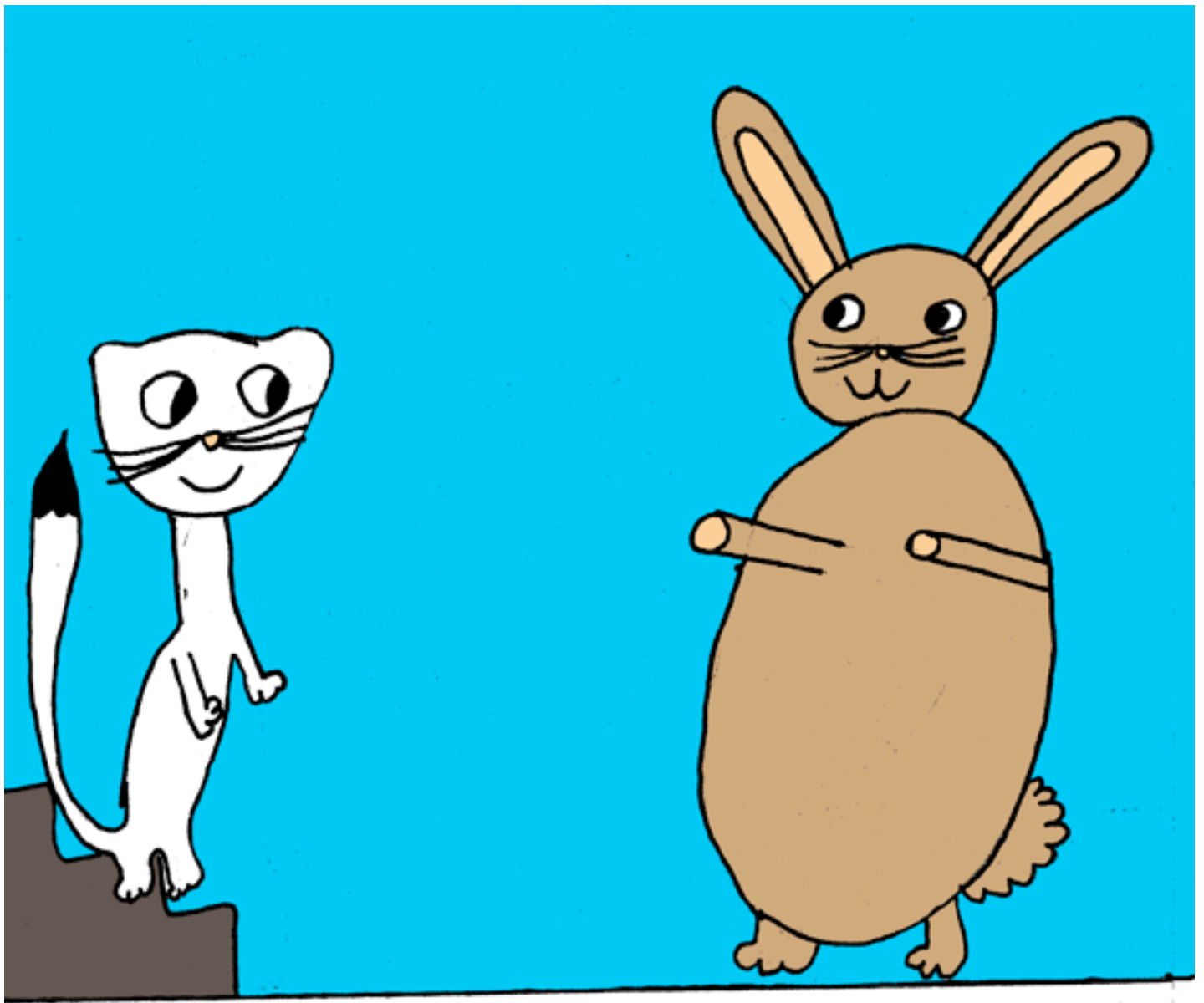
**When Ermela got to school, she saw all of the desks and books and was very excited to learn. She couldn't wait to make new friends, learn a lot, and explore the school. She was also hoping that here white winter coat would stay long enough so that she could show the others how here coat changes from orange and gray for fall, summer and spring, but turns white with a black -tipped tail for the winter.**



**In class that day, Ermela played a game that included smiling. When it was Ermela's turn and she smiled, everybody ran away from her. "What is wrong?" said Ermela, but everybody was too busy screaming and running.**



Ermela realized later that she had shown her teeth which had been long, sharp, and pointy. She spent the rest of the day alone and the next day too.



The next day, Bunbun realized that Ermela was a nice Ermine and that you shouldn't judge someone by how they look. Ermela and Bunbun later on best friends.